



2100 South Clearwater Drive
Des Plaines, IL 60018
Phone: 847-803-5000
Fax: 847-803-5454
www.chicagofaucets.com

FOR TECHNICAL ASSISTANCE
1-800-TEC-TRUE (1-800-832-8783)

ROUGH-IN

BY: SID DATE: 08-24-15
CHK: *AK* REV:

FITTING NO.

E38JKABCP

SUBMITTED MODEL NO.

SUBMITTED AS SHOWN

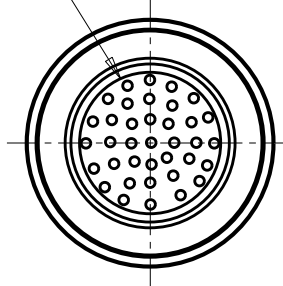
SUBMITTED AS NOTED

SEE ATTACHED FOR
SUBMITTED MODIFICATION

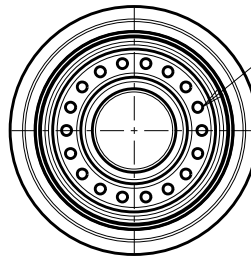
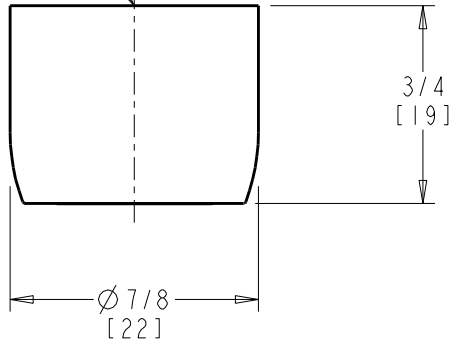
JOB NAME

ITEM NO.

INSERT: 0.35 GPM
DOME COLOR: WHITE



13/16-24 FEMALE INLET
FITS GROUP "A" SPOUTS



SPRAY PATTERN

DIMENSIONS ARE IN INCHES AND [MILLIMETERS].

TECHNICAL DATA

- NON-AERATING PRESSURE COMPENSATING SPRAY OUTLET
- 0.35 GPM [1.3 L/min.] MAXIMUM FLOW RATE
- FINISH: CHROME PLATE

- ASME A112.18.1/CSA B125.1 COMPLIANT

ROUGHING IN DIMENSIONS MAY VARY AND ARE SUBJECT TO CHANGE. NO RESPONSIBILITY IS ASSUMED FOR USE OF SUPERCEDED OR VOIDED DATA.