

CHICAGO FAUCETS
 a Geberit company

2100 South Clearwater Drive
 Des Plaines, IL 60018
 Phone: 847-803-5000
 Fax: 847-803-5454
 www.chicagofaucets.com

FOR TECHNICAL ASSISTANCE
 1-800-TEC-TRUE (1-800-832-8783)

ROUGH-IN

FITTING NO.

E2605-5JKABCP

BY: SID

DATE: 04-17-13

SUBMITTED MODEL NO.

CHK: *[Signature]*

REV:

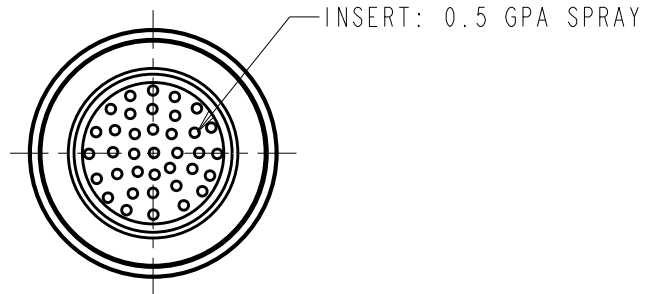
SUBMITTED AS SHOWN

SUBMITTED AS NOTED

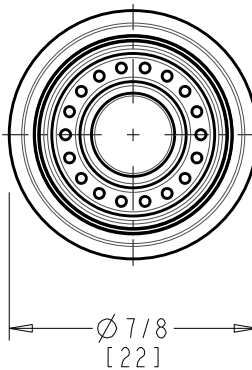
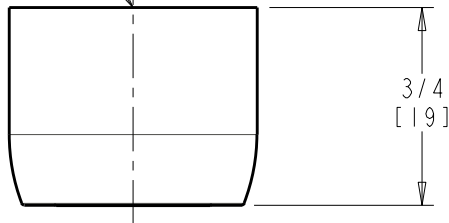
SEE ATTACHED FOR
 SUBMITTED MODIFICATION

JOB NAME

ITEM NO.



13/16-24
 FEMALE INLET



DIMENSIONS ARE IN INCHES AND [MILLIMETERS].

TECHNICAL DATA

- NON-AERATING SPRAY PRESSURE COMPENSATING ECONO-FLO OUTLET
- 0.5 GPM [1.9 L/min.] MAXIMUM FLOW RATE
- FINISH: CHROME PLATE

- ASME A112.18.1/CSA B125.1 COMPLIANT

ROUGHING IN DIMENSIONS MAY VARY AND ARE SUBJECT TO CHANGE. NO RESPONSIBILITY IS ASSUMED FOR USE OF SUPERCEDED OR VOIDED DATA.