



a Geberit company

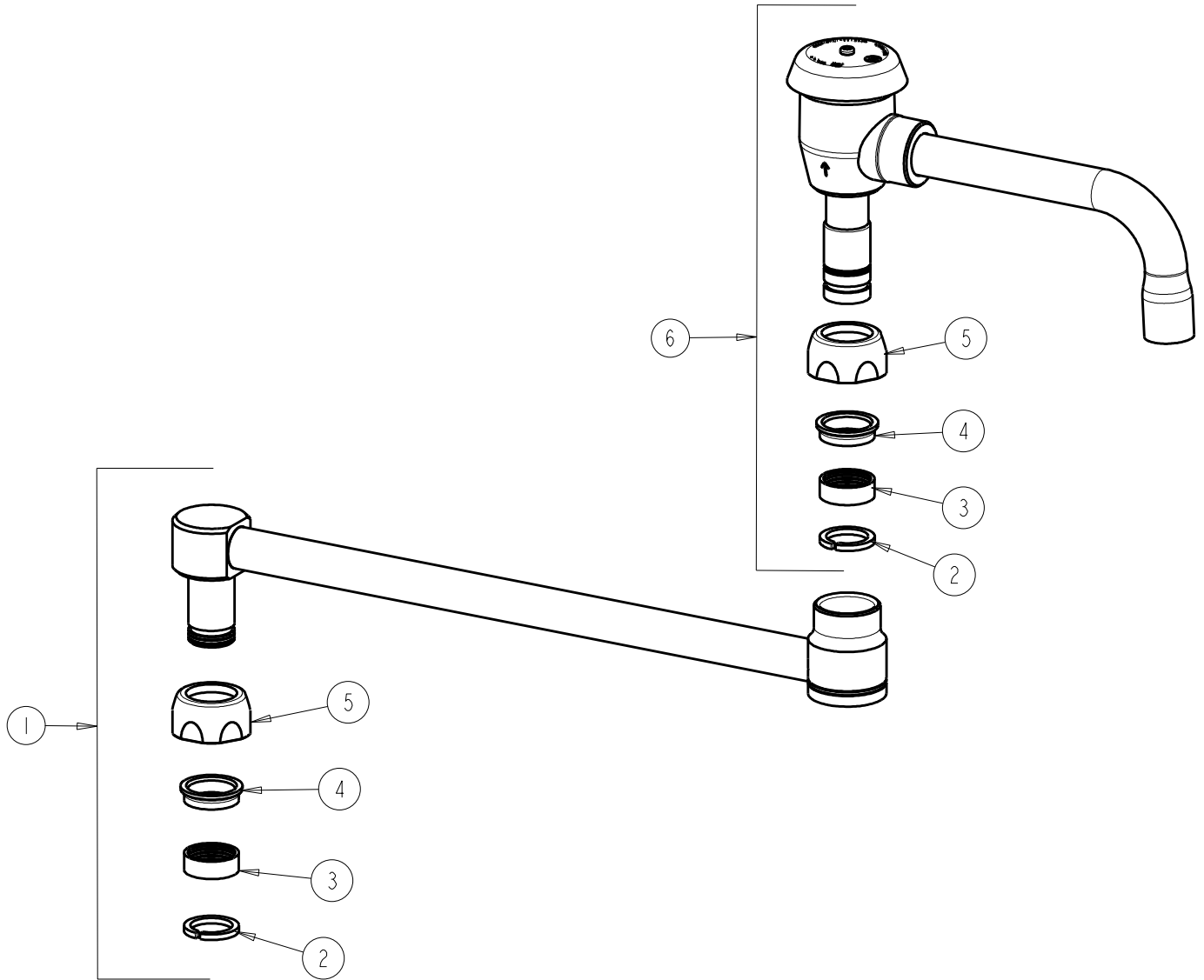
2100 South Clearwater Drive
Des Plaines, IL 60018
Phone: 847-803-5000
Fax: 847-803-5454
www.chicagofaucets.com

FOR TECHNICAL ASSISTANCE
1-800-TEC-TRUE (1-800-832-8783)

REPAIR PARTS

BY: SID DATE: 10-24-14
CHK: *[Signature]* REV:

| | |
|---------------------|--------------|
| FITTING NO. | DJ18BVBKABCP |
| SUBMITTED MODEL NO. | |
| ITEM NO. | |



| ITEM | PART NO. | DESCRIPTION |
|------|----------------|----------------------------|
| 1 | 686-126KJKABCP | SPOUT ARM, SWING JOINT |
| 2 | 1-126JKNF | SPLIT RING |
| 3 | 1-006JKNF | SPOUT PACKING |
| 4 | 1-104JKNF | SPOUT GLAND |
| 5 | 1100-208JKCP | NUT, SPOUT 1-1/16-18 UNEF |
| 6 | L6BVBKABCP | VACUUM BREAKER SWING SPOUT |