

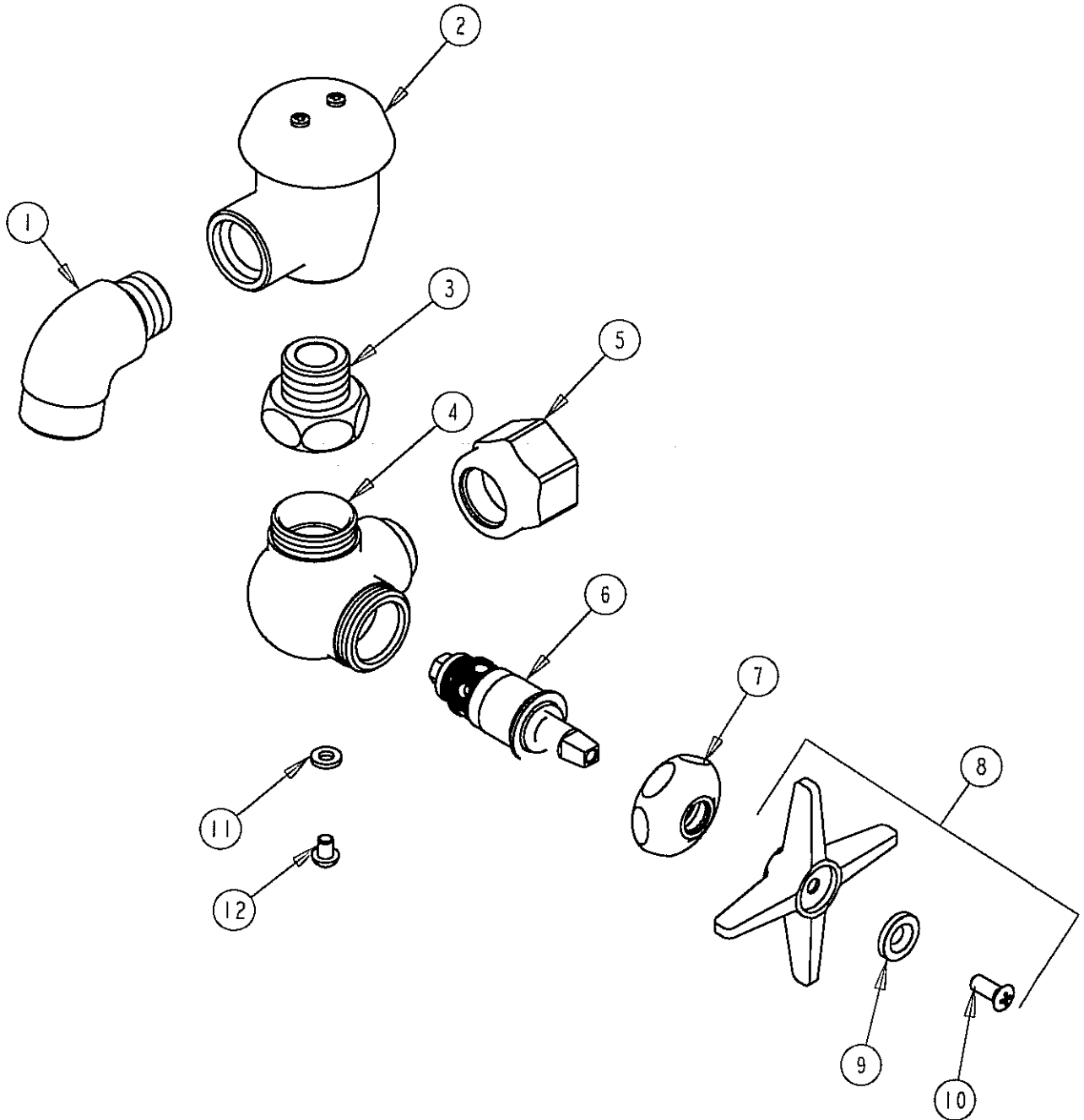
PARTS LIST

BY: SID
CHK'D: *[Signature]*



FINISH: AS SPECIFIED
DATE: 05-04-05

998-633



ITEM NO.	PART NO.	DESCRIPTION	ITEM NO.	PART NO.	DESCRIPTION
1	998-003	CAST SPOUT	7	1-214	CAP
2	892	FOR PARTS SEE 892	8	633PL	4-ARM PLAIN HANDLE ASSEMBLY
3	683-003	ADAPTER	9	633-223	INDEX BUTTON (WHITE)
4	-----	VALVE BODY (NOT SOLD SEPARATELY)	10	420-010	SCREW
5	998-002	ADAPTER	11	998-004	WASHER
6	217XTLH	SLO-COMPRESSION UNIT (LH)	12	1-317	SCREW