

**CHICAGO FAUCETS**  
a Geberit company

2100 South Clearwater Drive  
Des Plaines, IL 60018  
Phone: 847-803-5000  
Fax: 847-803-5454  
www.chicagofaucets.com

# REPAIR PARTS

BY: JAR      DATE: 09-16-09  
CHK: *[Signature]*      REV:

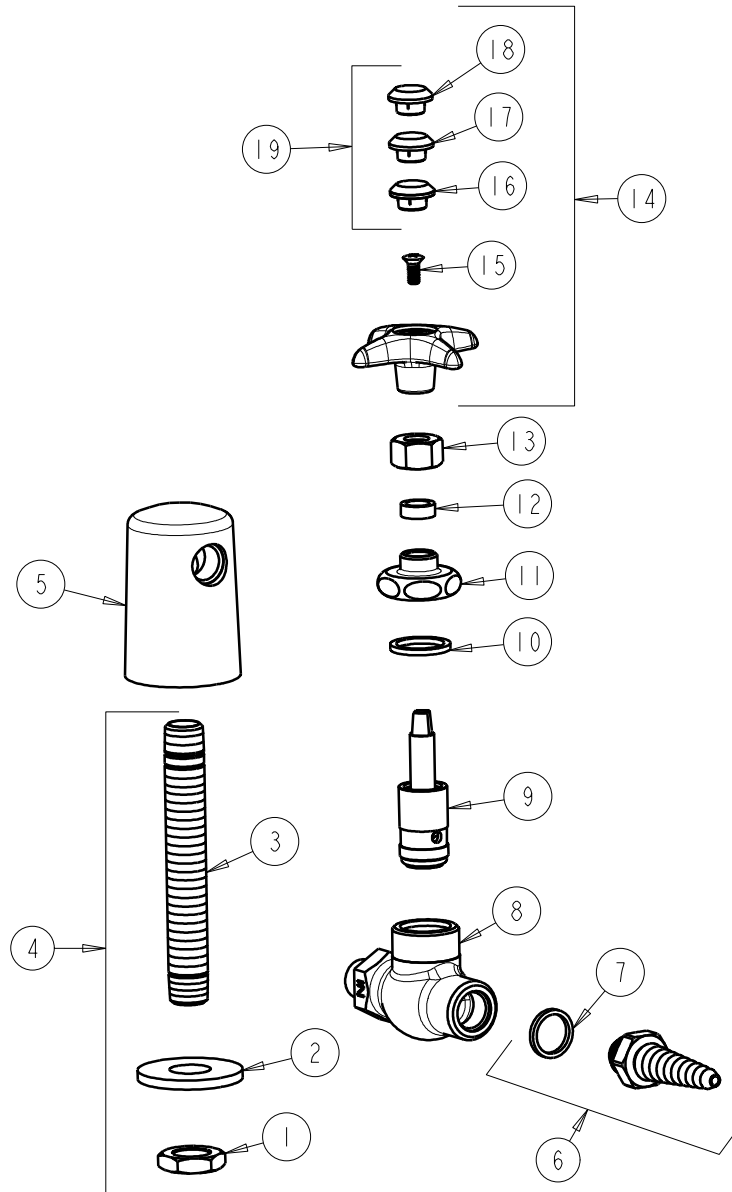
FITTING NO.

**980-WSV937CHAGVSAM**

SUBMITTED MODEL NO.

ITEM NO.

**FOR TECHNICAL ASSISTANCE**  
**1-800-TEC-TRUE (1-800-832-8783)**



ITEM	PART NO.	DESCRIPTION	ITEM	PART NO.	DESCRIPTION
1	705-008JKRBF	NUT	11	937-018JKSAM	CAP NUT
2	705-010JKNF	STEEL WASHER	12	244-217JKNF	PACKING
3	957-003JKRBF	MALE THREAD SHANK	13	937-010JKSAM	NUT
4	957-003KJKRBF	SHANK ASSEMBLY 3/8 X 4-3/4	14	204-AGVJKSAM	HANDLE ASSEMBLY (AGV)
5	—	TURRET (1 OUTLET)	15	420-010JKRCF	SCREW, 10-32 UNC PH 1/2
6	E7JKSAM	SERRATED HOSE NOZZLE	16	216-278JKNF	BUTTON 'AIR'
7	229-003JKNF	WASHER	17	216-328JKNF	BUTTON 'GAS'
8	—	BODY (NOT SOLD SEPARATLY)	18	216-378JKNF	BUTTON 'VAC'
9	962-XJKSAM	NEEDLE VALVE UNIT	19	216-PPJKNF	PRE-PACK (AIR, GAS, VAC)
10	1-043JKNF	GASKET, CAP 1 X .80 X .09			