



a Geberit company

2100 South Clearwater Drive
Des Plaines, IL 60018
Phone: 847-803-5000
Fax: 847-803-5454
www.chicagofaucets.com

REPAIR PARTS

BY: SID DATE: 02-18-02
CHK: *[Signature]* REV: 06-03-09

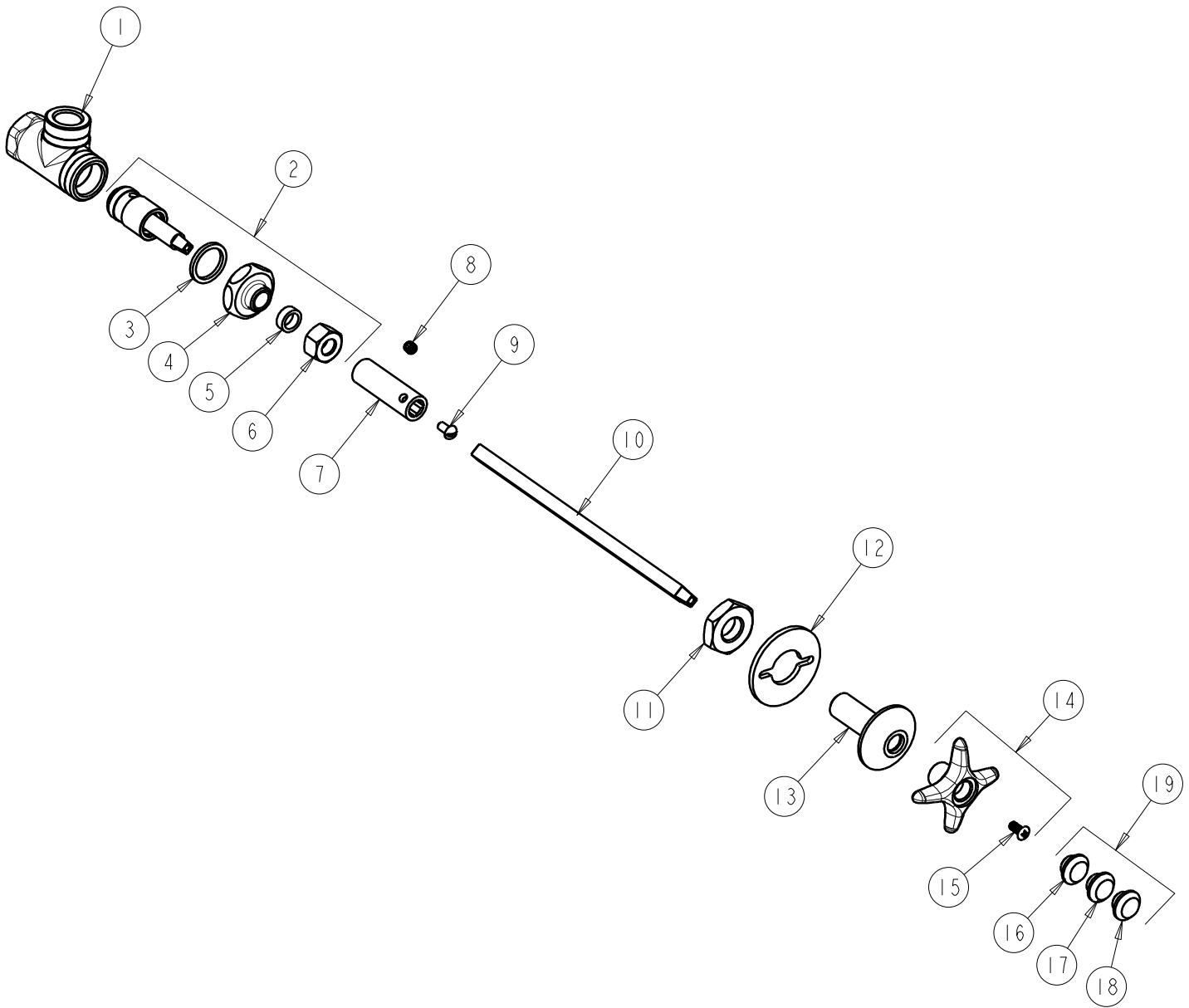
FITTING NO.

962-VOGAGVCP

SUBMITTED MODEL NO.

ITEM NO.

FOR TECHNICAL ASSISTANCE
1-800-TEC-TRUE (1-800-832-8783)



ITEM	PART NO.	DESCRIPTION	ITEM	PART NO.	DESCRIPTION
1	—	VALVE BODY (NOT SOLD SEPERATELY)	11	56-024JKRBF	NUT
2	962-XJKNF	NEEDLE VALVE UNIT	12	807-112JKNF	WASHER
3	1-043JKNF	GASKET, CAP 1 X .80 X .09	13	957-007JKKCP	FLANGE ASSEMBLY
4	937-018JKRCF	CAP NUT	14	204-LESS216-28JKCP	HANDLE ASSEMBLY
5	244-217JKNF	PACKING	15	420-010JKRCF	SCREW, 10-32 UNC PH 1/2
6	937-010JKCP	NUT	16	216-278JKNF	BUTTON 'AIR'
7	638-108JKRBF	SLEEVE	17	216-328JKNF	BUTTON 'GAS'
8	371-009JKNF	SET SCREW	18	216-378JKNF	BUTTON 'VAC'
9	1-017JKRBF	SCREW	19	216-PPJKNF	PRE-PACK (AIR, GAS, VAC)
10	957-001JKRCF	STEM (23)			