

**CHICAGO FAUCETS**  
a Geberit company

2100 South Clearwater Drive  
Des Plaines, IL 60018  
Phone: 847-803-5000  
Fax: 847-803-5454  
www.chicagofaucets.com

**REPAIR PARTS**

FITTING NO.

**962-VOCP**

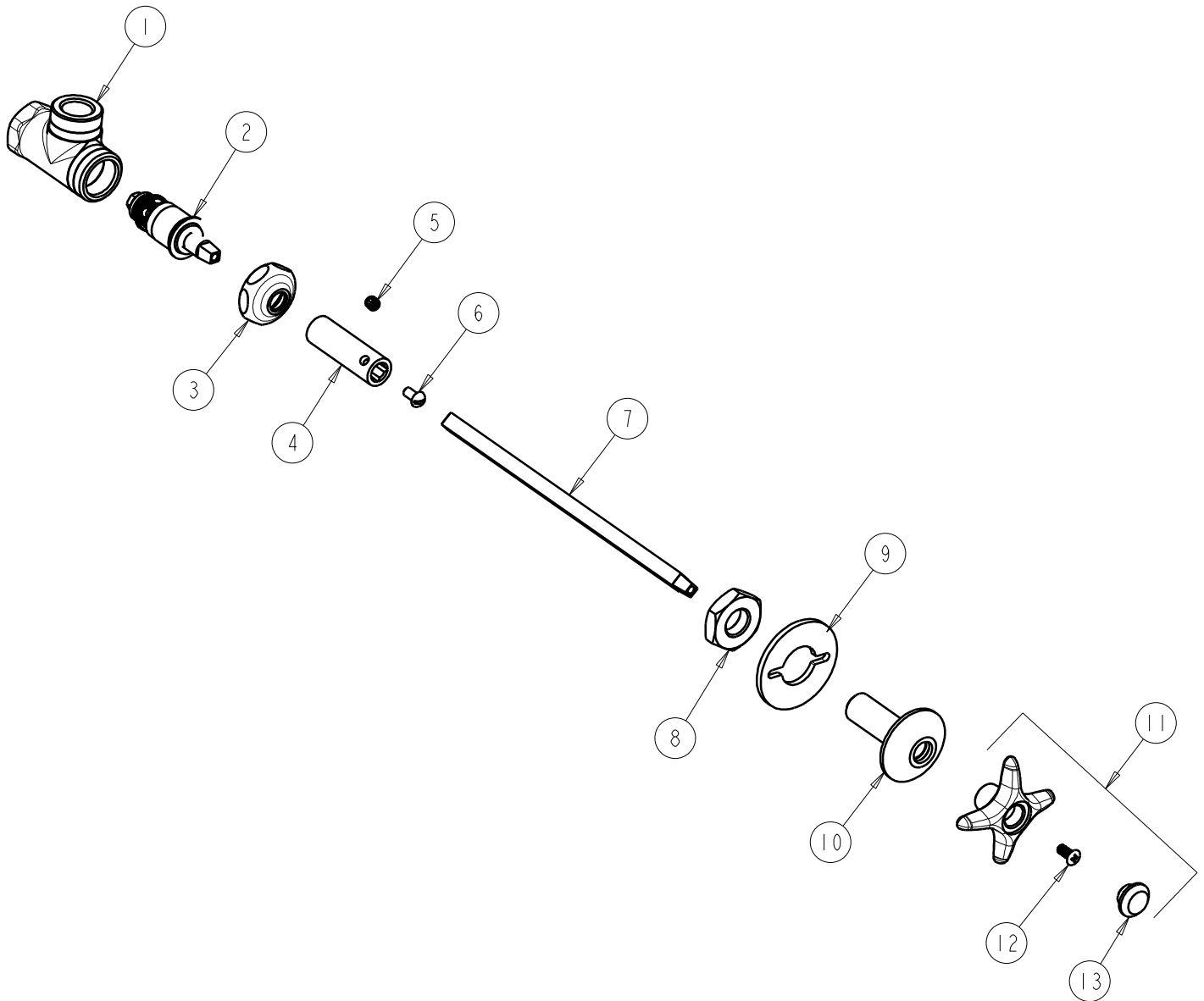
SUBMITTED MODEL NO.

ITEM NO.

BY: SID DATE: 02-18-02

CHK: *[Signature]* REV: 06-03-09

**FOR TECHNICAL ASSISTANCE**  
**1-800-TEC-TRUE (1-800-832-8783)**



ITEM	PART NO.	DESCRIPTION
1	---	VALVE BODY (NOT SOLD SEPERATELY)
2	217-XTLHJKNF	CARTRIDGE, SLO-COMPRESSION
3	1-214JKCP	CAP
4	638-108JKRBF	SLEEVE
5	371-009JKNF	SET SCREW
6	1-017JKRBF	SCREW
7	957-001JKRCF	STEM (23)
8	56-024JKRBF	NUT
9	807-112JKNF	WASHER
10	957-007KJKCP	FLANGE ASSEMBLY
11	204-CWJKCP	HANDLE ASSEMBLY
12	420-010JKRCF	SCREW, 10-32 UNC PH 1/2
13	216-178JKNF	BUTTON 'CW'