



a Geberit company

2100 South Clearwater Drive  
Des Plaines, IL 60018  
Phone: 847-803-5000  
Fax: 847-803-5454  
www.chicagofaucets.com

# REPAIR PARTS

BY: SID DATE: 08-19-15

CHK: *AR* REV:

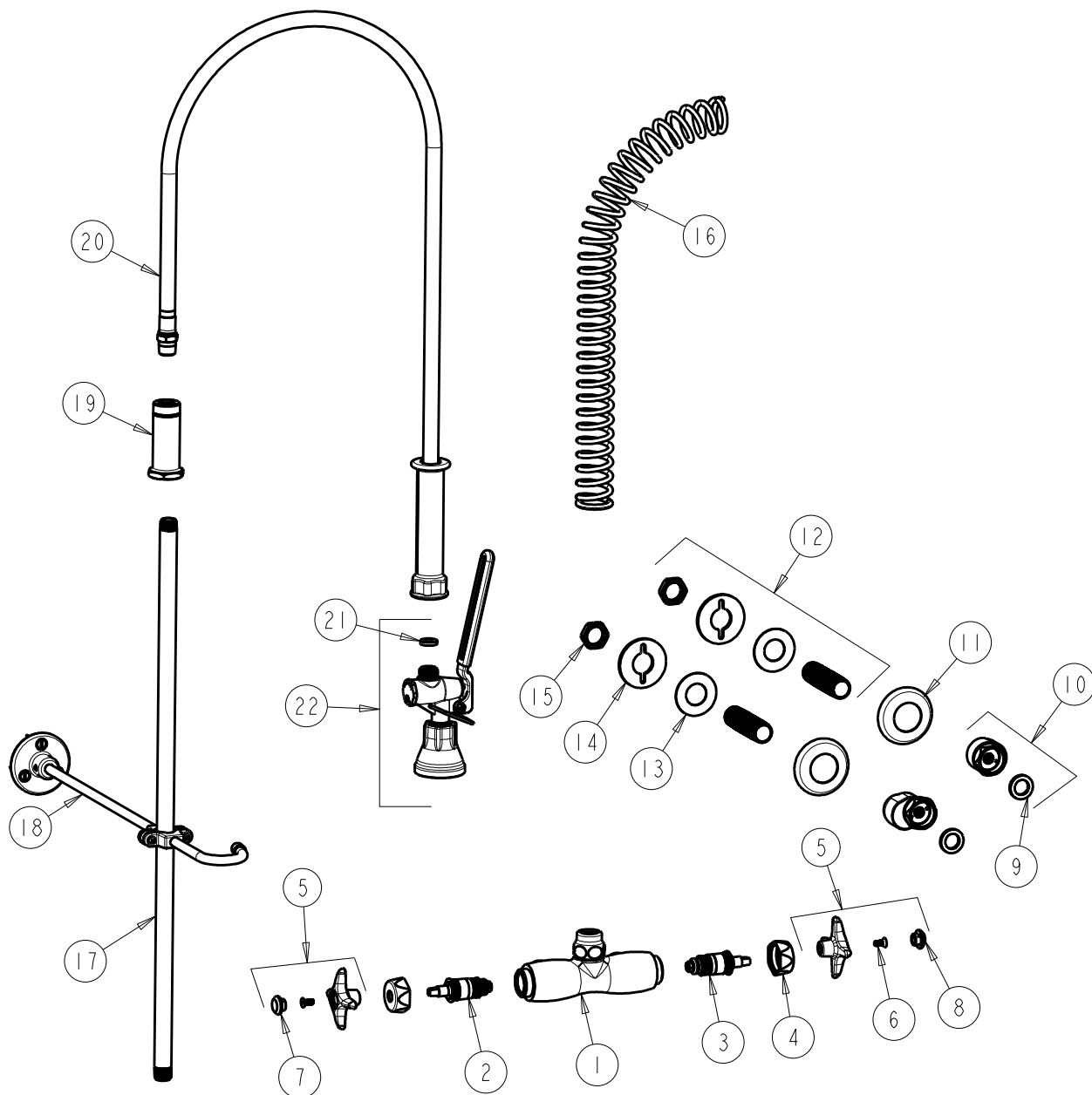
FITTING NO.

923-GCL204WSAB

SUBMITTED MODEL NO.

ITEM NO.

**FOR TECHNICAL ASSISTANCE**  
1-800-TEC-TRUE (1-800-832-8783)



ITEM	PART NO.	DESCRIPTION	ITEM	PART NO.	DESCRIPTION
1	-----	VALVE BODY (NOT SOLD SEPARATELY)	12	932-001KJKABRBF	INLET SHANK ASSEMBLY
2	217-XTLHJKABNF	CARTRIDGE, SLO-COMPRESSION (LH)	13	333-103JKNF	RUBBER WASHER
3	217-XTRHJKABNF	CARTRIDGE, SLO-COMPRESSION (RH)	14	807-112JKNF	WASHER
4	444-005JKCP	CAP	15	49-004JKRBF	LOCKNUT
5	204-PRJKCP	HANDLE, 4 ARM (PAIR)	16	919-014JKCP	SPRING
6	420-020JKNF	SCREW, 1/8 FLAT HEX HEAD X 1/2	17	919-039JKABCP	3/8" NPT X 23" RISER
7	216-128JKNF	BUTTON 'HW'	18	902-MHJKCP	PIPE STRAP AND HOOK ASSEMBLY
8	216-178JKNF	BUTTON 'CW'	19	919-038JKABCP	GUIDE SHANK
9	1-011JKABNF	WASHER, .97 X .62 X .12	20	83-44ABNF	44" HOSE AND HANDLE ASSEMBLY
10	GCJKABCP	ARM ASSEMBLY 'GC' WITH WASHER	21	919-243JKABNF	GASKET, .685 X .375 X .125
11	1-055JKCP	FLANGE	22	90-LABCP	PRE-RINSE VALVE, LOW FLOW