

CHICAGO FAUCETS
a Geberit company

2100 South Clearwater Drive
Des Plaines, IL 60018
Phone: 847-803-5000
Fax: 847-803-5454
www.chicagofaucets.com

REPAIR PARTS

FITTING NO.

919-AS613AABCP

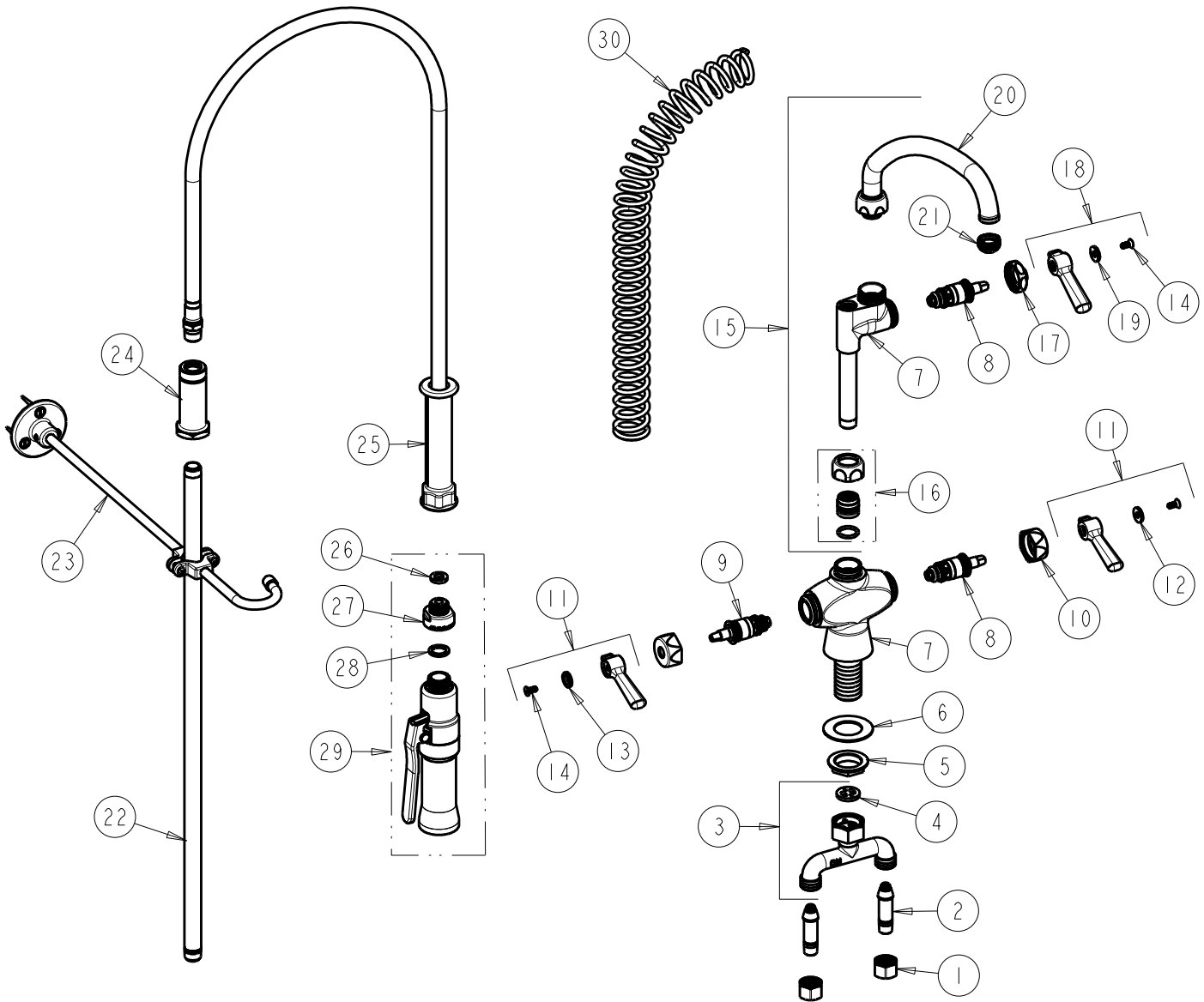
SUBMITTED MODEL NO.

ITEM NO.

BY: JAR DATE: 03-25-15

CHK: *JAR* REV:

FOR TECHNICAL ASSISTANCE
1-800-TEC-TRUE (1-800-832-8783)



ITEM	PART NO.	DESCRIPTION	ITEM	PART NO.	DESCRIPTION
1	49-005JKRBF	COUPLING NUT	16	143-PPJKABNF	PRE-PACK
2	58-018KJKABRBF	TAILPIECE	17	1-214JKCP	CAP
3	50-010KJKABRBF	TEE CONNECTION ASSEMBLY	18	369-PLJKCP	PLAIN LEVER HANDLE
4	50-008JKABNF	RUBBER WASHER	19	633-223JKNF	INDEX BUTTON (WHITE)
5	50-003JKRBF	LOCKNUT	20	L9LEOJKAB	SPOUT, 9-1/2 C-C
6	50-014JKNF	STEEL WASHER	21	E1JKABRCF	OUTLET, QUIXTOP
7	-----	VALVE BODY (NOT SOLD SEPARATELY)	22	919-039JKABCP	3/8" NPT X 23" RISER
8	1-099XTJKABNF	QUATURN CARTRIDGE (RH)	23	902-MHJKCP	PIPE STRAP AND HOOK ASSEMBLY
9	1-100XTJKABNF	QUATURN CARTRIDGE (LH)	24	919-038JKABCP	GUIDE SHANK
10	444-005JKCP	CAP	25	83-44ABNF	44" HOSE AND HANDLE ASSEMBLY
11	369-PRJKCP	HANDLE, 2-3/8 LEVER (PAIR)	26	919-243JKABNF	GASKET, .685 X .375 X .125
12	633-123JKNF	INDEX BUTTON (BLUE)	27	919-046JKABRCF	ADAPTER, PRE-RINSE
13	633-023JKNF	INDEX BUTTON (RED)	28	919-244JKABNF	GASKET, .825 X .590 X .072
14	420-020JKNF	SCREW, 1/8 FLAT HEX HEAD X 1/2	29	99-ASAB	ADJUSTABLE SPRAY PRE-RINSE VALVE
15	613-AABCP	PRE-RINSE ADAPTA FITTING	30	919-014JKCP	SPRING