

**CHICAGO FAUCETS**  
a Geberit company

2100 South Clearwater Drive  
Des Plaines, IL 60018  
Phone: 847-803-5000  
Fax: 847-803-5454  
www.chicagofaucets.com

# REPAIR PARTS

FITTING NO.

**857-E12-665PSHCP**

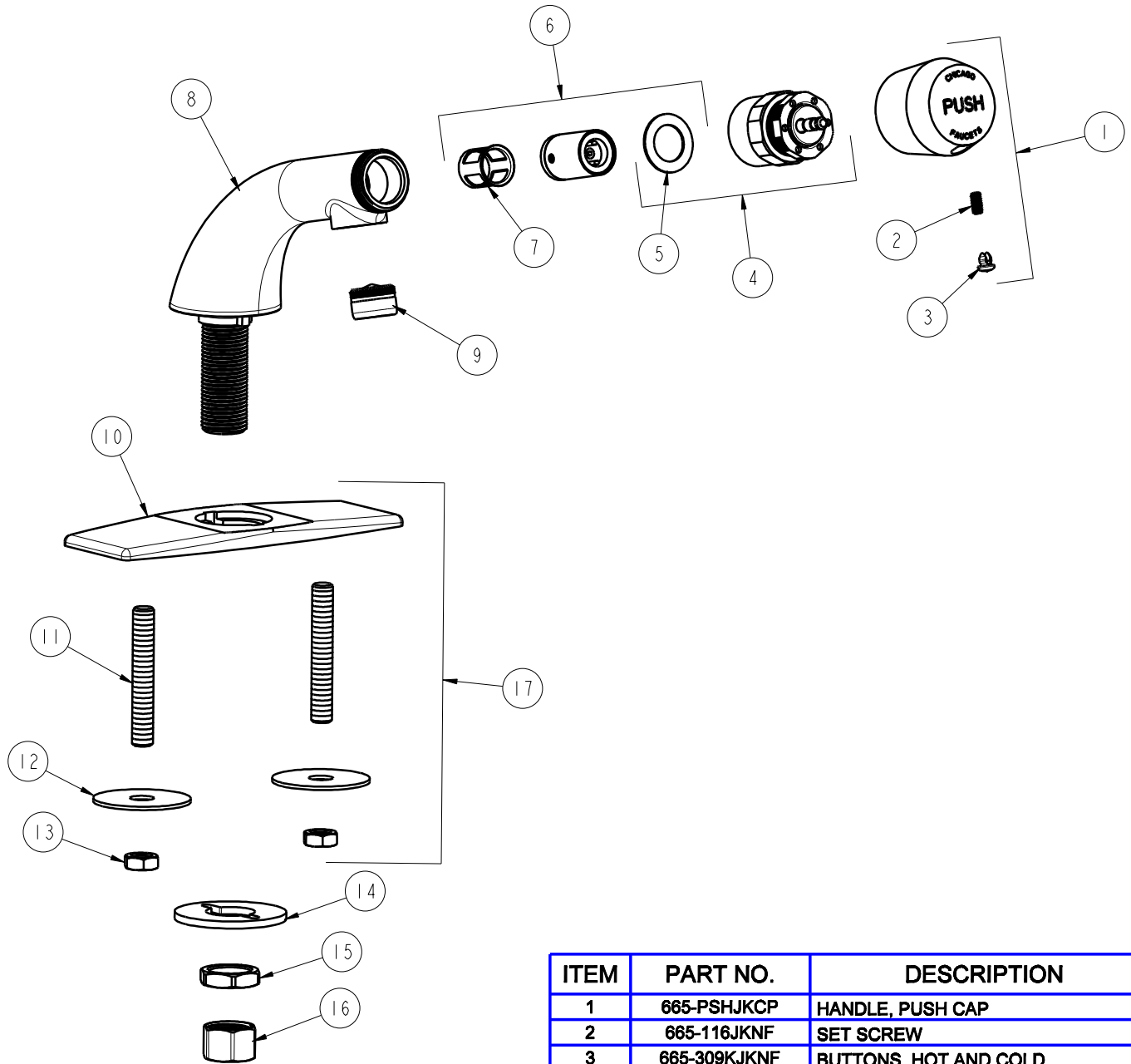
SUBMITTED MODEL NO.

ITEM NO.

BY: SID DATE: 06-27-02

CHK: *[Signature]* REV: 04-15-09

**FOR TECHNICAL ASSISTANCE**  
**1-800-TEC-TRUE (1-800-832-8783)**



ITEM	PART NO.	DESCRIPTION
1	665-PSHJKCP	HANDLE, PUSH CAP
2	665-116JKNF	SET SCREW
3	665-309KJKNF	BUTTONS, HOT AND COLD
4	665-190KJKNF	ACTUATOR ASSEMBLY
5	665-011JKNF	WASHER, SEALING
6	671-XJKNF	METERING VALVE CARTRIDGE
7	667-402JKNF	MVP FILTER
8	---	VALVE BODY( NOT SOLD SEPARATELY)
9	E12JKCP	SOFTFLO OUTLET
10	807-003JKCP	COVER
11	634-215JKRBF	STUD, 3/8-24 UNF X 2.5
12	634-124JKNF	WASHER, STEEL 1.75 X .43 X .06
13	689-113JKRBF	NUT, 3/8-24 UNF X .56 X .22
14	807-112JKNF	WASHER
15	49-004JKRBF	LOCKNUT
16	49-005JKRBF	COUPLING NUT
17	807-003JKCP	COVER ASSEMBLY