

CHICAGO FAUCETS

a Geberit company

2100 South Clearwater Drive
Des Plaines, IL 60018
Phone: 847-803-5000
Fax: 847-803-5454
www.chicagofaucets.com

FOR TECHNICAL ASSISTANCE
1-800-TEC-TRUE (1-800-832-8783)

REPAIR PARTS

BY: SID DATE: 08-11-09

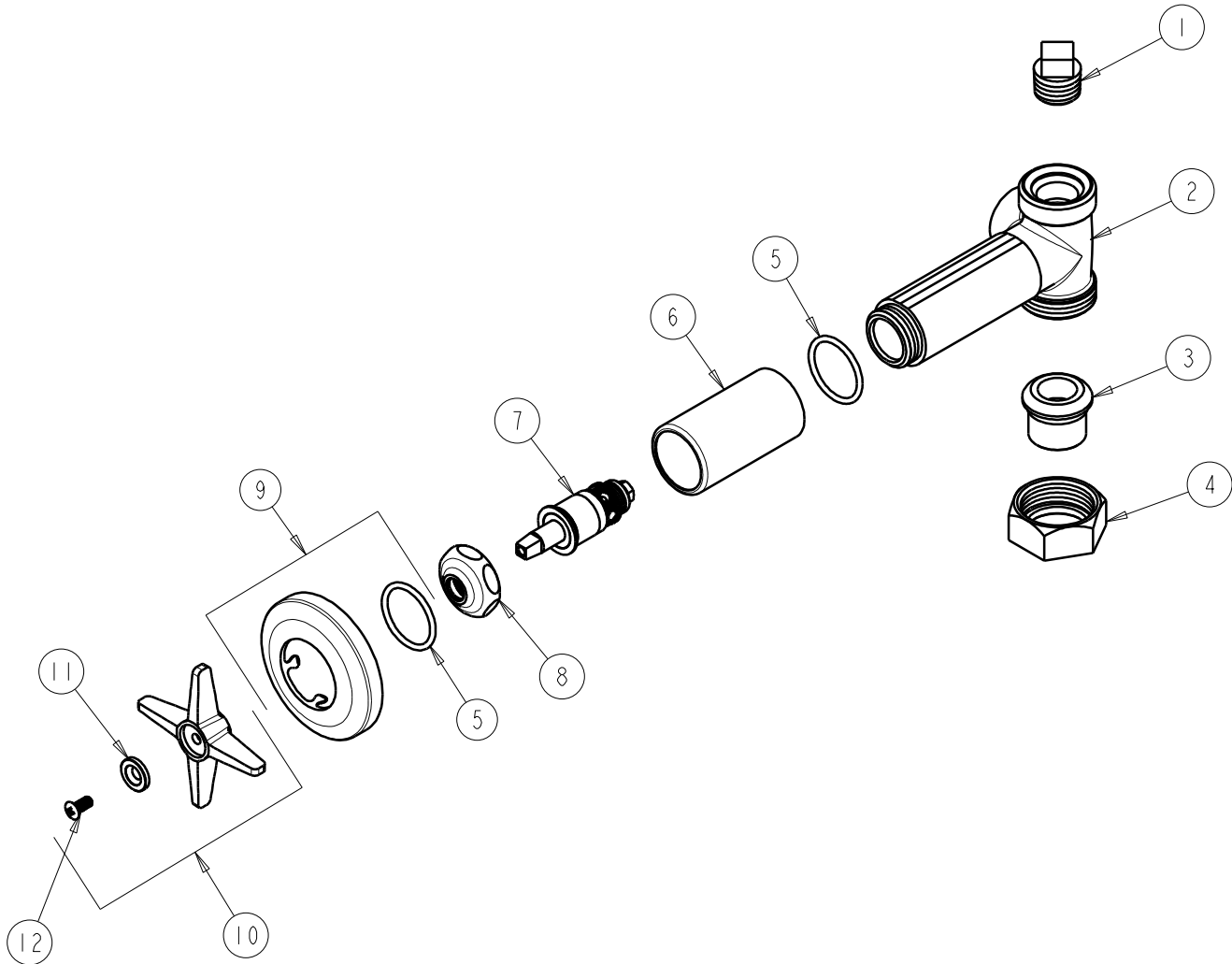
CHK: *[Signature]* REV:

FITTING NO.

769-PLCP

SUBMITTED MODEL NO.

ITEM NO.



ITEM	PART NO.	DESCRIPTION	ITEM	PART NO.	DESCRIPTION
1	234-032JKRCF	1/2 NPT PLUG	7	217-XTLHJKNF	CARTRIDGE, SLO-COMPRESSION
2	----	VALVE BODY (NOT SOLD SEPARATELY)	8	1-214JKCP	CAP
3	177-003JKCP	UNION TAILPIECE	9	633-201JKCP	FLANGE & O-RING
4	177-002JKCP	UNION NUT	10	633-PLJKCP	4-ARM CROSS HANDLE
5	5235-107JKNF	O-RING	11	633-223JKNF	INDEX BUTTON (WHITE)
6	5235-106JKCP	SLEEVE	12	420-010JKRCF	SCREW, 10-32 UNC PH 1/2