



a Geberit company

2100 South Clearwater Drive  
Des Plaines, IL 60018  
Phone: 847-803-5000  
Fax: 847-803-5454  
www.chicagofaucets.com

# REPAIR PARTS

BY: SID DATE: 03-10-11

CHK: *[Signature]* REV: 10-10-13

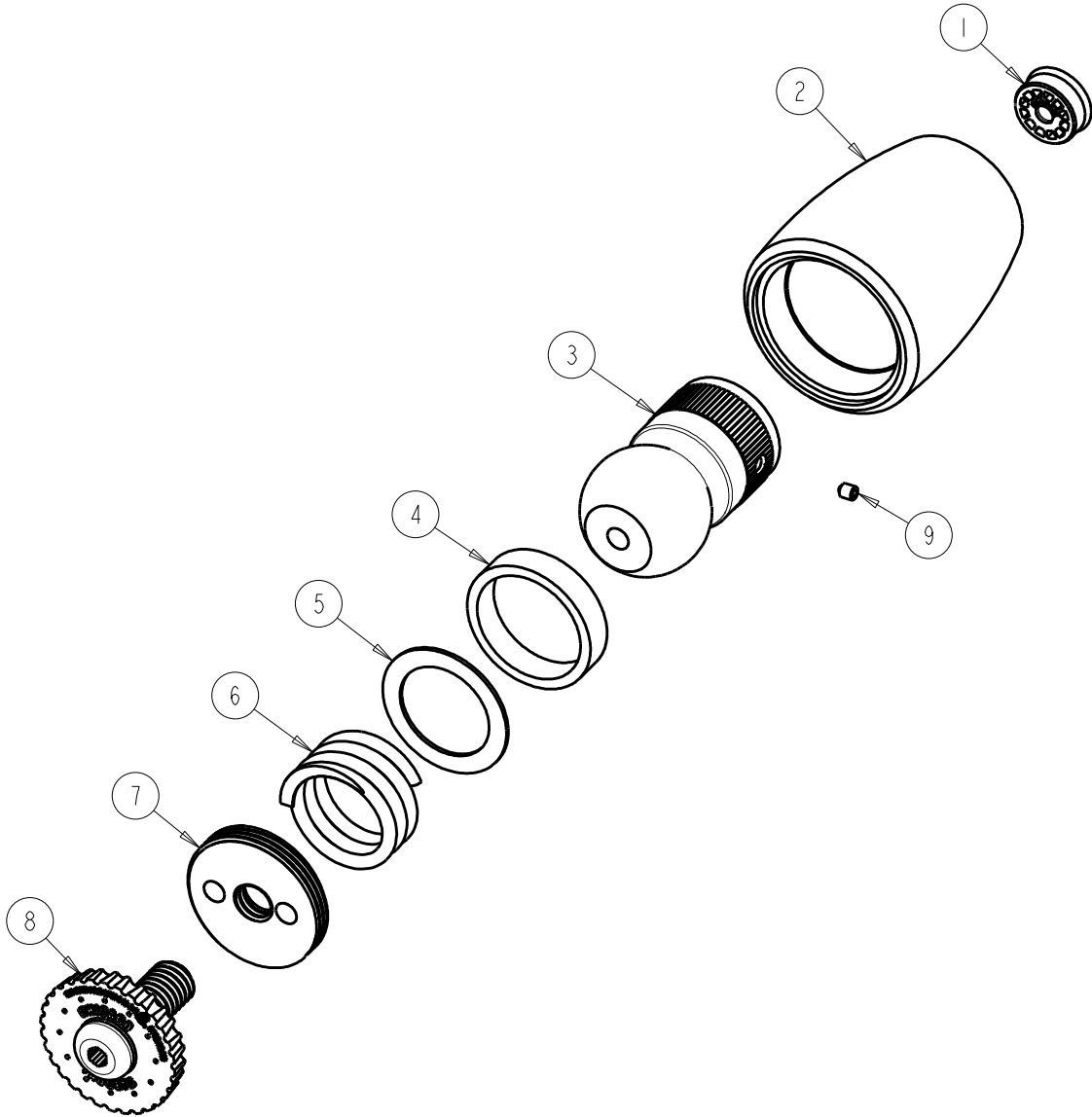
FITTING NO.

620-VP CP

SUBMITTED MODEL NO.

ITEM NO.

**FOR TECHNICAL ASSISTANCE**  
1-800-TEC-TRUE (1-800-832-8783)



| ITEM | PART NO.      | DESCRIPTION                       |
|------|---------------|-----------------------------------|
| 1    | -----         | FLOW CONTROL 2.5 GPM MAX          |
| 2    | -----         | SHOWER BODY (NOT SOLD SEPARATELY) |
| 3    | -----         | SHOWER BALL (NOT SOLD SEPARATELY) |
| 4    | 620-138JKNF   | RUBBER WASHER                     |
| 5    | 620-039JKRBF  | BRASS WASHER                      |
| 6    | 620-041JKNF   | COMPRESSION SPRING                |
| 7    | 620-140JKNF   | RETAINER                          |
| 8    | 620-036KJKRCF | FACE SPRAY 2.5 GPM                |
| 9    | 777-013JKNF   | SCREW, SET 6-32 X 1/8             |