

**CHICAGO FAUCETS**  
a Geberit company

2100 South Clearwater Drive  
Des Plaines, IL 60018  
Phone: 847-803-5000  
Fax: 847-803-5454  
www.chicagofaucets.com

**REPAIR PARTS**

FITTING NO.

**515-ABCP**

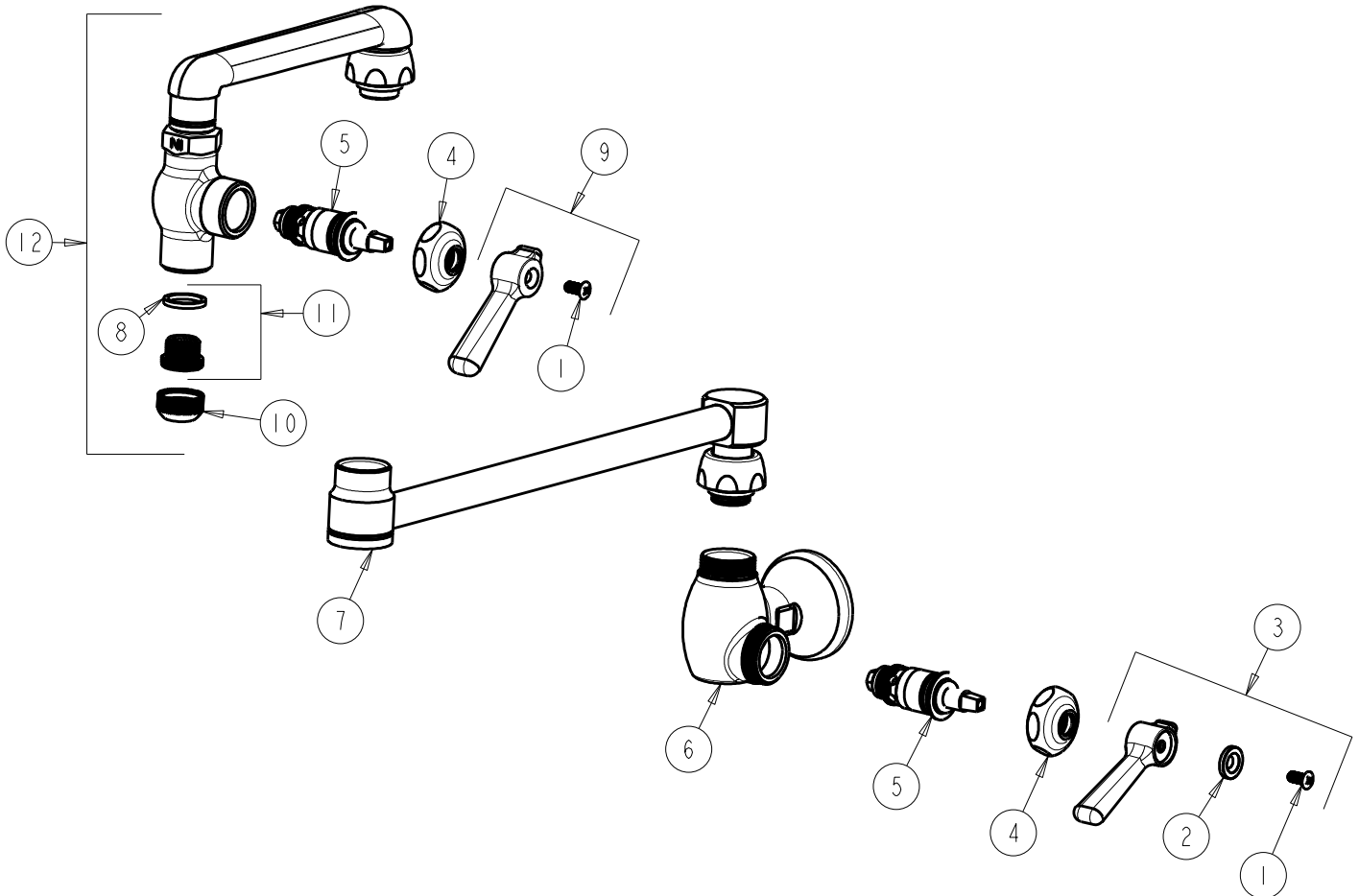
SUBMITTED MODEL NO.

ITEM NO.

**FOR TECHNICAL ASSISTANCE**  
1-800-TEC-TRUE (1-800-832-8783)

BY: JAR DATE: 10-20-11

CHK: *JAR* REV:



ITEM	PART NO.	DESCRIPTION
1	420-010JKRCF	SCREW, 10-32 UNC PH 1/2
2	633-123JKNF	INDEX BUTTON (BLUE)
3	369-COLDJKCP	LEVER HANDLE ASSEMBLY
4	1-214JKCP	CAP
5	1-099XTJKABNF	QUATURN UNIT (RH)
6	---	VALVE BODY (NOT SOLD SEPARATELY)
7	686-126KJKABCP	DOUBLE JOINTED SWING ARM
8	229-003JKNF	WASHER
9	269-JKNF	HEAT RESISTANT LEVER HANDLE
10	E1JKABRCF	QUIXTOP OUTLET
11	K2JKRCF	ADAPTER
12	S6E31JKCP	SPOUT ASSEMBLY