

**CHICAGO FAUCETS**  
a Geberit company

2100 South Clearwater Drive  
Des Plaines, IL 60018  
Phone: 847-803-5000  
Fax: 847-803-5454  
www.chicagofaucets.com

**REPAIR PARTS**

FITTING NO.

**2304-E35ABCP**

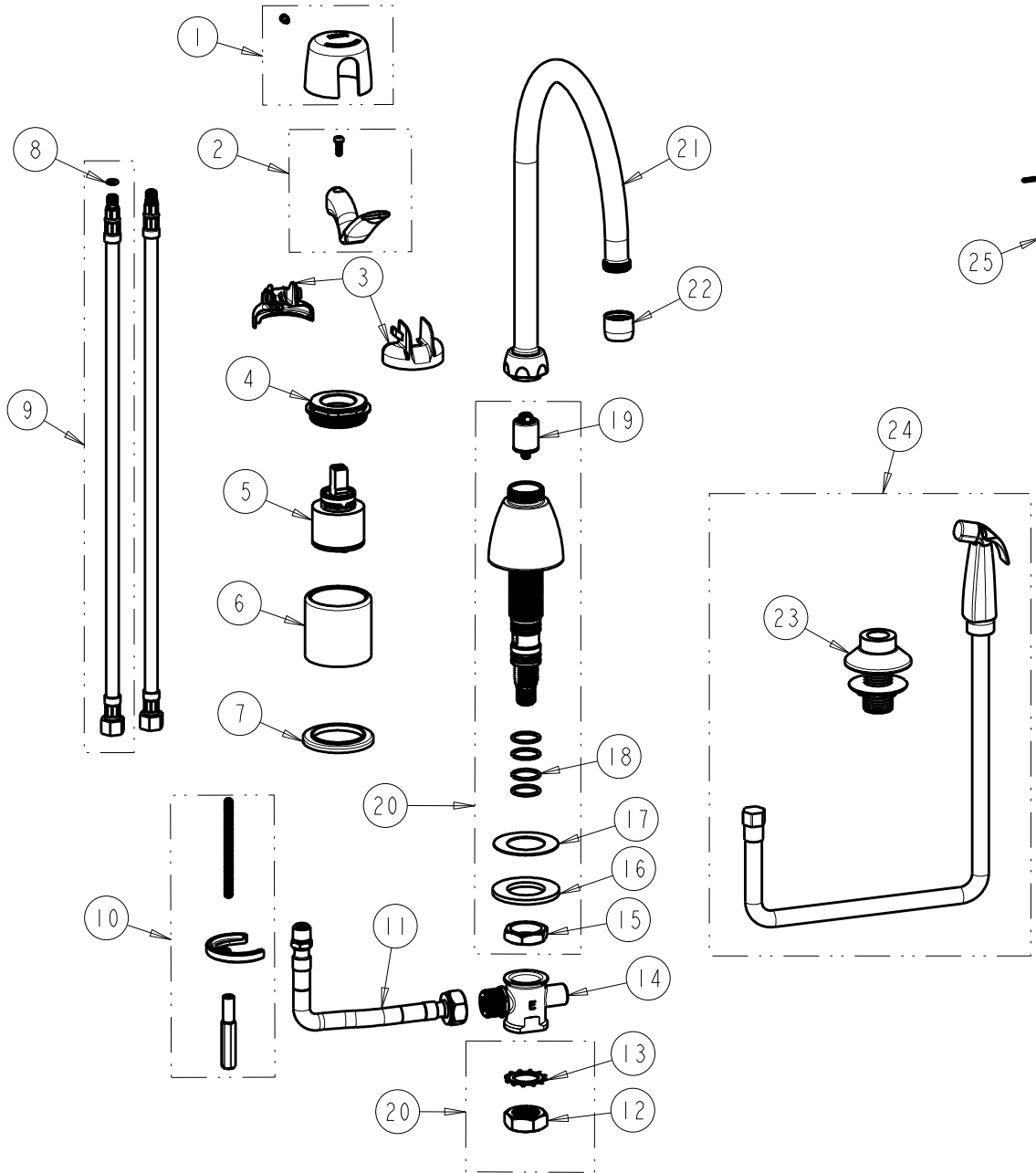
SUBMITTED MODEL NO.

ITEM NO.

BY: SID DATE: 05-04-12

CHK: ~~04~~ REV: 12-07-18

**FOR TECHNICAL ASSISTANCE**  
1-800-TEC-TRUE (1-800-832-8783)



| ITEM | PART NO.       | DESCRIPTION                     | ITEM | PART NO.        | DESCRIPTION                 |
|------|----------------|---------------------------------|------|-----------------|-----------------------------|
| 1    | 2200-122KJKCP  | CAP AND SCREW ASSEMBLY          | 14   | -----           | TEE ASSEMBLY                |
| 2    | 2200-225KJKCP  | LEVER HANDLE, 2-3/4"            | 15   | 250-054JKRBF    | LOCKNUT                     |
| 3    | 2200-021KJKNF  | CARTRIDGE SPIN CAP ASSEMBLY     | 16   | 50-014JKNF      | STEEL WASHER                |
| 4    | 2200-116JKRCF  | NUT, HOLDDOWN                   | 17   | 739-056JKNF     | RUBBER WASHER               |
| 5    | 2300-XJKABNF   | 40 mm SINGLE LEVER CARTRIDGE    | 18   | 50-035JKABNF    | O RING 0.739 X .070         |
| 6    | -----          | BODY (NOT SOLD SEPARATELY)      | 19   | 1103-006JKABNF  | DIVERTER VALVE              |
| 7    | 2300-014JKCP   | FLANGE, BODY                    | 20   | 785-502KJKCP    | SPOUT BASE                  |
| 8    | 50-102JKABNF   | O-RING .34 O.D. X .21 I.D X .07 | 21   | GN8AJKABCP      | SPOUT, GN 8" C-C            |
| 9    | 250-025KJKABNF | HOSE, SS BRAIDED 5/16-24 X 3/8  | 22   | E35JKABCP       | OUTLET, AERATOR 1.5 GPM     |
| 10   | 2200-015KJKNF  | KIT, MOUNTING HARDWARE          | 23   | 1103-014KJKNF   | FLANGE ASSEMBLY (BLACK)     |
| 11   | 250-006KJKABNF | HOSE W/ FIBER WASHER            | 24   | 1103-419KJKABNF | SPRAY HOSE & FLANGE (BLACK) |
| 12   | 250-055JKNF    | 3/4-16 HEX JAM NUT              | 25   | 665-505JKNF     | 3/32" HEX KEY               |
| 13   | 250-056JKNF    | 3/4" LOCK WASHER                |      |                 |                             |