

**CHICAGO FAUCETS**  
a Geberit company

2100 South Clearwater Drive  
Des Plaines, IL 60018  
Phone: 847-803-5000  
Fax: 847-803-5454  
www.chicagofaucets.com

# REPAIR PARTS

FITTING NO.

**2302-VPACP**

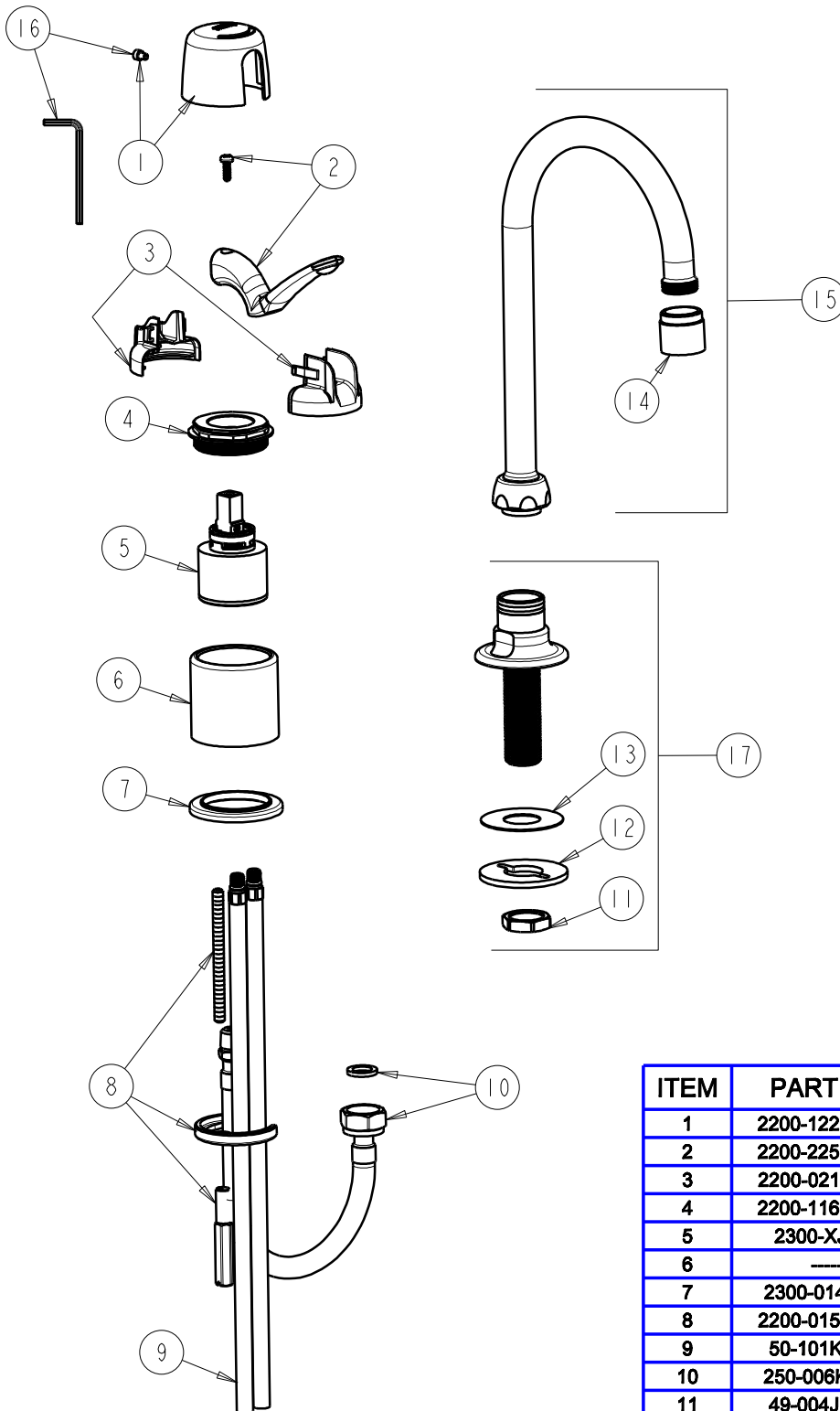
SUBMITTED MODEL NO.

ITEM NO.

BY: JAR DATE: 07-23-09

CHK: *JAR* REV:

**FOR TECHNICAL ASSISTANCE**  
**1-800-TEC-TRUE (1-800-832-8783)**



ITEM	PART NO.	DESCRIPTION
1	2200-122KJKCP	CAP AND SCREW ASSEMBLY
2	2200-225KJKCP	LEVER HANDLE
3	2200-021KJKNF	CARTRIDGE SPIN CAP ASSEMBLY
4	2200-116JKRCF	NUT, HOLDDOWN
5	2300-XJKNF	40 mm SINGLE LEVER CARTRIDGE
6	----	BODY (NOT SOLD SEPARATELY)
7	2300-014JKCP	FLANGE, BODY
8	2200-015KJKNF	HOLDDOWN KIT
9	50-101KJKNF	SUPPLY TUBE ASSEMBLY
10	250-006KJKNF	HOSE WITH FIBER WASHER
11	49-004JKRBF	LOCKNUT
12	807-112JKNF	WASHER
13	52-007JKNF	WASHER, RUBBER
14	E3VPJKCP	V.R. SOFTFLO AERATOR W/ V.R. KEY
15	GN2AE3VPJKCP	FOR PARTS SEE GN2AE3VPJKCP
16	2200-002KJKNF	WRENCH & HEX KEY
17	626-LESSSPTCP	SHANK AND FLANGE ASSEMBLY