

CHICAGO FAUCETS
a Geberit company

2100 South Clearwater Drive
Des Plaines, IL 60018
Phone: 847-803-5000
Fax: 847-803-5454
www.chicagofaucets.com

REPAIR PARTS

FITTING NO.

2302-CP

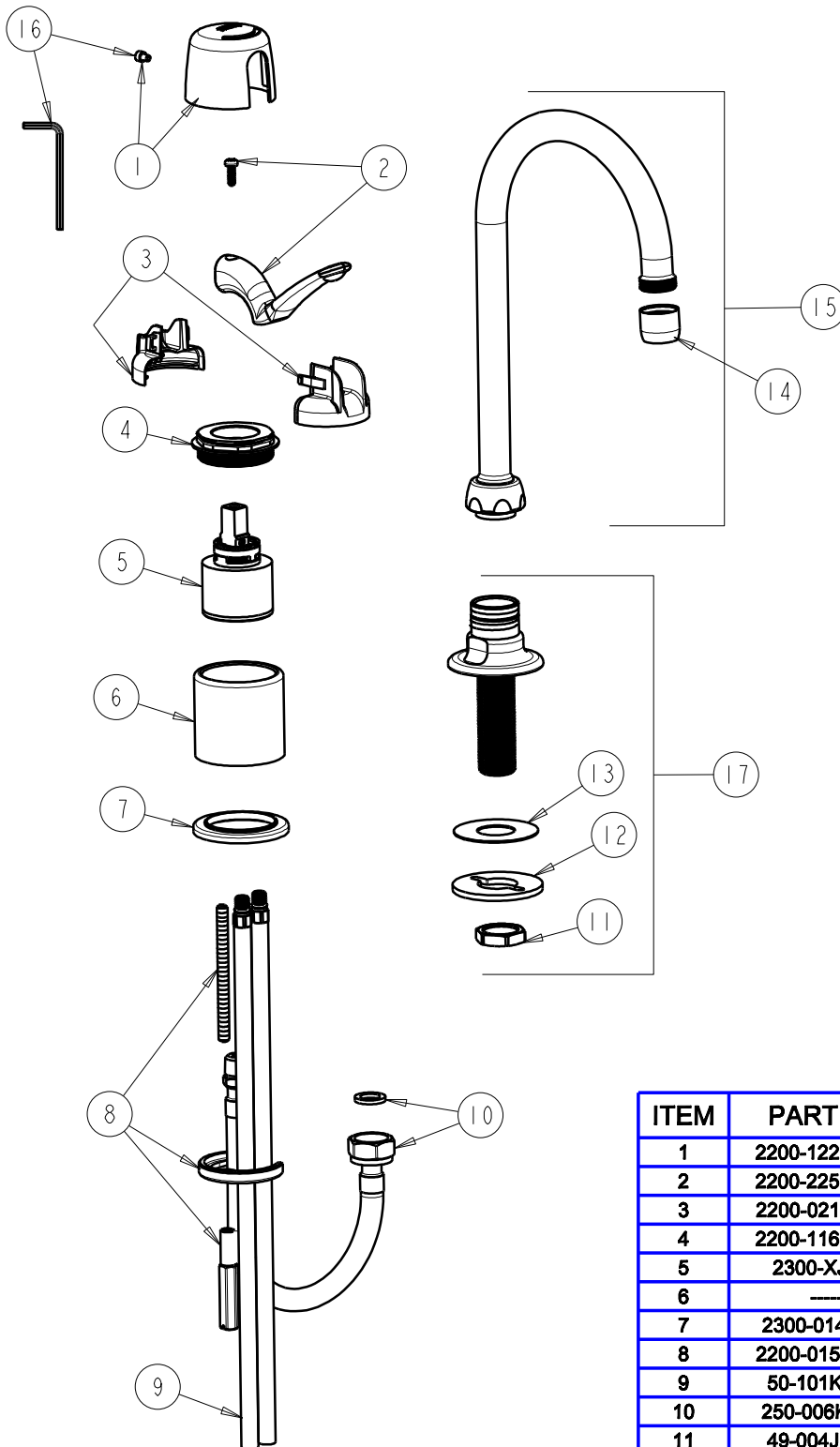
SUBMITTED MODEL NO.

ITEM NO.

BY: JAR DATE: 11-01-04

CHK: *JAR* REV: 06-02-09

FOR TECHNICAL ASSISTANCE
1-800-TEC-TRUE (1-800-832-8783)



| ITEM | PART NO. | DESCRIPTION |
|------|---------------|------------------------------|
| 1 | 2200-122KJKCP | CAP AND SCREW ASSEMBLY |
| 2 | 2200-225KJKCP | LEVER HANDLE |
| 3 | 2200-021KJKNF | CARTRIDGE SPIN CAP ASSEMBLY |
| 4 | 2200-116JKRCF | NUT, HOLDDOWN |
| 5 | 2300-XJKNF | 40 mm SINGLE LEVER CARTRIDGE |
| 6 | ---- | BODY (NOT SOLD SEPARATELY) |
| 7 | 2300-014JKCP | FLANGE, BODY |
| 8 | 2200-015KJKNF | HOLDDOWN KIT |
| 9 | 50-101KJKNF | SUPPLY TUBE ASSEMBLY |
| 10 | 250-006KJKNF | HOSE WITH FIBER WASHER |
| 11 | 49-004JKRBF | LOCKNUT |
| 12 | 807-112JKNF | WASHER |
| 13 | 52-007JKNF | WASHER, RUBBER |
| 14 | E3JKCP | SOFTFLO AERATOR OUTLET |
| 15 | GN2AE3JKCP | FOR PARTS SEE GN2AE3JKCP |
| 16 | 2200-002KJKNF | WRENCH & HEX KEY |
| 17 | 626-LESSSPTCP | SHANK AND FLANGE ASSEMBLY |