

**CHICAGO FAUCETS**  
a Geberit company

2100 South Clearwater Drive  
Des Plaines, IL 60018  
Phone: 847-803-5000  
Fax: 847-803-5454  
www.chicagofaucets.com

# REPAIR PARTS

FITTING NO.

**2300-E2805CP**

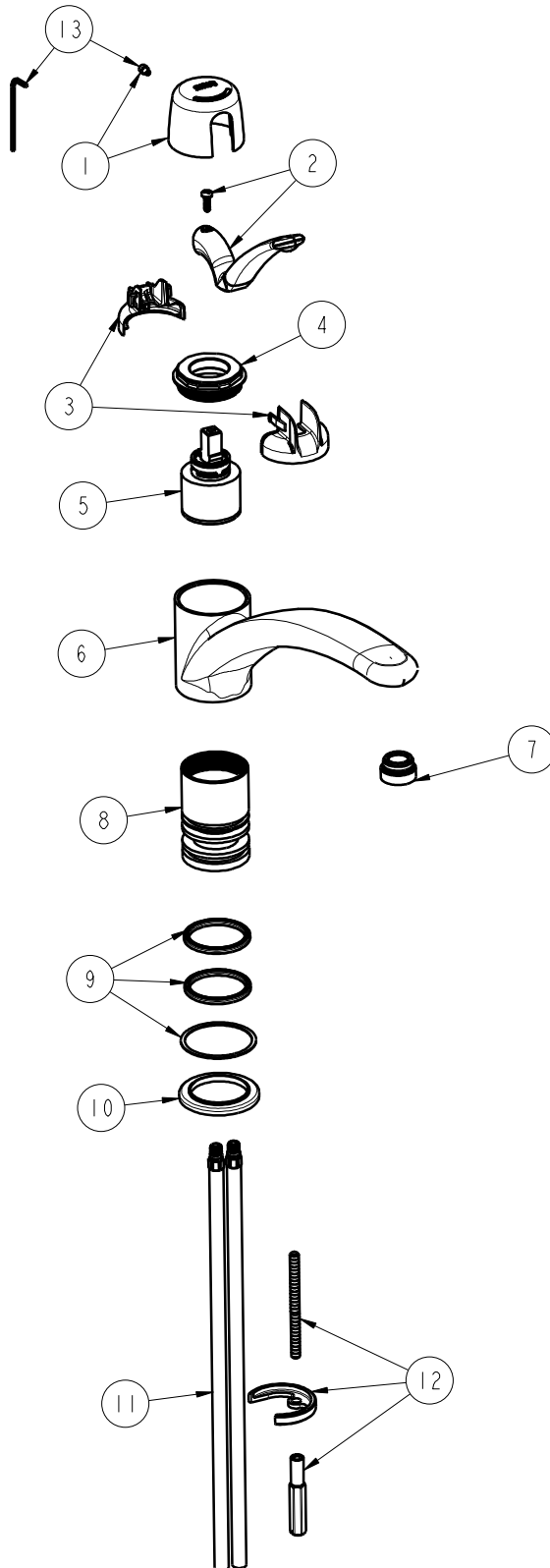
SUBMITTED MODEL NO.

ITEM NO.

BY: SID DATE: 11-06-08

CHK: *[Signature]* REV:

**FOR TECHNICAL ASSISTANCE**  
**1-800-TEC-TRUE (1-800-832-8783)**



ITEM	PART NO.	DESCRIPTION
1	2200-122KJKCP	CAP AND SCREW ASSEMBLY
2	2300-225KJKCP	LEVER HANDLE, KITCHEN ASSEMBLY
3	2200-021KJKNF	CARTRIDGE SPIN CAP ASSEMBLY
4	2200-116JKRCF	NUT, HOLDDOWN
5	2300-XJKNF	40 mm SINGLE LEVER CARTRIDGE
6	---	SPOUT
7	E2805JKCP	VANDAL PROOF SPRAY OUTLET
8	---	BODY, HUB, KITCHEN-L/SPRAY
9	2300-011KJKNF	QUAD RINGS & SLIP WASHER
10	2300-014JKCP	FLANGE, BODY
11	50-101KJKNF	SUPPLY TUBE ASSEMBLY
12	2200-015KJKNF	NUT, MOUNTING
13	2200-002KJKNF	WRENCH & HEX KEY