



2100 South Clearwater Drive  
Des Plaines, IL 60018  
Phone: 800-566-2100  
Fax: 847-803-5454  
www.geberitnorthamerica.com

# REPAIR PARTS

FITTING NO.

**131-CNF**

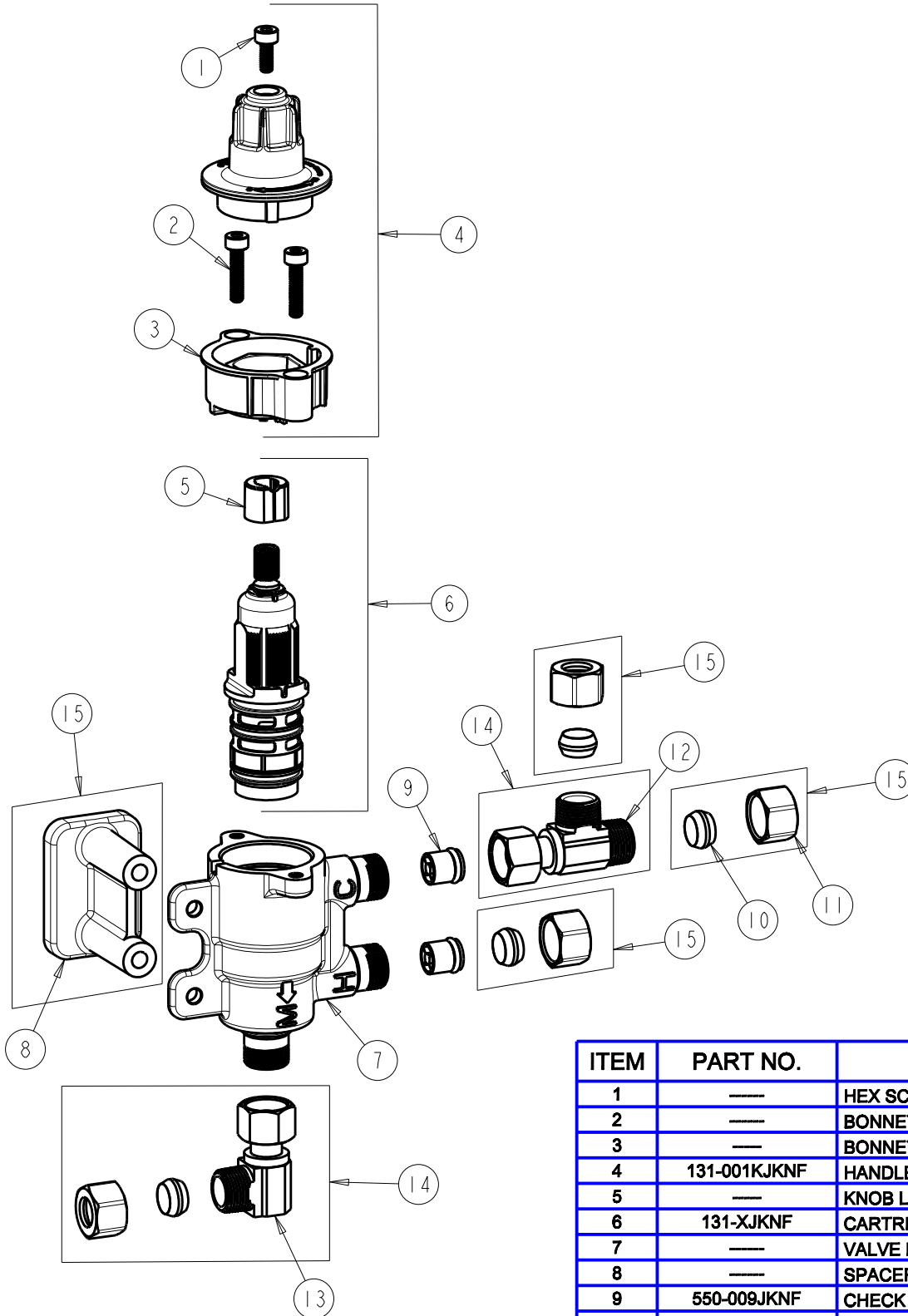
SUBMITTED MODEL NO.

ITEM NO.

BY: SID DATE: 03-11-11

CHK: *[Signature]* REV:

**FOR TECHNICAL ASSISTANCE**  
1-800-TEC-TRUE (1-800-832-8783)



ITEM	PART NO.	DESCRIPTION
1	---	HEX SCREW, M4x0.7x10mm
2	---	BONNET HEX SCREW, M4x0.7x18mm
3	---	BONNET
4	131-001KJKNF	HANDLE KIT
5	---	KNOB LOCATOR
6	131-XJKNF	CARTRIDGE KIT
7	---	VALVE BODY NOT SOLD SEPARATELY
8	---	SPACER
9	550-009JKNF	CHECK CARTRIDGE ASSEMBLY
10	---	FERRULE, 3/8 TUBE
11	---	COMPRESSION NUT, 3/8 TUBE
12	---	'T' BYPASS CONNECTOR, 3/8 TUBE
13	---	'L' BYPASS CONNECTOR, 3/8 TUBE
14	131-004KJKNF	THERMOSTATIC CONNECTORS KIT
15	131-003KJKNF	THERMOSTATIC NUT/FERRULE KIT