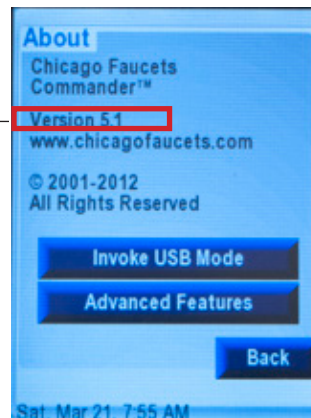


# Section 1: Introduction, Device, Updates

## 1.4 Updating Your Device

Your new Commander should normally come with the latest software and firmware installed. Refer to the update section of [www.chicagofaucets.com/commander](http://www.chicagofaucets.com/commander) page to review the version information.

To check if your device has the latest version, from Main Menu tap "ABOUT". Look for Version information. If your version is a lower number, you will need an update.



REGISTER your device at [chicagofaucets.com/commander](http://chicagofaucets.com/commander) to access software, firmware and hardware updates. Supply an e-mail to receive notification for future updates.

[chicagofaucets.com/commander](http://chicagofaucets.com/commander)

In order to update the Commander Handheld Unit, download and installation of Renesas Flash Development Toolkit (FDT), Evaluation version (free)\*, is required:

[http://am.renesas.com/products/tools/flash\\_prom\\_programming/fdt/downloads.jsp](http://am.renesas.com/products/tools/flash_prom_programming/fdt/downloads.jsp)

\*Requires PC running Windows 7, 10, XP, and Vista

### UPDATE STEPS

#### 1. Download update files

- 1.1 Download zip package from [www.chicagofaucets.com/commander](http://www.chicagofaucets.com/commander)

**Note:** Zip package includes these files:

- Readme file Readme.txt
- Firmware update file Verxx.xx.xx.fpf4
- Graphics software update file Resource.bin

- 1.2 Unzip files onto your PC

#### 2. Flash programming update

Be sure the Commander device is off and PC audio is not muted!

- 2.1 Connect device to PC via USB cable (supplied)

**Note:**

- If this is the first time the device is connected to a particular PC, you may see a note from Windows saying that it has found new hardware or new USB device is being installed
- If Windows "alert" tone sounds, device is in "programming mode". Go to Step 2.4.

- 2.2 Quick click "on/off button" to activate "Programming mode"

- 2.3 If PC fails to recognize device, or no audio tone is heard:

- Unplug and reconnect Commander device, begin step 2 again OR
- Tap Commander Unit Reset, and begin step 2 again

# Section 1: Introduction, Device, Updates

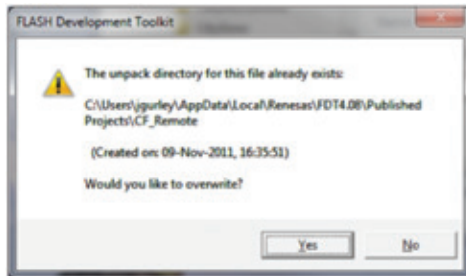
## 1.4 Updating Your Device (Continued)

### UPDATE STEPS

#### 2. Flash programming update (Continued)

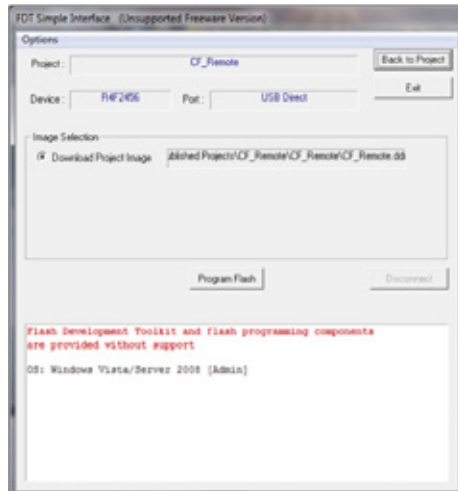
2.4 Run the flash utility - Find and double-click the Verxx.xx.xx.fpf4 file or launch the utility.

**Note:** If you have already performed a prior update you might get the following warning:

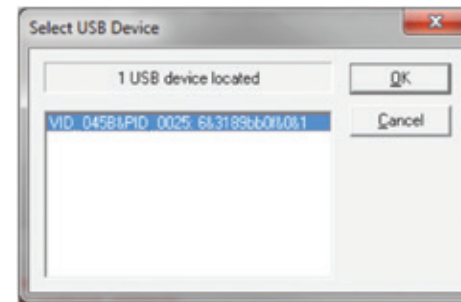


Simply click "Yes" and continue on.

2.5 This window should pop up. Tap the "Program Flash" button.



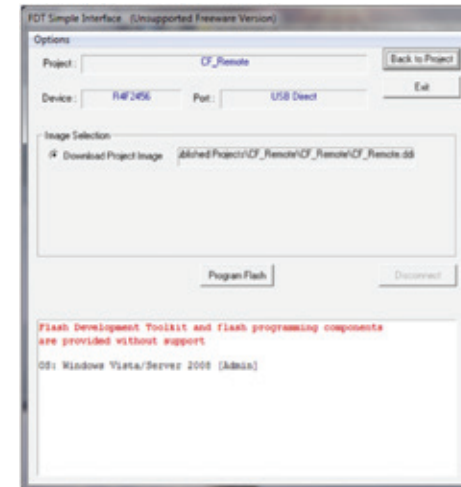
2.6 You will be promoted to Select USB Device. There should only be one VID in the list box as shown.



Simply tap the "OK" button to continue. The device will program.

2.7 Click on the "Disconnect" button to finish.

2.8 Click on the "Exit" button to exit the Flash Development Toolkit.



2.9 Tap "Reset" on Commander Unit. On power up, Commander Unit lands at Calibrate Screen. It's recommended to Calibrate the touch screen after every RESET. See Section 1.3 for more details.

To escape without a Calibration sequence, tap "Cancel".

# Section 1: Introduction, Device, Updates

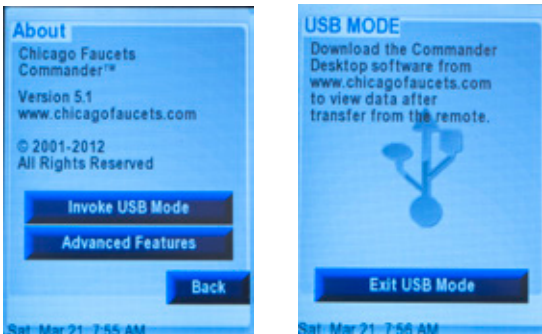
## 1.4 Updating Your Device (Continued)

### UPDATE STEPS

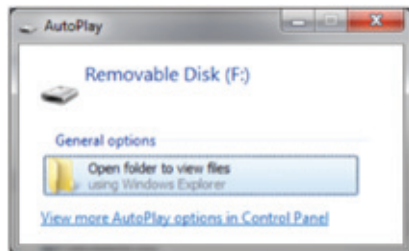
#### 3. Update the Resource.bin file

- 3.1. Connect device to PC via USB cable if not already connected (supplied)
- 3.2. Power on Commander Unit
- 3.3. Tap “About” and then tap “Invoke USB Mode”

**Note:** Auto-Sleep does not function when Commander HPU is in “USB Mode”.



- 3.4. Commander should be recognized as drive in Windows Explorer. Select “Open folder to view files”. Something like this



**Special Notice:** If this is the first time the device is connected to a particular PC, you may see a note from Windows saying that it has found new hardware or new USB device is being installed.

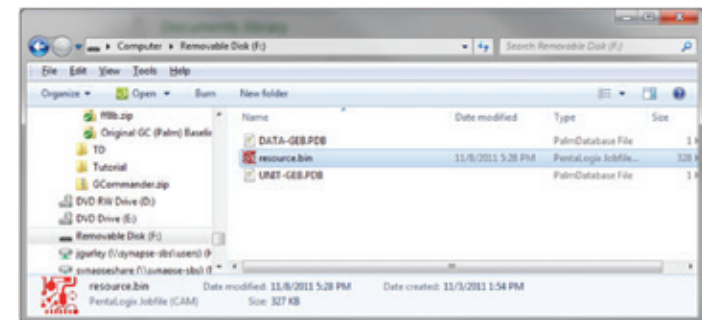
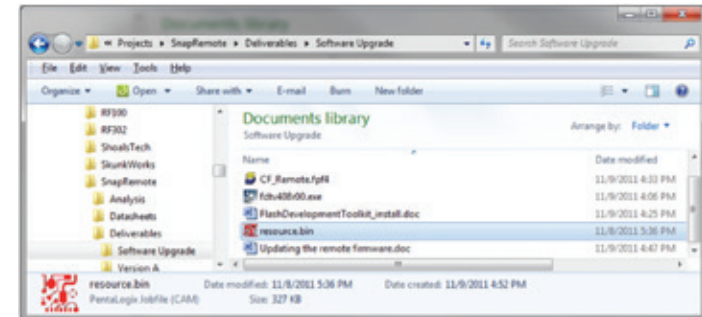
If PC fails to recognize device, unplug and reconnect device, begin step 3 again OR tap Reset, and begin step 2 again.

- 3.5 Find the resource.bin file on your PC. Copy/Paste or drag/drop from the PC to the Commander “Drive”

#### WARNING:

Copy and paste or drag and drop from your PC only!

Cutting or deleting the existing resource.bin file during the update removes all graphical data (text, buttons) from the device. Screen will be completely white, but unit is placed in USB mode. Paste the resource.bin file back to device. Power down and then power up the device. Graphics are restored.



**Note:** Do not be alarmed if you do not see an existing resource.bin file on your Commander device, since the file is normally a Hidden File. To view the file on your Commander Device, select Folder Options and select “view hidden files”.

- 3.6 Disconnect Device from PC. Update complete.