



a Geberit company

2100 South Clearwater Drive
Des Plaines, IL 60018
Phone: 847-803-5000
Fax: 847-803-5454
www.chicagofaucets.com

FOR TECHNICAL ASSISTANCE
1-800-TEC-TRUE (1-800-832-8783)

REPAIR PARTS

BY: SID DATE: 12-12-19

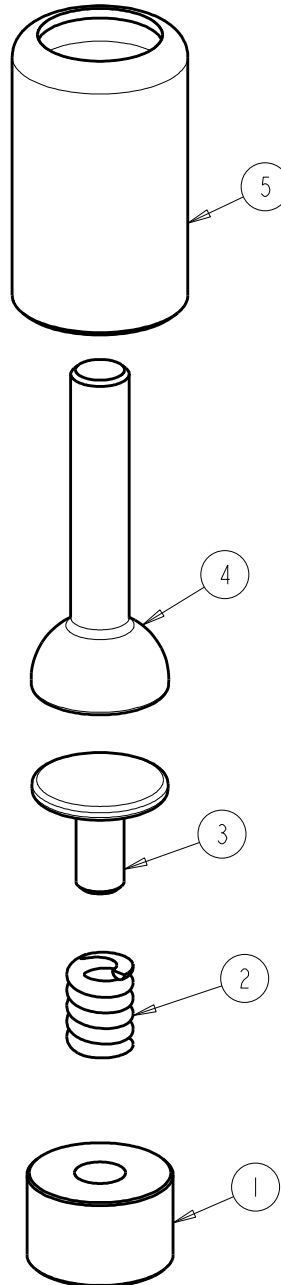
CHK: ~~04~~ REV:

FITTING NO.

386-010JKCP

SUBMITTED MODEL NO.

ITEM NO.



ITEM	PART NO.	DESCRIPTION
1	386-014JKRBF	SLEEVE
2	386-013JKNF	SPRING
3	386-011JKCP	PLUNGER
4	386-009JKCP	HANDLE
5	386-010JKCP	BONNET