

**CHICAGO FAUCETS**  
 a Geberit company

2100 South Clearwater Drive  
 Des Plaines, IL 60018  
 Phone: 847-803-5000  
 Fax: 847-803-5454  
 www.chicagofaucets.com

**FOR TECHNICAL ASSISTANCE**  
 1-800-TEC-TRUE (1-800-832-8783)

**ROUGH-IN**

FITTING NO.

**E36JKABCP**

SUBMITTED MODEL NO.

BY: SID

DATE: 04-16-13

CHK: *[Signature]*

REV:

SUBMITTED AS SHOWN

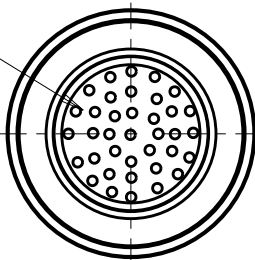
SUBMITTED AS NOTED

SEE ATTACHED FOR  
 SUBMITTED MODIFICATION

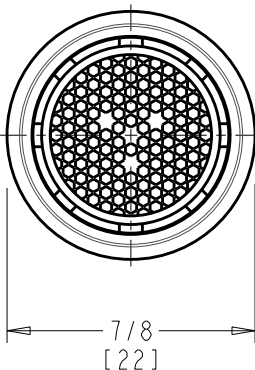
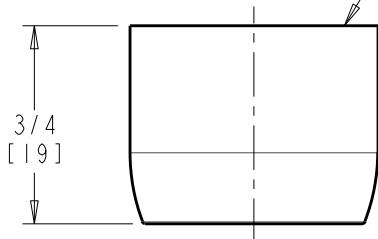
JOB NAME

ITEM NO.

INSERT: 1.5 GPM LAMINAR



13/16-24  
 FEMALE THREAD



DIMENSIONS ARE IN INCHES AND [MILLIMETERS].

**TECHNICAL DATA**

- NON-AERATING LAMINAR OUTLET
- PRESSURE COMPENSATING LAMINAR FLOW
- 1.5 GPM [5.7 L/min.] MAXIMUM FLOW RATE
- FINISH: CHROME PLATE

- ASME A112.18.1/CSA B125.1 COMPLIANT

ROUGHING IN DIMENSIONS MAY VARY AND ARE SUBJECT TO CHANGE. NO RESPONSIBILITY IS ASSUMED FOR USE OF SUPERCEDED OR VOIDED DATA.