

Hygiene, Salon, Mortuary Fittings 778-VBGCP

Product Type

Bed pan cleaner

Features & Specifications

- Handles include color-coded index
- 8" fixed centers
- 48" white vinyl hose assembly
- Male rose spray for use with bed pan cleaner 1.5 GPM
- Vandal Proof 3" cross handle
- Slow compression operating cartridge, left-hand
- Elevated vacuum breaker assembly
- Complies with the requirements of the Buy American Act of 1933.



Performance Specification

- Rated Operating Pressure: 20-125 PSI
- Rated Operating Temperature: 40-140°F

Warranty

- 5-Year Limited Cartridge Warranty
- Lifetime Limited Faucet Warranty
- 1-Year Limited Finish Warranty

Codes & Standards

-  ASME A112.18.1/CSA B125.1
-  ASSE 1001 Certified

Job Name _____

Item Number _____

Section/Tag _____

Model Specified _____

Architect _____

Engineer _____

Contractor _____

☐ Submitted as Shown

☐ Submitted with Variations

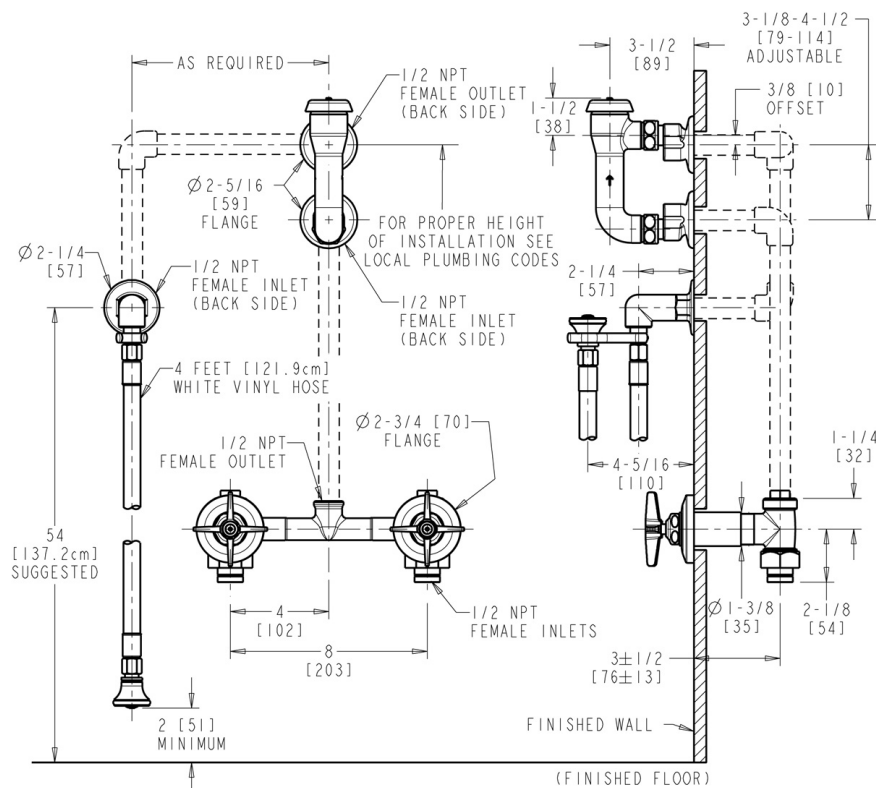
Date _____



Architect/Engineer Specification

Chicago Faucets No. 778-VBGCP, Bed Pan Cleaner, two-handle, wall-mounted, chrome plated. Full-flow male rose spray. 3" metal cross handles with eight-point, tapered broach and secured blue and red index buttons. Slow compression rebuildable cartridge, opens and closes 360° for fine adjustment, closes with water pressure, features square, tapered stem. Includes elevated vacuum breaker assembly. 1/2" NPT female thread union inlets. 48" white vinyl hose. This product is tested and certified to industry standards: ASME A112.18.1/CSA B125.1, and ASSE 1001.

NOTE: ALL DOTTED LINE PIPING
IS 1/2" IPS UNLESS OTHERWISE
SPECIFIED AND SUPPLIED BY OTHERS.



Operation and Maintenance

Installation should be in accordance with local plumbing codes. Flush all pipes thoroughly before installation. After installation, remove spout outlet or flow control and flush faucet thoroughly to clear any debris. Care should be taken when cleaning the product. Do not use abrasive cleaners, chemicals or solvents as they can result in surface damage. Use mild soap and warm water for cleaning and protecting the life of Chicago Faucet products. For specific operation and maintenance refer to the installation instructions and repair parts documents that are located at www.chicagofaucets.com.

Chicago Faucets, member of the Geberit Group, is the leading brand of commercial faucets and fittings in the United States, offering a complete range of products for schools, laboratories, hospitals, office buildings, food service, airports and sport facilities. Call 1.800.TECTRUE or 1.847.803.5000 Option 1 for installation or other technical assistance.

