



a Geberit company

2100 South Clearwater Drive
Des Plaines, IL 60018
Phone: 847-803-5000
Fax: 847-803-5454
www.chicagofaucets.com

FOR TECHNICAL ASSISTANCE
1-800-TEC-TRUE (1-800-832-8783)

REPAIR PARTS

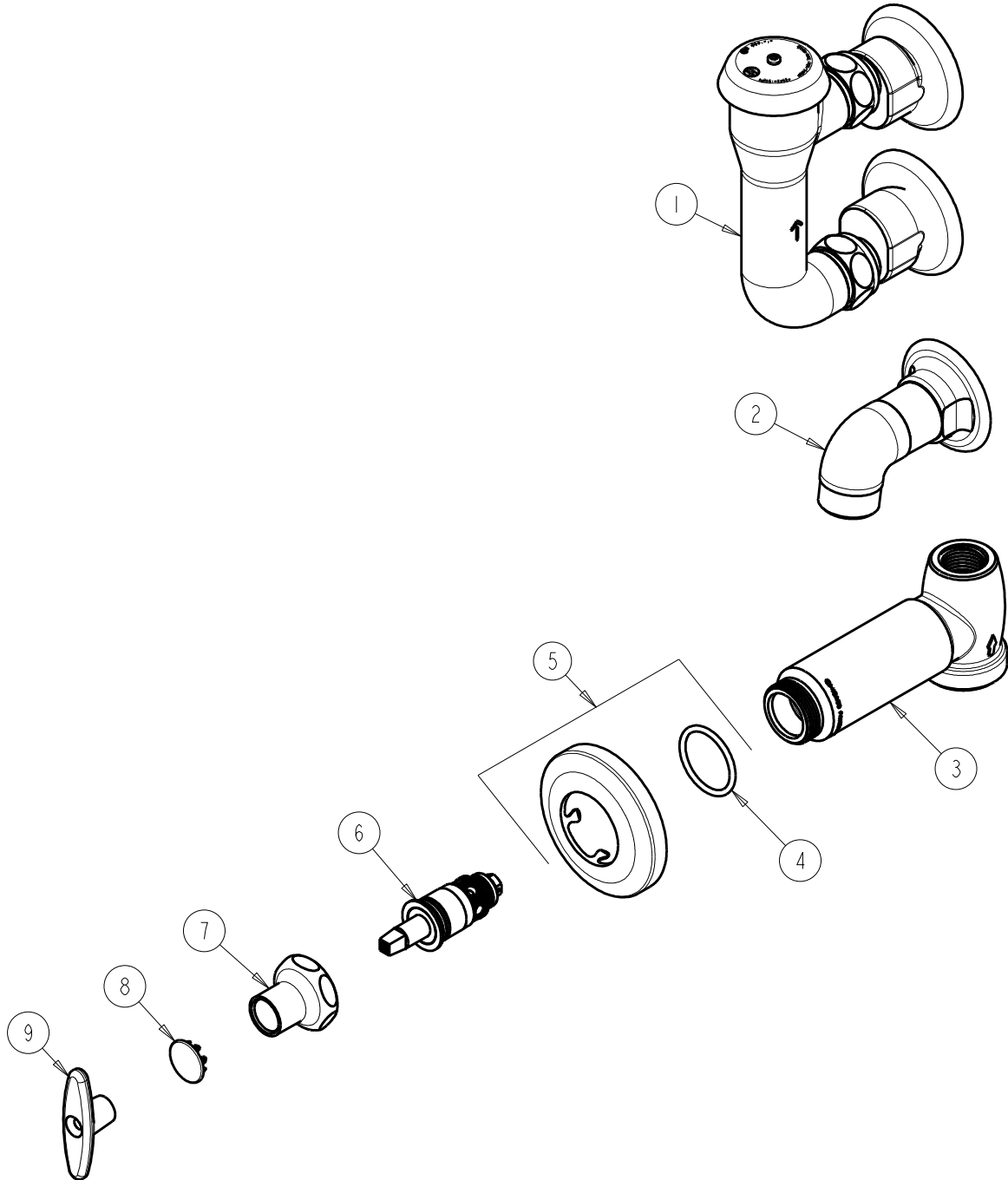
BY: SID DATE: 11-25-02
CHK: *AK* REV: 12-01-16

FITTING NO.

965-CP

SUBMITTED MODEL NO.

ITEM NO.



ITEM	PART NO.	DESCRIPTION	ITEM	PART NO.	DESCRIPTION
1	892-GABCP	ELEVATED VACUUM BREAKER ASSY.	6	217-XTLHJKABNF	CARTRIDGE, SLO-COMPRESSION (LH)
2	781-001JKCP	CAST SPOUT ASSEMBLY	7	1-246JKCP	NUT, CAP LOOSE KEY 1-1/8-18 UNEF
3	-----	VALVE BODY (NOT SODL SEPARATELY)	8	1-144JKCP	BUTTON
4	5235-107JKNF	O-RING	9	293-006JKRCF	TEE HANDLE (INCLUDES SCREW)
5	633-201JKCP	FLANGE & O-RING			