



a Geberit company

2100 South Clearwater Drive  
Des Plaines, IL 60018  
Phone: 847-803-5000  
Fax: 847-803-5454  
www.chicagofaucets.com

# REPAIR PARTS

BY: SID DATE: 09-28-09

CHK: *[Signature]* REV: 10-21-14

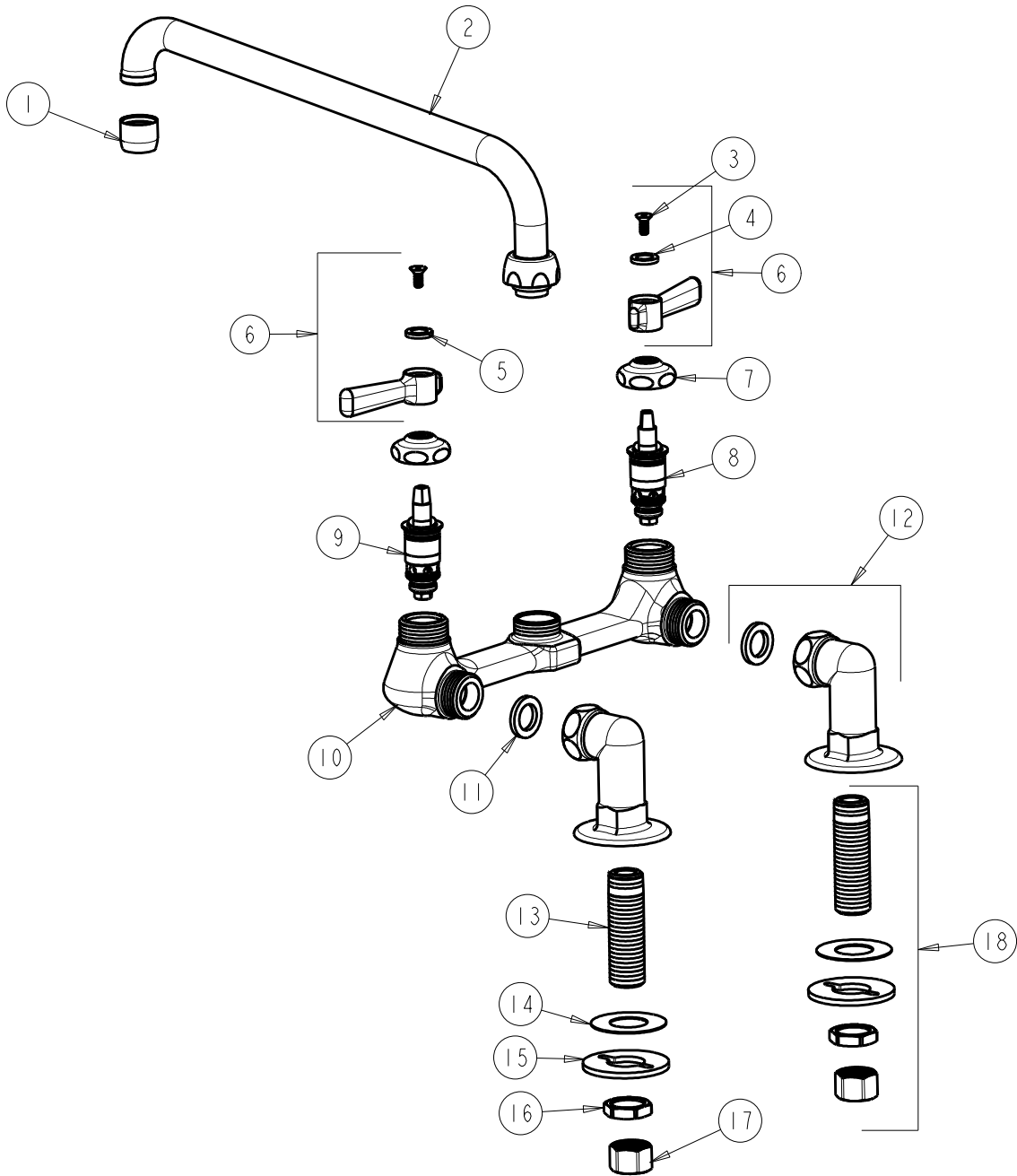
FITTING NO.

946-L12-369CP

SUBMITTED MODEL NO.

ITEM NO.

**FOR TECHNICAL ASSISTANCE**  
1-800-TEC-TRUE (1-800-832-8783)



ITEM	PART NO.	DESCRIPTION	ITEM	PART NO.	DESCRIPTION
1	E3JKABCP	SOFTFLO AERATOR 2.2 GPM	11	1-011JKABNF	WASHER, .97 X .62 X .12
2	L12LEOJKAB	SPOUT, 12" C-C	12	SSJKABCP	ANGLE SHANK ASSEMBLY w/ WASHER
3	420-020JKNF	SCREW, 1/8 FLAT HEX HEAD X 1/2	13	748-002JKABRBF	INLET SHANK 1/2-NPSM
4	633-023JKNF	INDEX BUTTON (RED)	14	333-103JKNF	RUBBER WASHER
5	633-123JKNF	INDEX BUTTON (BLUE)	15	807-112JKNF	WASHER
6	369-PRJKCP	HANDLE, 2-3/8" LEVER (PAIR)	16	49-004JKRBF	LOCKNUT
7	1-214JKCP	CAP	17	49-005JKRBF	COUPLING NUT
8	1-100XTJKABNF	QUATURN CARTRIDGE (LH)	18	748-002KJKABRBF	SHANK ASSEMBLY
9	1-099XTJKABNF	QUATURN CARTRIDGE (RH)			
10	----	VALVE BODY (NOT SOLD SEPARATELY)			