

PARTS LIST

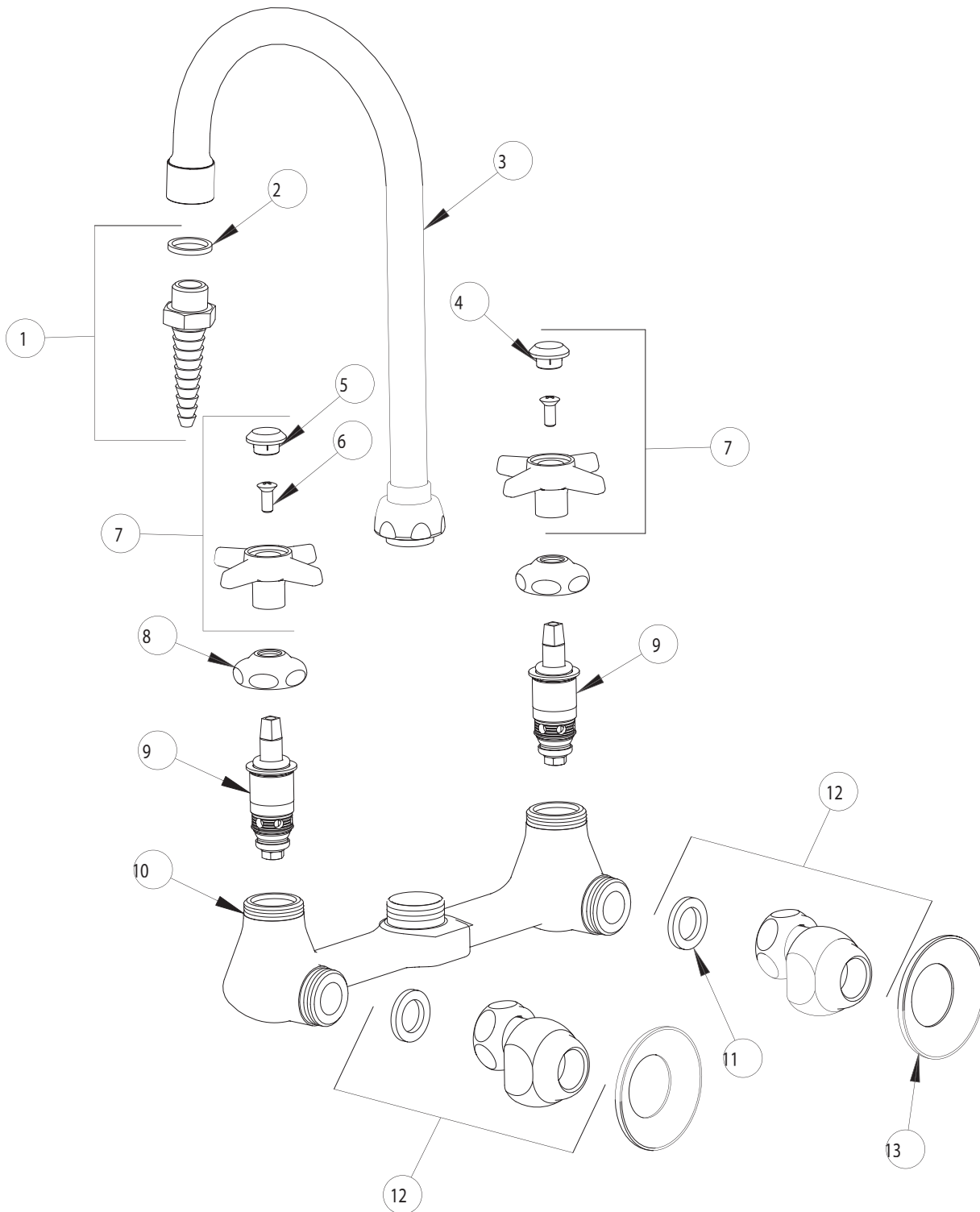
BY: SID
CHK'D:



FINISH:
DATE:

AS SPECIFIED
10-29-01

942



ITEM NO.	PART NO.	DESCRIPTION	ITEM NO.	PART NO.	DESCRIPTION
1	E7	LAB NOZZLE OUTLET	8	1-214	CAP
2	229-003	WASHER	9	217XTLH	SLO-COMPRESSION UNIT (LH)
3	GN2B	FOR PARTS SEE GN2B	10	-----	VALVE BODY (NOT SOLD SEPARATELY)
4	216-128	'HW' INDEX BUTTON	11	1-011	WASHER
5	216-178	'CW' INDEX BUTTON	12	G	'G' ARM (INCLUDES WASHER)
6	420-010	SCREW	13	1-055	FLANGE
7	204PR	4-ARM HANDLE ASSEMBLY			