



a Geberit company

2100 South Clearwater Drive
Des Plaines, IL 60018
Phone: 847-803-5000
Fax: 847-803-5454
www.chicagofaucets.com

REPAIR PARTS

BY: SID DATE: 10-29-01

CHK: *[Signature]* REV: 10-21-14

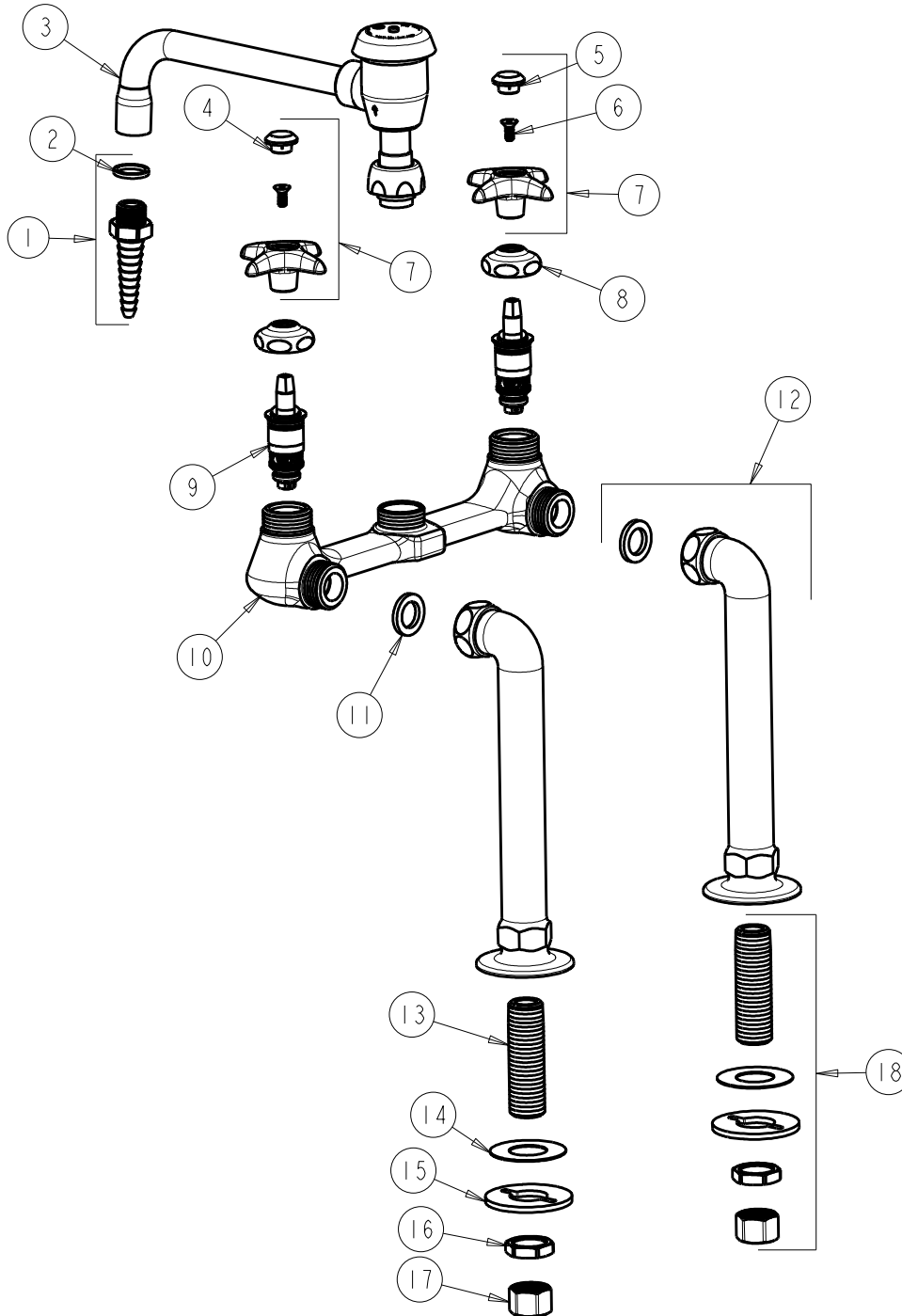
FITTING NO.

941-VBE7CP

SUBMITTED MODEL NO.

ITEM NO.

FOR TECHNICAL ASSISTANCE
1-800-TEC-TRUE (1-800-832-8783)



ITEM	PART NO.	DESCRIPTION	ITEM	PART NO.	DESCRIPTION
1	E7JKCP	SERRATED HOSE NOZZLE	10	----	VALVE BODY (NOT SOLD SEPARATELY)
2	229-003JKABNF	WASHER	11	1-011JKABNF	WASHER, .97 X .62 X .12
3	L8BVBJKABCP	VACUUM BREAKER SWING SPOUT	12	LSJKABCP	TALL ANGLE INLET SUPPLY ARM
4	216-178JKNF	BUTTON 'CW'	13	748-002JKABRBF	INLET SHANK 1/2-NPSM
5	216-128JKNF	BUTTON 'HW'	14	333-103JKNF	RUBBER WASHER
6	420-020JKNF	SCREW, 1/8 FLAT HEX HEAD X 1/2	15	807-112JKNF	WASHER
7	204-PRJKCP	HANDLE ASSEMBLY (PAIR)	16	49-004JKRBF	LOCKNUT
8	1-214JKCP	CAP	17	49-005JKRBF	COUPLING NUT
9	217-XTLHJKABNF	CARTRIDGE, SLO-COMPRESSION (LH)	18	748-002KJKABRBF	SHANK ASSEMBLY