

CHICAGO FAUCETS
a Geberit company

2100 South Clearwater Drive
Des Plaines, IL 60018
Phone: 847-803-5000
Fax: 847-803-5454
www.chicagofaucets.com

REPAIR PARTS

FITTING NO.

930-GN8BVB317CP

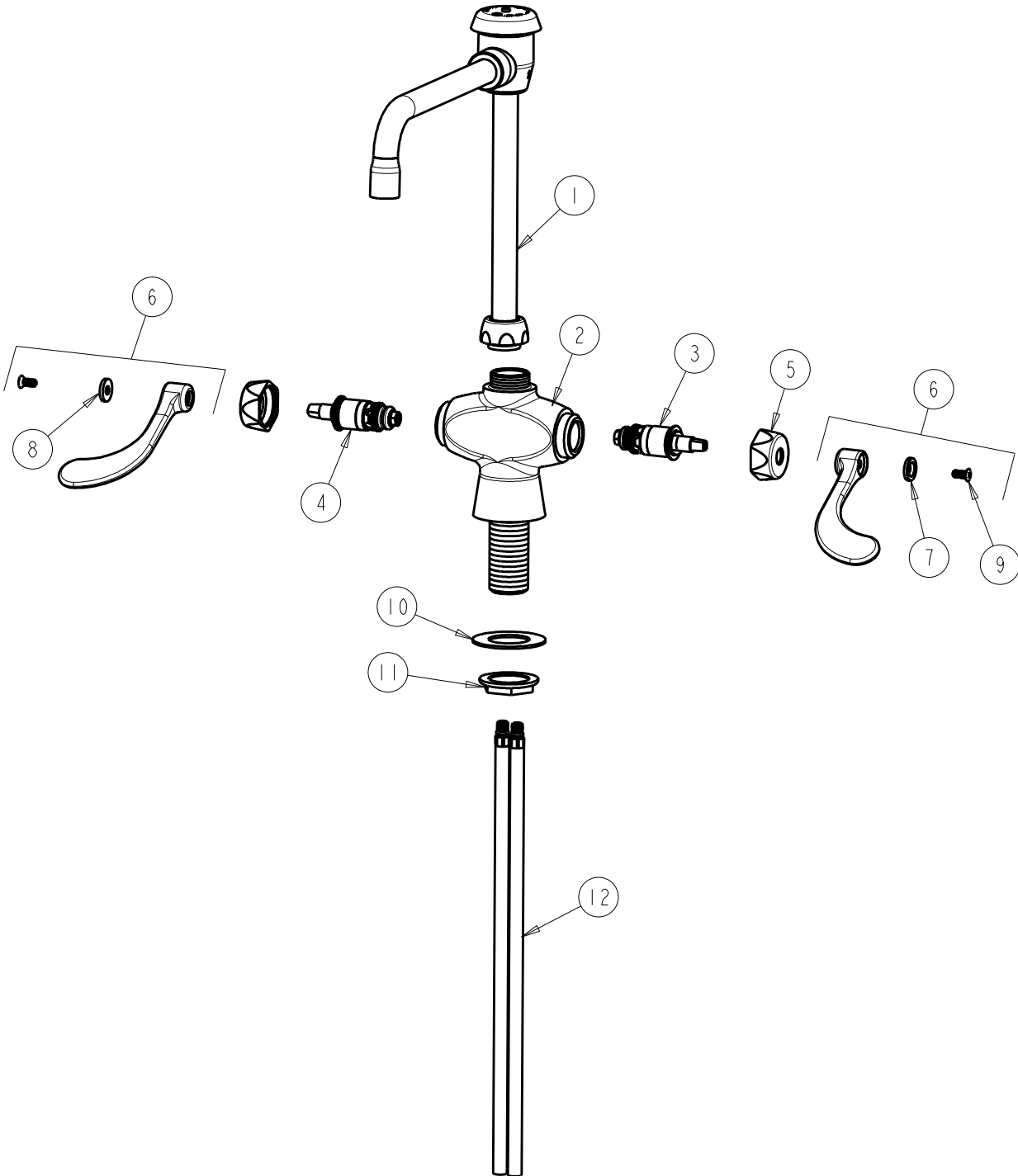
SUBMITTED MODEL NO.

ITEM NO.

BY: SID DATE: 10-24-11

CHK: *[Signature]* REV:

FOR TECHNICAL ASSISTANCE
1-800-TEC-TRUE (1-800-832-8783)



ITEM	PART NO.	DESCRIPTION	ITEM	PART NO.	DESCRIPTION
1	GN8BVBKCP	VACUUM BREAKER SWING SPOUT	7	633-123JKNF	INDEX BUTTON (BLUE)
2	---	VALVE BODY (NOT SOLD SEPARATELY)	8	633-023JKNF	INDEX BUTTON (RED)
3	1-099XTJKNF	QUATURN CARTRIDGE (RH)	9	420-010JKRCF	SCREW, 10-32 UNC PH 1/2
4	1-100XTJKNF	QUATURN CARTRIDGE (LH)	10	50-014JKNF	STEEL WASHER
5	444-005JKCP	CAP	11	50-003JKRBF	LOCKNUT
6	317-PRJKCP	HANDLE, 4" WRISTBLADE (PAIR)	12	50-101KJKNF	SUPPLY TUBE ASSEMBLY