

CHICAGO FAUCETS
a Geberit company

2100 South Clearwater Drive
Des Plaines, IL 60018
Phone: 847-803-5000
Fax: 847-803-5454
www.chicagofaucets.com

REPAIR PARTS

FITTING NO.

928-VRE3-2CP

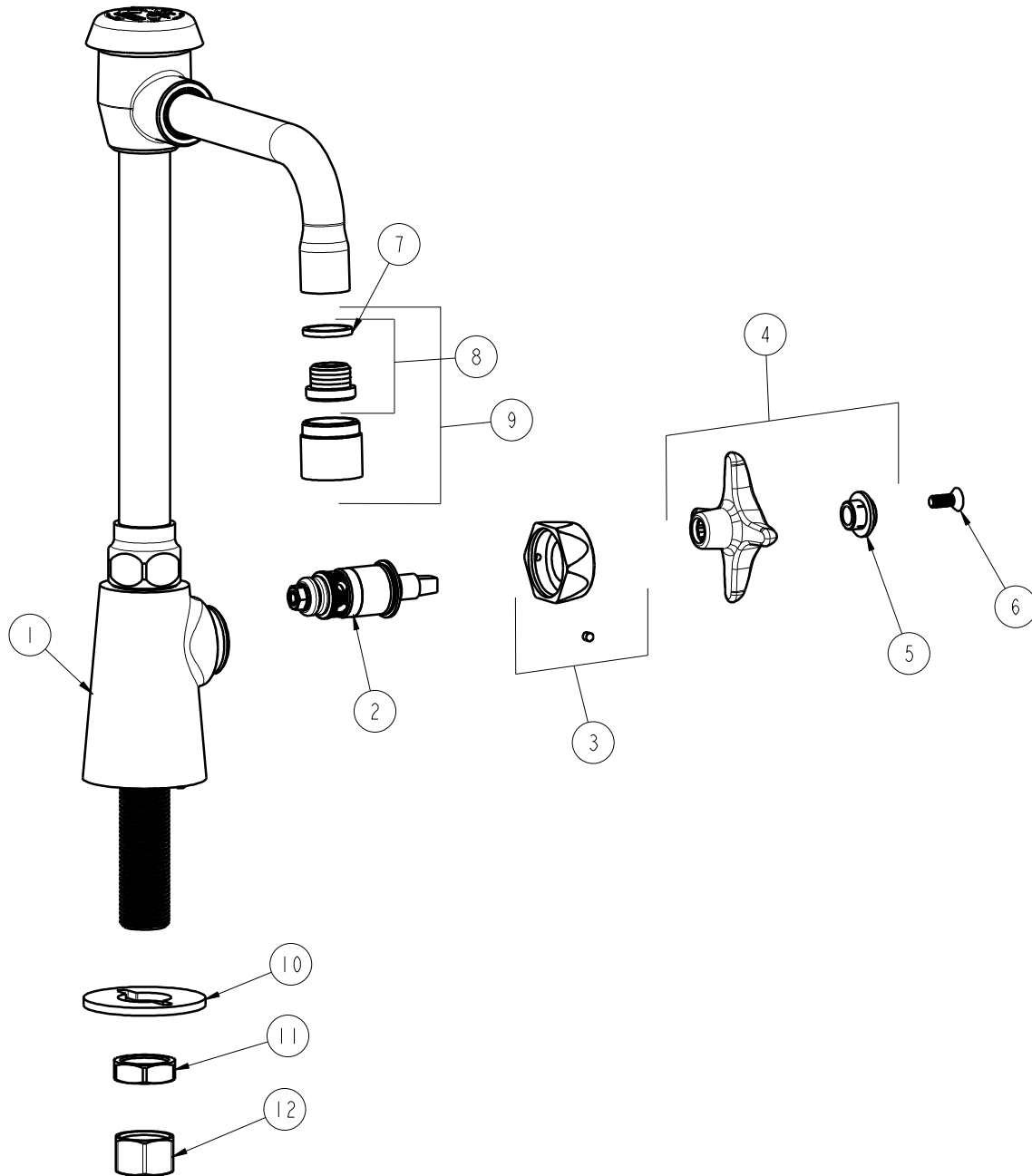
SUBMITTED MODEL NO.

ITEM NO.

BY: SID DATE: 03-17-09

CHK: *[Signature]* REV:

FOR TECHNICAL ASSISTANCE
1-800-TEC-TRUE (1-800-832-8783)



ITEM	PART NO.	DESCRIPTION	ITEM	PART NO.	DESCRIPTION
1	-----	BODY VALVE (NOT SOLD SEPARATELY)	7	229-003JKNF	WASHER
2	217-XTLHJKNF	CARTRIDGE, SLO-COMPRESSION	8	K2JKRCF	ADAPTER
3	444-105JKCP	VP CAP NUT WITH VR SCREW	9	E3-2VPJKCP	V.R. SOFTFLO AERATOR w/ADAPTER
4	204-CWJKCP	HANDLE ASSEMBLY (CW)	10	807-112JKNF	WASHER
5	216-178JKNF	BUTTON 'CW'	11	49-004JKRBF	LOCKNUT
6	420-020JKNF	SCREW, 1/8 FLAT HEX HEAD X 1/2	12	49-005JKRBF	COUPLING NUT