



a Geberit company

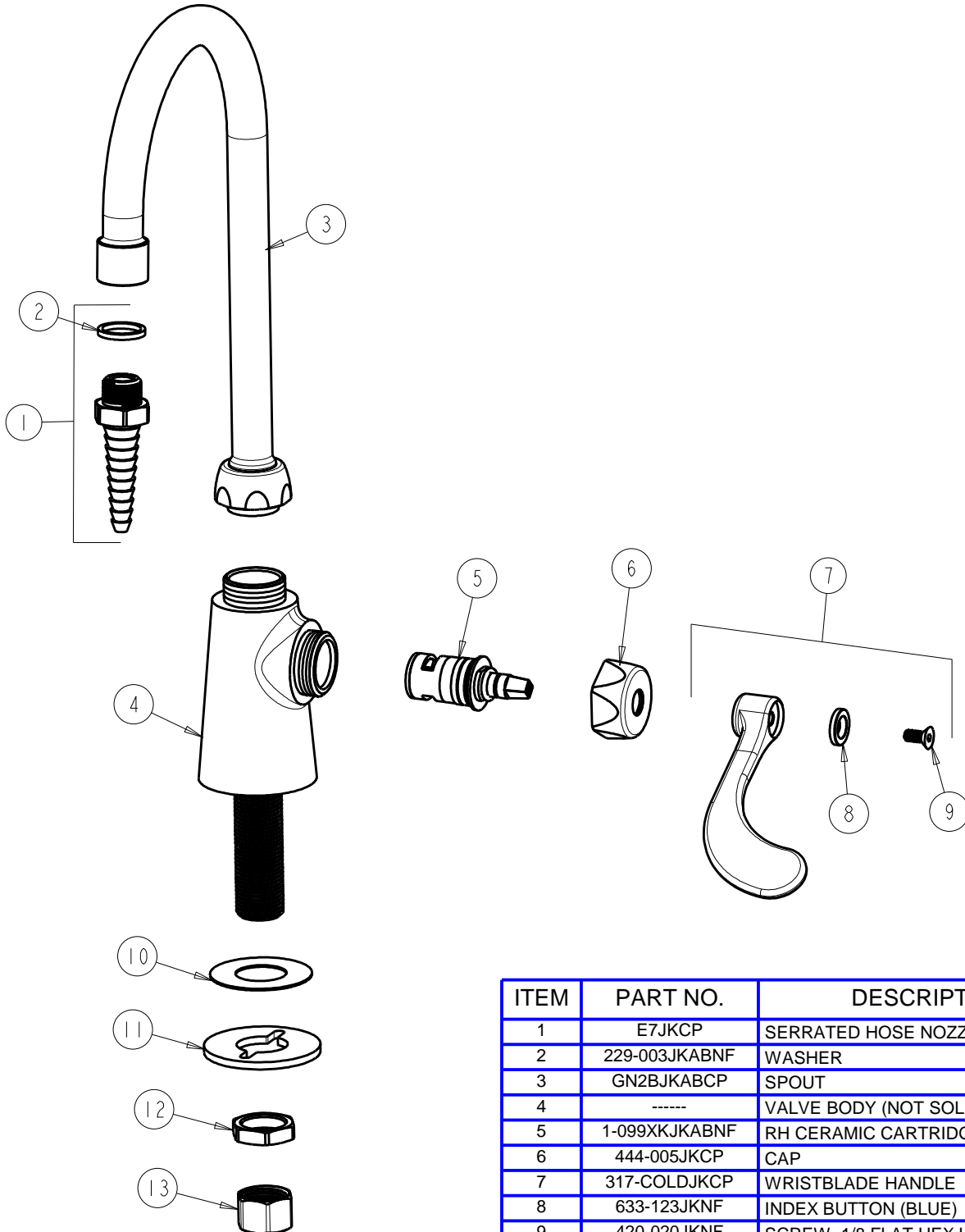
2100 South Clearwater Drive
Des Plaines, IL 60018
Phone: 847-803-5000
Fax: 847-803-5454
www.chicagofaucets.com

FOR TECHNICAL ASSISTANCE
1-800-TEC-TRUE (1-800-832-8783)

REPAIR PARTS

BY: SID DATE: 05-21-12
CHK: *[Signature]* REV: 10-20-14

FITTING NO.	927-317XKCP
SUBMITTED MODEL NO.	
ITEM NO.	



ITEM	PART NO.	DESCRIPTION
1	E7JKCP	SERRATED HOSE NOZZLE
2	229-003JKABNF	WASHER
3	GN2BJKABCP	SPOUT
4	-----	VALVE BODY (NOT SOLD SEPARATELY)
5	1-099XKJKABNF	RH CERAMIC CARTRIDGE 1/4
6	444-005JKCP	CAP
7	317-COLDJKCP	WRISTBLADE HANDLE
8	633-123JKNF	INDEX BUTTON (BLUE)
9	420-020JKNF	SCREW, 1/8 FLAT HEX HEAD X 1/2
10	333-103JKNF	RUBBER WASHER
11	807-112JKNF	WASHER
12	49-004JKRBF	LOCKNUT
13	49-005JKRBF	COUPLING NUT