



a Geberit company

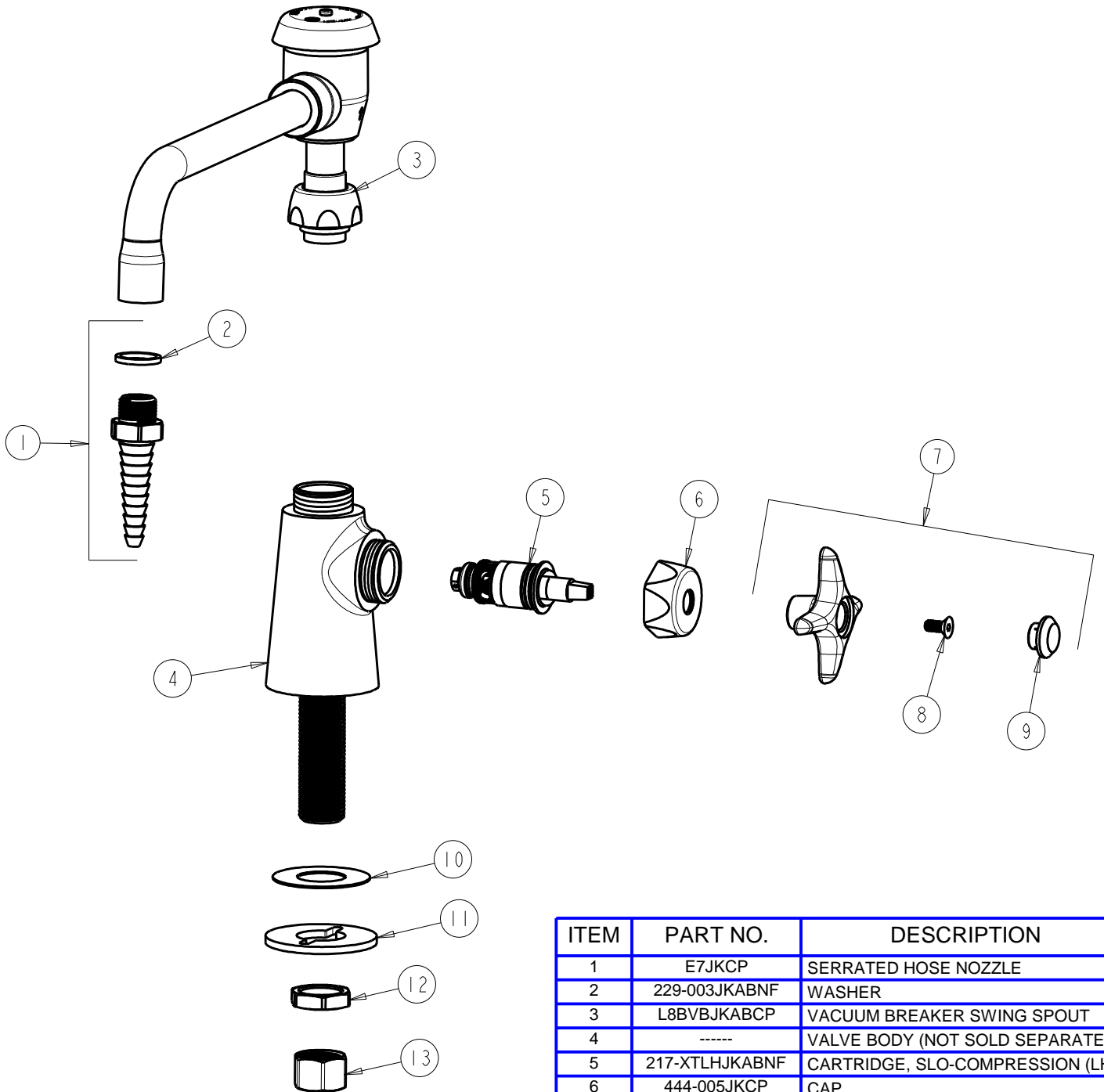
FOR TECHNICAL ASSISTANCE
 1-800-TEC-TRUE (1-800-832-8783)

2100 South Clearwater Drive
 Des Plaines, IL 60018
 Phone: 847-803-5000
 Fax: 847-803-5454
 www.chicagofaucets.com

REPAIR PARTS

BY: SID DATE: 04-16-09
 CHK: *[Signature]* REV: 10-20-14

FITTING NO.	926-VBE7CP
SUBMITTED MODEL NO.	
ITEM NO.	



ITEM	PART NO.	DESCRIPTION
1	E7JKCP	SERRATED HOSE NOZZLE
2	229-003JKABNF	WASHER
3	L8BVBJKABCP	VACUUM BREAKER SWING SPOUT
4	-----	VALVE BODY (NOT SOLD SEPARATELY)
5	217-XTLHJKABNF	CARTRIDGE, SLO-COMPRESSION (LH)
6	444-005JKCP	CAP
7	204-CWJKCP	HANDLE ASSEMBLY
8	420-020JKNF	SCREW, 1/8 FLAT HEX HEAD X 1/2
9	216-178JKNF	BUTTON 'CW'
10	333-103JKNF	RUBBER WASHER
11	807-112JKNF	WASHER
12	49-004JKRBF	LOCKNUT
13	49-005JKRBF	COUPLING NUT