

CHICAGO FAUCETS
a Geberit company

2100 South Clearwater Drive
Des Plaines, IL 60018
Phone: 847-803-5000
Fax: 847-803-5454
www.chicagofaucets.com

REPAIR PARTS

FITTING NO.

923-TFWSLCP

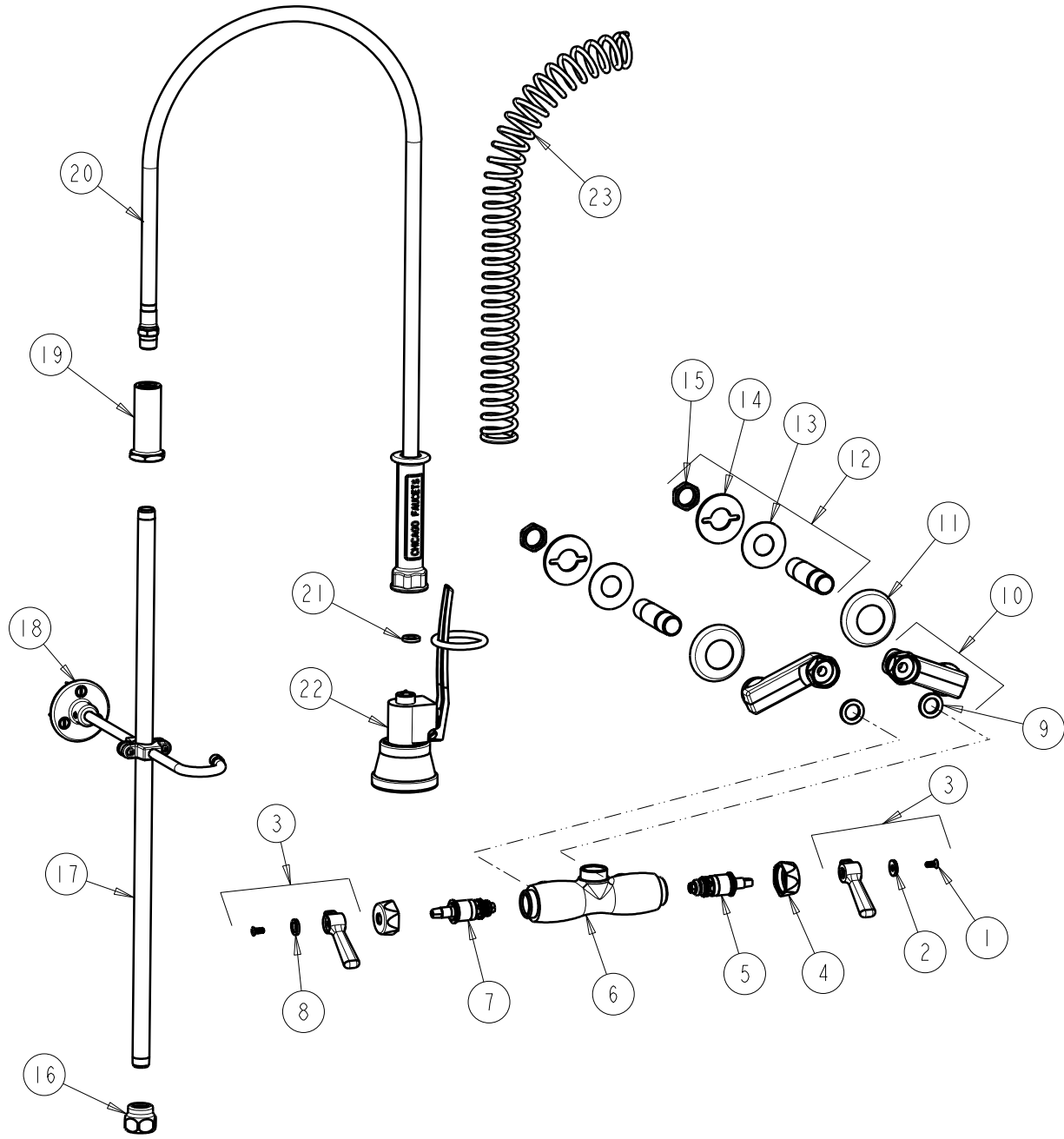
SUBMITTED MODEL NO.

ITEM NO.

FOR TECHNICAL ASSISTANCE
1-800-TEC-TRUE (1-800-832-8783)

BY: SID DATE: 07-20-10

CHK: *[Signature]* REV: 07-28-10



| ITEM | PART NO. | DESCRIPTION | ITEM | PART NO. | DESCRIPTION |
|------|---------------|----------------------------------|------|-------------|----------------------------------|
| 1 | 420-010JKRCF | SCREW, 10-32 UNC PH 1/2 | 13 | 52-007JKNF | WASHER, RUBBER |
| 2 | 633-123JKNF | INDEX BUTTON (BLUE) | 14 | 807-112JKNF | WASHER |
| 3 | 369-PRJKCP | LEVER HANDLE ASSEMBLY (PAIR) | 15 | 49-004JKRBF | LOCKNUT |
| 4 | 444-005JKCP | CAP | 16 | BA2JKCP | ADAPTER 3/8 NPT X 1 1/16-18 UNEF |
| 5 | 1-099XTJKNF | QUATURN UNIT (RH) | 17 | 919-039JKCP | 3/8" NPT X 23" RISER |
| 6 | ----- | VALVE BODY (NOT SOLD SEPARATELY) | 18 | 902-MHJKCP | PIPE STRAP AND HOOK ASSEMBLY |
| 7 | 1-100XTJKNF | QUATURN UNIT (LH) | 19 | 919-038JKCP | GUIDE SHANK |
| 8 | 633-023JKNF | INDEX BUTTON (RED) | 20 | 83-44NF | HOSE AND HANDLE ASSEMBLY |
| 9 | 1-011JKNF | WASHER, .97 X .62 X .12 | 21 | 919-243JKNF | GASKET, .685 X .375 X .125 |
| 10 | HJKCP | 'H' ARM ASSEMBLY w/WASHER | 22 | 99TF | TRIPLE FORCE PRE-RINSE VALVE |
| 11 | 1-055JKCP | FLANGE | 23 | 919-014JKCP | SPRING |
| 12 | 932-001KJKRBF | INLET SHANK ASSEMBLY | | | |