

CHICAGO FAUCETS
a Geberit company

2100 South Clearwater Drive
Des Plaines, IL 60018
Phone: 847-803-5000
Fax: 847-803-5454
www.chicagofaucets.com

REPAIR PARTS

FITTING NO.

923-GCLVB204WSAB

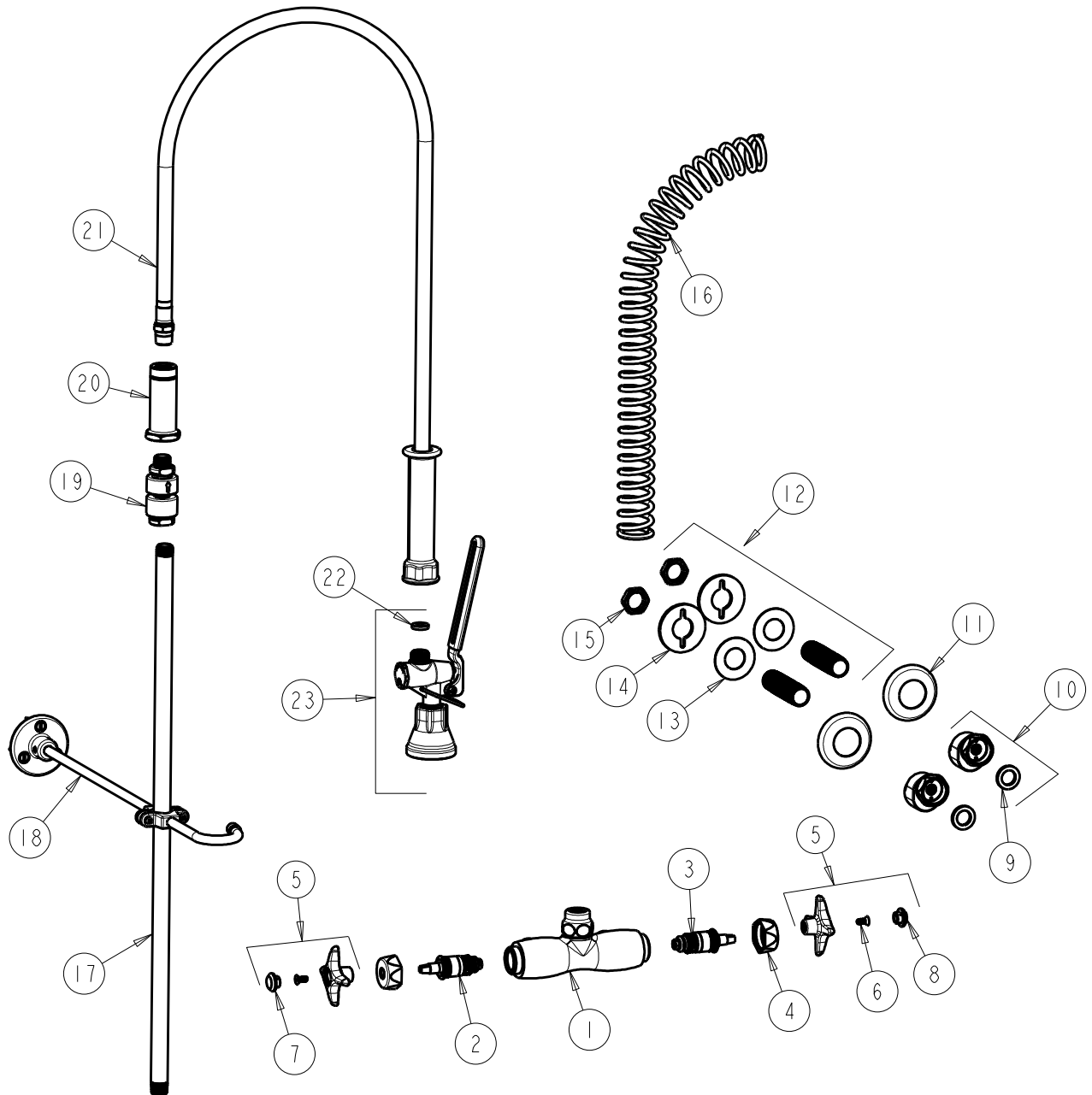
SUBMITTED MODEL NO.

ITEM NO.

BY: SID DATE: 08-19-15

CHK: *AK* REV:

FOR TECHNICAL ASSISTANCE
1-800-TEC-TRUE (1-800-832-8783)



| ITEM | PART NO. | DESCRIPTION | ITEM | PART NO. | DESCRIPTION |
|------|-----------------|----------------------------------|------|---------------|------------------------------|
| 1 | ----- | VALVE BODY (NOT SOLD SEPARATELY) | 13 | 333-103JKNF | RUBBER WASHER |
| 2 | 217-XTLHJKABNF | CARTRIDGE, SLO-COMPRESSION (LH) | 14 | 807-112JKNF | WASHER |
| 3 | 217-XTRHJKABNF | CARTRIDGE, SLO-COMPRESSION (RH) | 15 | 49-004JKRBF | LOCKNUT |
| 4 | 444-005JKCP | CAP | 16 | 919-014JKCP | SPRING |
| 5 | 204-PRJKCP | HANDLE, 4 ARM (PAIR) | 17 | 919-039JKABCP | 3/8" NPT X 23" RISER |
| 6 | 420-020JKNF | SCREW, 1/8 FLAT HEX HEAD X 1/2 | 18 | 902-MHJKCP | PIPE STRAP AND HOOK ASSEMBLY |
| 7 | 216-128JKNF | BUTTON 'HW' | 19 | E23JKABCP | BACK-FLOW PREVENTER |
| 8 | 216-178JKNF | BUTTON 'CW' | 20 | 919-038JKABCP | GUIDE SHANK |
| 9 | 1-011JKABNF | WASHER, .97 X .62 X .12 | 21 | 83-44ABNF | 44" HOSE AND HANDLE ASSEMBLY |
| 10 | GCJKABCP | ARM ASSEMBLY 'GC' WITH WASHER | 22 | 919-243JKABNF | GASKET, .685 X .375 X .125 |
| 11 | 1-055JKCP | FLANGE | 23 | 90-LABCP | PRE-RINSE VALVE, LOW FLOW |
| 12 | 932-001KJKABRBF | INLET SHANK ASSEMBLY | | | |