

**CHICAGO FAUCETS**  
a Geberit company

2100 South Clearwater Drive  
Des Plaines, IL 60018  
Phone: 847-803-5000  
Fax: 847-803-5454  
www.chicagofaucets.com

**REPAIR PARTS**

FITTING NO.

**919-TFCP**

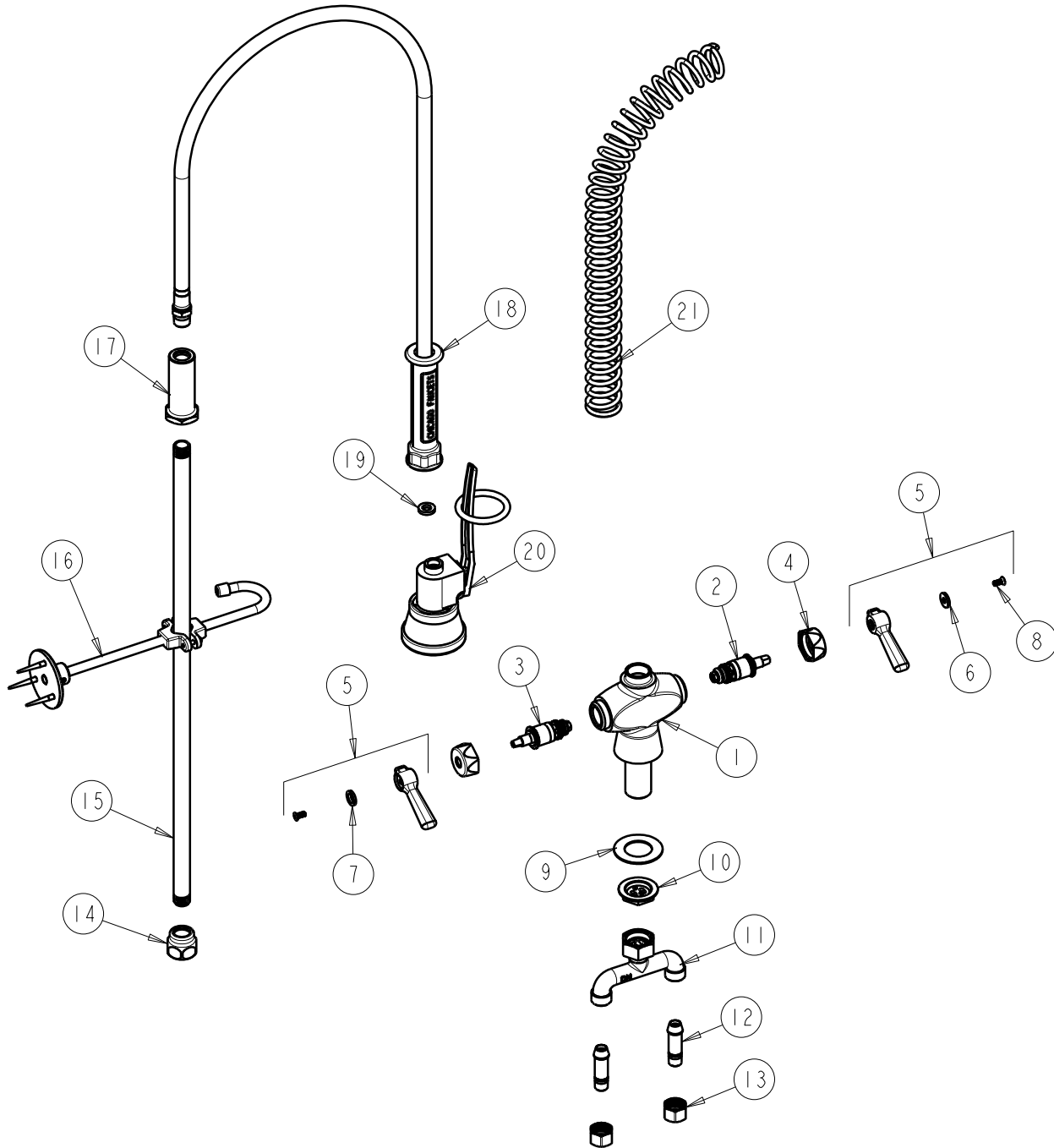
SUBMITTED MODEL NO.

ITEM NO.

**FOR TECHNICAL ASSISTANCE**  
1-800-TEC-TRUE (1-800-832-8783)

BY: SID DATE: 07-20-10

CHK: *[Signature]* REV: 07-28-10



ITEM	PART NO.	DESCRIPTION	ITEM	PART NO.	DESCRIPTION
1	—	VALVE BODY NOT SOLD SEPARATELY	12	58-018KJKRBF	TAIL PIECE ASSEMBLY
2	1-099XTJKNF	QUATURN UNIT (RH)	13	49-005JKRBF	COUPLING NUT
3	1-100XTJKNF	QUATURN UNIT (LH)	14	BA2JKCP	ADAPTER 3/8 NPT X 1 1/16-18 UNEF
4	444-005JKCP	CAP	15	919-039JKCP	RISER 3/8" X 23"
5	369-PRJKCP	LEVER HANDLE ASSEMBLY (PAIR)	16	902-MHJKCP	PIPE STRAP AND HOOK ASSEMBLY
6	633-123JKNF	INDEX BUTTON (BLUE)	17	919-038JKCP	GUIDE SHANK
7	633-023JKNF	INDEX BUTTON (RED)	18	83-44NF	HOSE & HANDLE
8	420-010JKRCF	SCREW, 10-32 UNC PH 1/2	19	919-243JKNF	GASKET, .685 X .375 X .125
9	50-014JKNF	STEEL WASHER	20	99TF	TRIPLE FORCE PRE-RINSE VALVE
10	50-003JKRBF	LOCKNUT	21	919-014JKCP	SPRING
11	50-010KJKRBF	CONNECTION ASSEMBLY			