

**CHICAGO FAUCETS**  
a Geberit company

2100 South Clearwater Drive  
Des Plaines, IL 60018  
Phone: 847-803-5000  
Fax: 847-803-5454  
www.chicagofaucets.com

**REPAIR PARTS**

FITTING NO.

**919-TF613ACP**

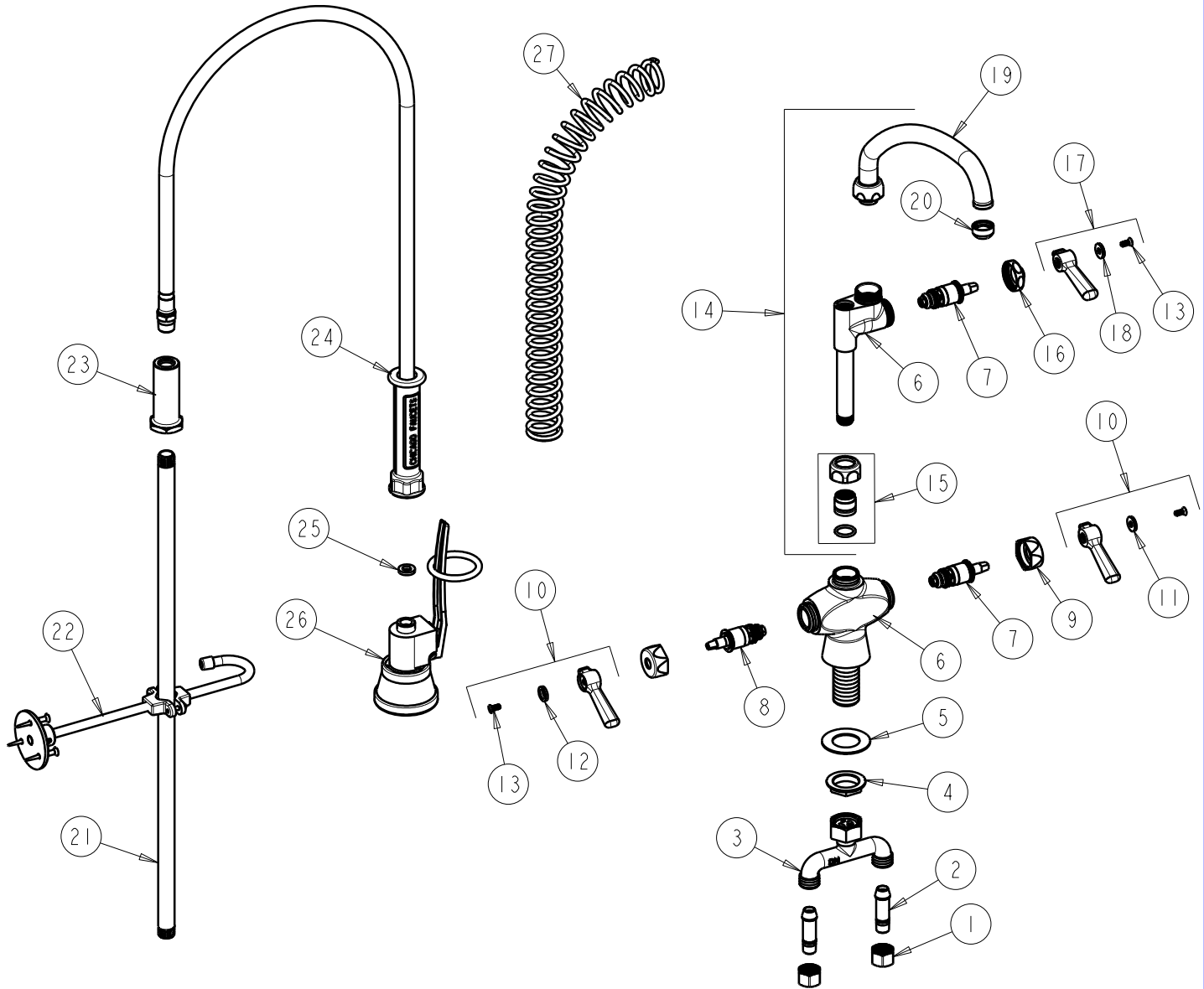
SUBMITTED MODEL NO.

ITEM NO.

BY: SID DATE: 07-20-10

CHK: *[Signature]* REV: 07-28-10

**FOR TECHNICAL ASSISTANCE**  
1-800-TEC-TRUE (1-800-832-8783)



ITEM	PART NO.	DESCRIPTION	ITEM	PART NO.	DESCRIPTION
1	49-005JKRBF	COUPLING NUT	15	143-PPJKNF	PRE-PACK
2	58-018KJKRBF	TAIL PIECE ASSEMBLY	16	1-214JKCP	CAP
3	50-010KJKRBF	CONNECTION ASSEMBLY	17	369-PLJKCP	PLAIN LEVER HANDLE
4	50-003JKRBF	LOCKNUT	18	633-223JKNF	INDEX BUTTON (WHITE)
5	50-014JKNF	STEEL WASHER	19	L9LESSE3JKCP	TUBE SPOUT ASSEMBLY
6	---	VALVE BODY NOT SOLD SEPARATELY	20	E1JKRCF	QUIXTOP OUTLET
7	1-099XTJKNF	QUATURN UNIT (RH)	21	919-039JKCP	RISER 3/8" X 23"
8	1-100XTJKNF	QUATURN UNIT (LH)	22	902-MHJKCP	PIPE STRAP AND HOOK ASSEMBLY
9	444-005JKCP	CAP	23	919-038JKCP	GUIDE SHANK
10	369-PRJKCP	LEVER HANDLE ASSEMBLY (PAIR)	24	83-44NF	HOSE & HANDLE
11	633-123JKNF	INDEX BUTTON (BLUE)	25	919-243JKNF	GASKET, .685 X .375 X .125
12	633-023JKNF	INDEX BUTTON (RED)	26	99TF	TRIPLE FORCE PRE-RINSE VALVE
13	420-010JKRCF	SCREW, 10-32 UNC PH 1/2	27	919-014JKCP	SPRING
14	613-ACP	PRE-RINSE ADAPTA FITTING			