

CHICAGO FAUCETS
a Geberit company

2100 South Clearwater Drive
Des Plaines, IL 60018
Phone: 847-803-5000
Fax: 847-803-5454
www.chicagofaucets.com

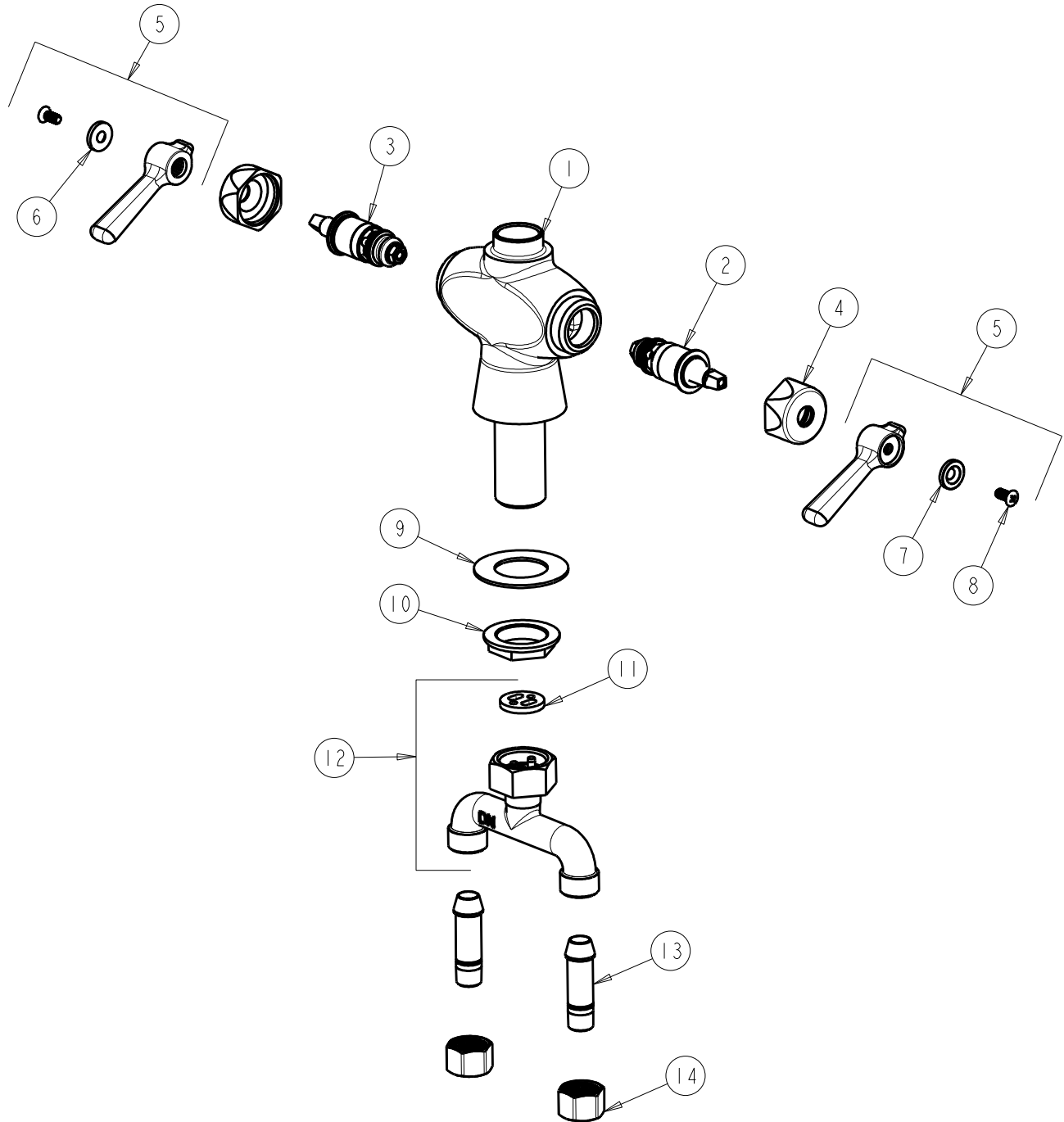
REPAIR PARTS

BY: SID DATE: 11-07-11
CHK: *[Signature]* REV:

FITTING NO.
919-LESS919SCP
SUBMITTED MODEL NO.

ITEM NO.

FOR TECHNICAL ASSISTANCE
1-800-TEC-TRUE (1-800-832-8783)



ITEM	PART NO.	DESCRIPTION	ITEM	PART NO.	DESCRIPTION
1	-----	VALVE BODY (NOT SOLD SEPARATELY)	9	50-014JKNF	STEEL WASHER
2	1-099XTJKNF	QUATURN CARTRIDGE (RH)	10	50-003JKRBF	LOCKNUT
3	1-100XTJKNF	QUATURN CARTRIDGE (LH)	11	50-008JKNF	RUBBER WASHER
4	444-005JKCP	CAP	12	50-010KJKRBF	TEE CONNECTION ASSEMBLY
5	369-PRJKCP	LEVER HANDLE ASSEMBLY (PAIR)	13	58-018KJKRBF	TAIL PIECE ASSEMBLY
6	633-023JKNF	INDEX BUTTON (RED)	14	49-005JKRBF	COUPLING NUT
7	633-123JKNF	INDEX BUTTON (BLUE)			
8	420-010JKRCF	SCREW, 10-32 UNC PH 1/2			