



a Geberit company

2100 South Clearwater Drive  
Des Plaines, IL 60018  
Phone: 847-803-5000  
Fax: 847-803-5454  
www.chicagofaucets.com

# REPAIR PARTS

BY: JAR DATE: 11-30-06

CHK: *[Signature]* REV: 08-05-14

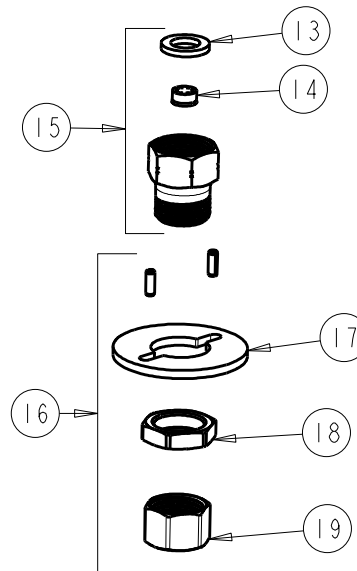
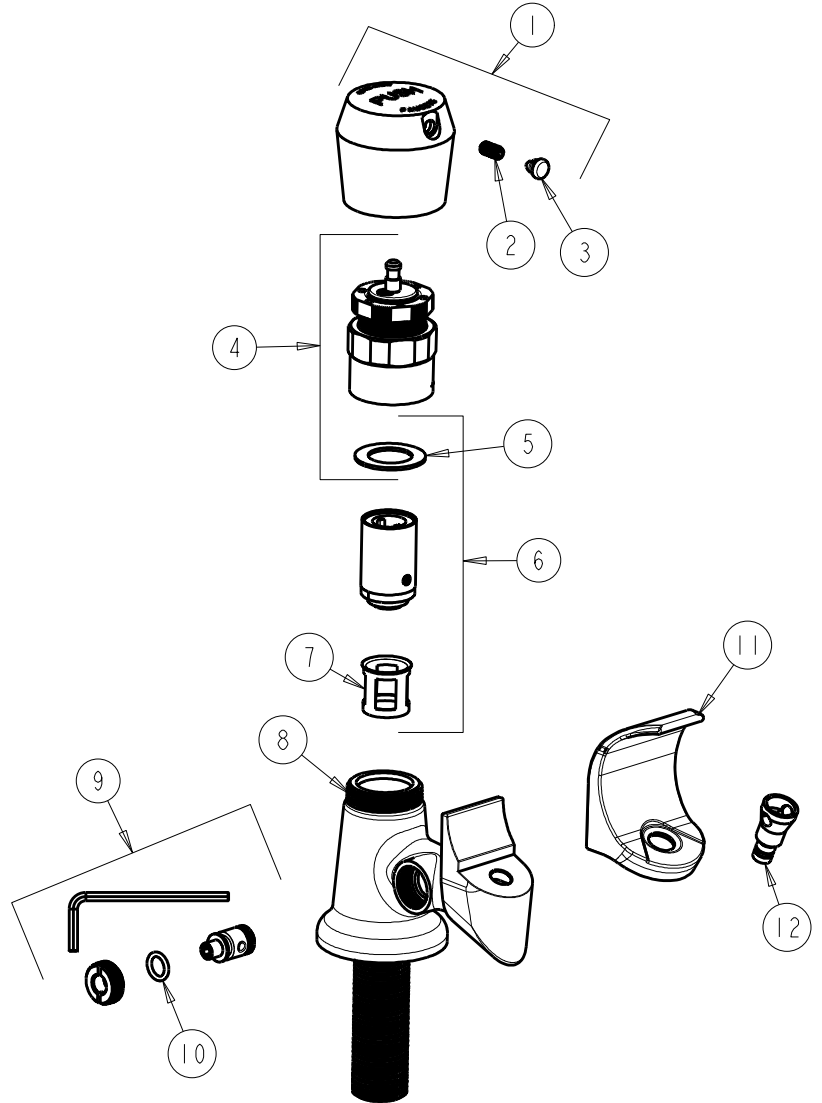
FITTING NO.

748-665FHABCP

SUBMITTED MODEL NO.

ITEM NO.

**FOR TECHNICAL ASSISTANCE**  
1-800-TEC-TRUE (1-800-832-8783)



ITEM	PART NO.	DESCRIPTION
1	665-PSHJKCP	HANDLE, PUSH CAP
2	665-116JKNF	SET SCREW
3	665-309KJKNF	BUTTONS, HOT AND COLD
4	665-190KJKABNF	ACTUATOR ASSEMBLY
5	665-011JKABNF	WASHER, SEALING
6	672-XJKABNF	METERING CARTRIDGE, LESS PIN
7	667-402JKABNF	MVP FILTER
8	-----	BODY (NOT SOLD SEPARATELY)
9	748-012KJKABNF	FLOW CONTROL, KIT
10	319-040JKABNF	O-RING
11	-----	MOUTHGAURD
12	653-008JKABCP	NOZZLE
13	1001-002JKABNF	GASKET
14	1020-004JKABNF	FLOW CONTROL 0.74 GPM MAX
15	722-015KJKABRBF	ADAPTER, FLOW CONTROL 0.74GPM
16	748-013KJKNF	MOUNTING KIT
17	807-112JKNF	WASHER
18	49-004JKRBF	LOCKNUT
19	49-005JKRBF	COUPLING NUT