

CHICAGO FAUCETS
a Geberit company

2100 South Clearwater Drive
Des Plaines, IL 60018
Phone: 847-803-5000
Fax: 847-803-5454
www.chicagofaucets.com

REPAIR PARTS

FITTING NO.

540-LD897SWXFKCP

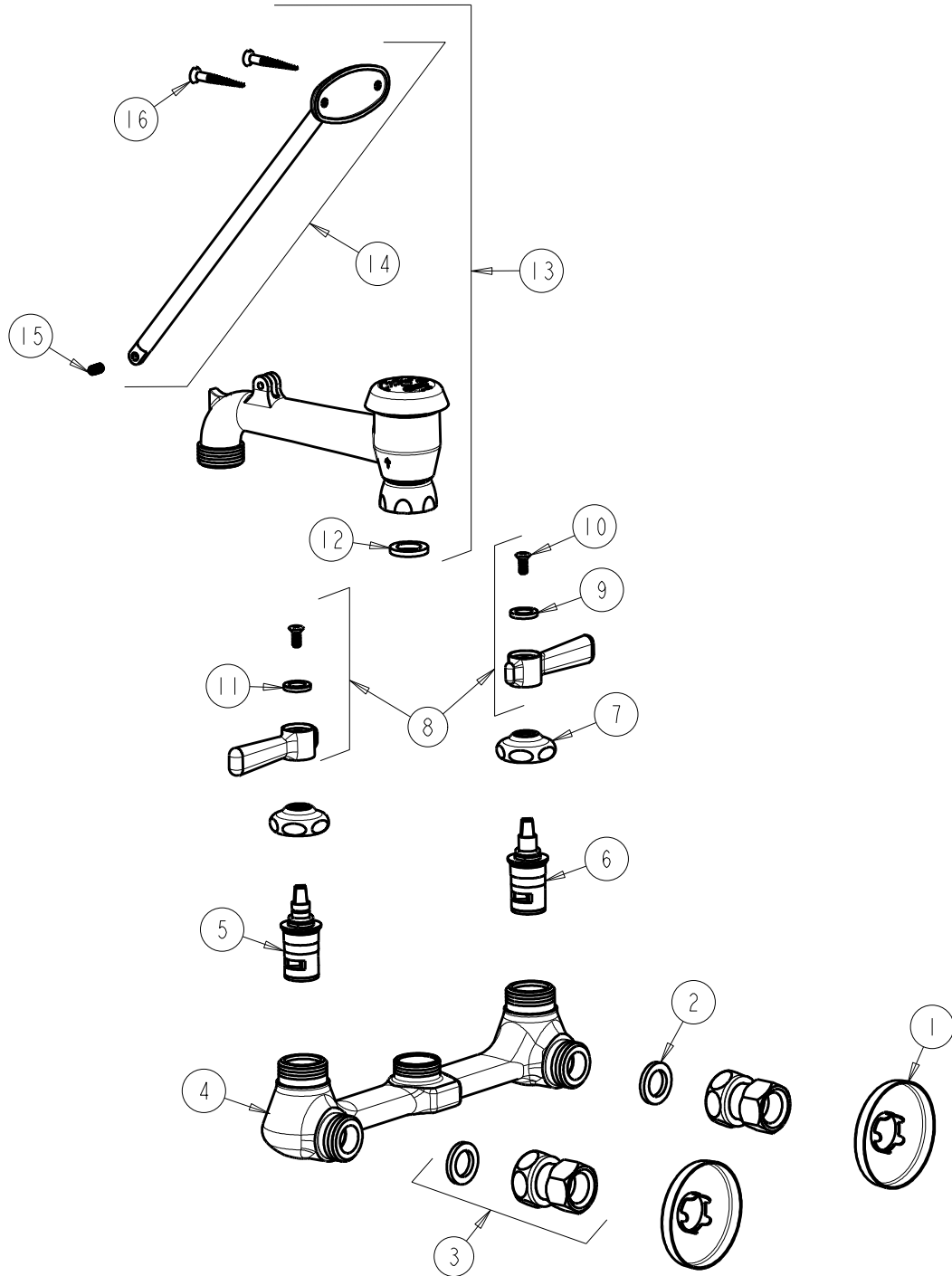
SUBMITTED MODEL NO.

BY: SID DATE: 10-05-11

CHK: *[Signature]* REV: 11-09-11

ITEM NO.

FOR TECHNICAL ASSISTANCE
1-800-TEC-TRUE (1-800-832-8783)



| ITEM | PART NO. | DESCRIPTION | ITEM | PART NO. | DESCRIPTION |
|------|-------------|----------------------------------|------|--------------|-------------------------|
| 1 | 749-016JKCP | FLANGE | 9 | 633-023JKNF | INDEX BUTTON (RED) |
| 2 | 1-011JKNF | WASHER, .97 X .62 X .12 | 10 | 420-010JKRCF | SCREW, 10-32 UNC PH 1/2 |
| 3 | WXFKCP | ADAPTER, FLANGE & WASHER ASSY. | 11 | 633-123JKNF | INDEX BUTTON (BLUE) |
| 4 | — | VALVE BODY (NOT SOLD SEPARATELY) | 12 | 340-004JKNF | CELCON WASHER |
| 5 | 1-099XKJKNF | RH CERAMIC CARTRIDGE | 13 | 897-SJKCP | VB SPOUT w/ BRACE ROD |
| 6 | 1-100XKJKNF | LH CERAMIC CARTRIDGE | 14 | 897-013JKCP | BRACE ROD ASSEMBLY |
| 7 | 1-214JKCP | CAP | 15 | 665-116JKNF | SET SCREW |
| 8 | 369-PRJKCP | LEVER HANDLE ASSEMBLY (PAIR) | 16 | 173-006JKCP | FLAT HEAD WOOD SCREW |