

**CHICAGO  
FAUCETS**

a Geberit company

**FOR TECHNICAL ASSISTANCE**  
1-800-TEC-TRUE (1-800-832-8783)

2100 South Clearwater Drive  
Des Plaines, IL 60018  
Phone: 847-803-5000  
Fax: 847-803-5454  
www.chicagofaucets.com

**REPAIR  
PARTS**

BY: SID DATE: 01-03-13

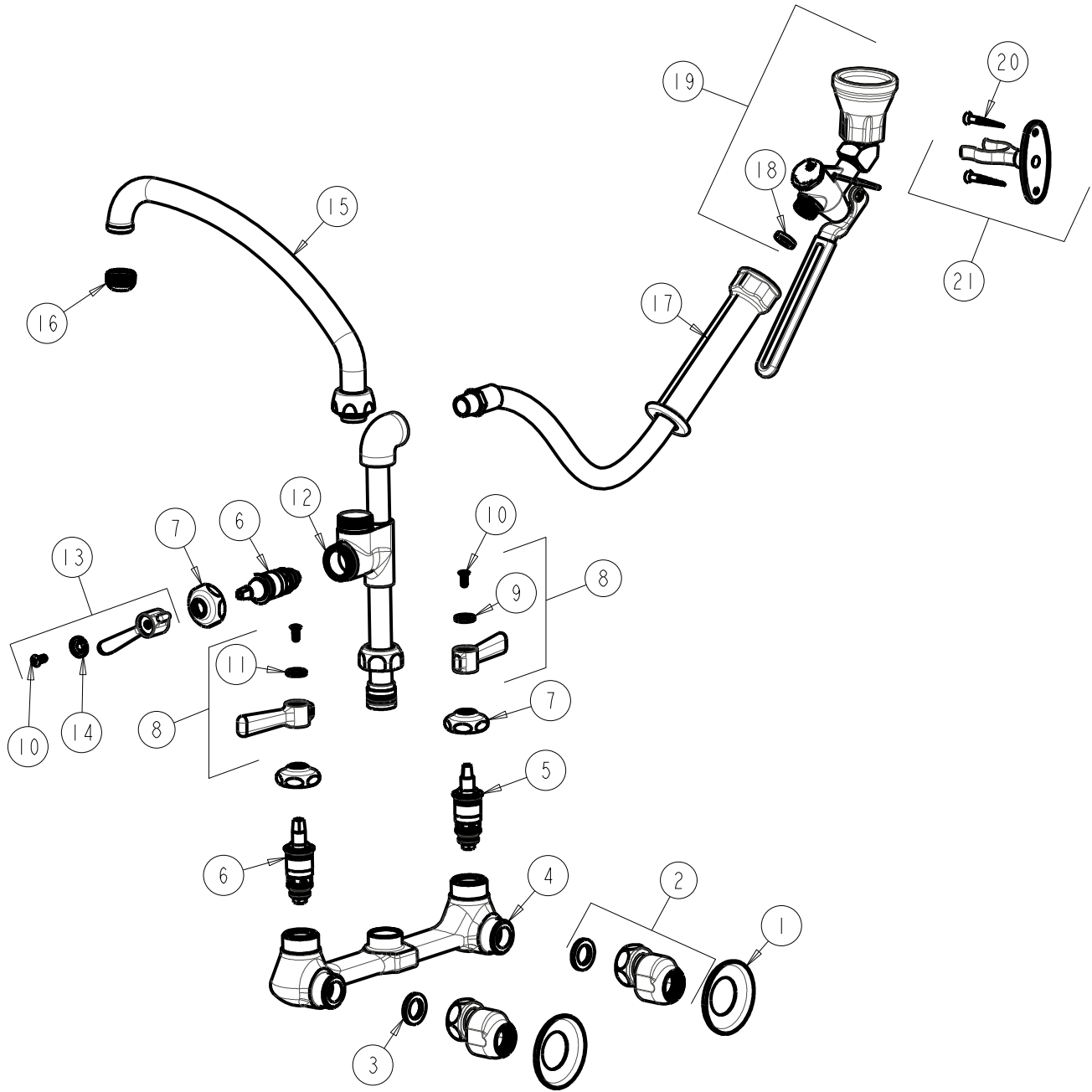
CHK: *[Signature]* REV:

FITTING NO.

**509-GCLABCP**

SUBMITTED MODEL NO.

ITEM NO.



ITEM	PART NO.	DESCRIPTION	ITEM	PART NO.	DESCRIPTION
1	1-055JKCP	FLANGE	12	-----	VALVE BODY (NOT SOLD SEPARATELY)
2	GCJKABCP	ARM ASSEMBLY 'GC' WITH WASHER	13	369-PLJKCP	PLAIN LEVER HANDLE
3	1-011JKNF	WASHER, .97 X .62 X .12	14	633-223JKNF	INDEX BUTTON (WHITE)
4	-----	VALVE BODY (NOT SOLD SEPARATELY)	15	L9LESSE3JKCP	SPOUT
5	1-100XTJKABNF	QUATURN CARTRIDGE (LH)	16	E1JKABRCF	QUIXTOP OUTLET
6	1-099XTJKABNF	QUATURN CARTRIDGE (RH)	17	83-58NF	HOSE & HANDLE 58"
7	1-214JKCP	CAP	18	919-243JKNF	GASKET, .685 X .375 X .125
8	369-PRJKCP	LEVER HANDLE ASSEMBLY (PAIR)	19	90-ANGABCP	PRE-RINSE ANGLE VALVE LOW FLOW
9	633-023JKNF	INDEX BUTTON (RED)	20	173-006JKCP	FLAT HEAD WOOD SCREW
10	420-010JKRCF	SCREW, 10-32 UNC PH 1/2	21	853-CP	WALL HOOK ASSEMBLY
11	633-123JKNF	INDEX BUTTON (BLUE)			