



a Geberit company

2100 South Clearwater Drive  
Des Plaines, IL 60018  
Phone: 847-803-5000  
Fax: 847-803-5454  
www.chicagofaucets.com

# REPAIR PARTS

BY: JAR DATE: 01-10-13

CHK: *[Signature]* REV:

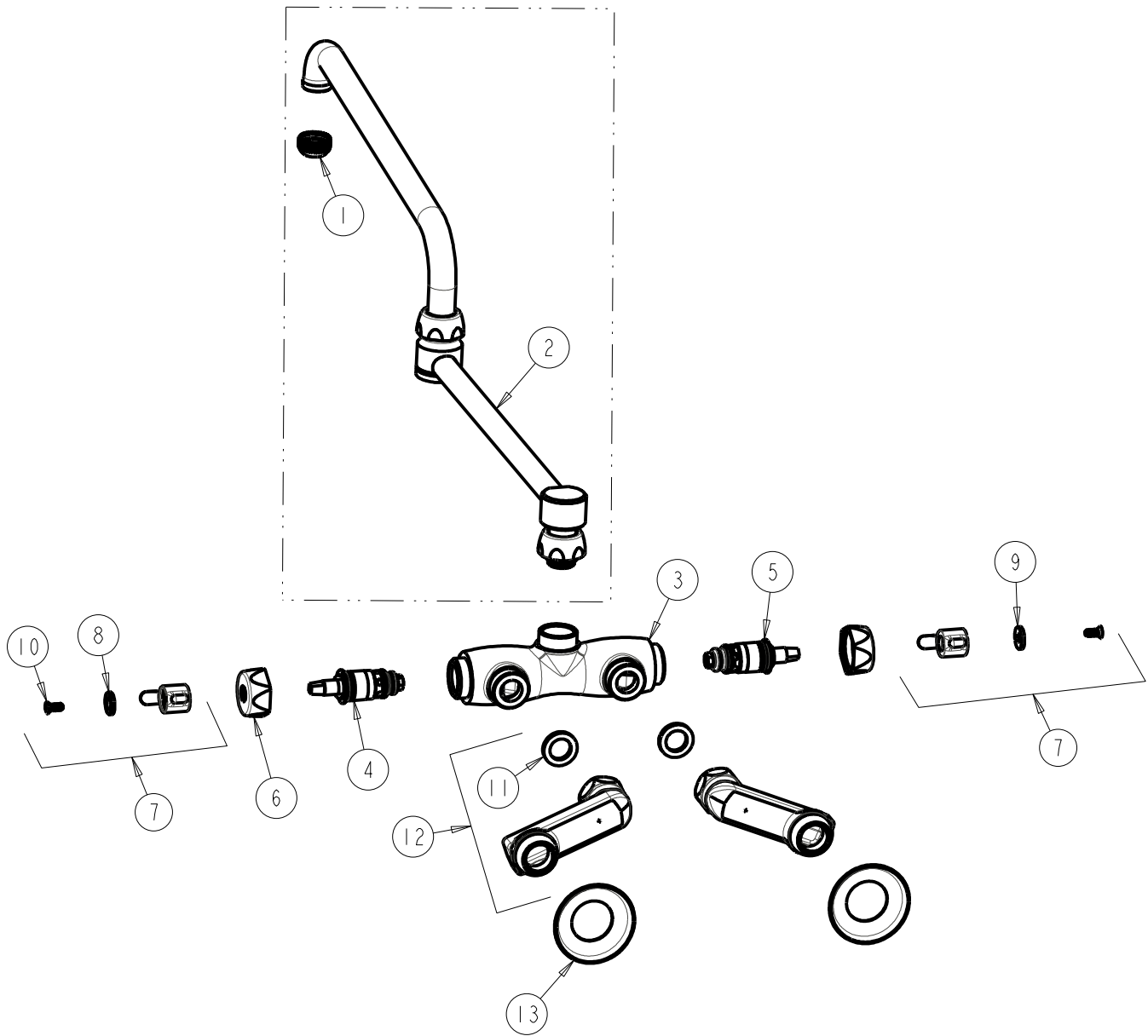
FITTING NO.

445-DJ24ABCP

SUBMITTED MODEL NO.

ITEM NO.

**FOR TECHNICAL ASSISTANCE**  
1-800-TEC-TRUE (1-800-832-8783)



ITEM	PART NO.	DESCRIPTION
1	E1JKABRCF	QUIXTOP OUTLET
2	DJ24JKABCP	SPOUT
3	-----	VALVE BODY (NOT SOLD SEPARATELY)
4	1-099XTJKABNF	QUATURN CARTRIDGE (RH)
5	1-100XTJKABNF	QUATURN CARTRIDGE (LH)
6	444-005JKCP	CAP
7	369-PRJKCP	LEVER HANDLE ASSEMBLY (PAIR)
8	633-123JKNF	INDEX BUTTON (BLUE)
9	633-023JKNF	INDEX BUTTON (RED)
10	420-010JKRCF	SCREW, 10-32 UNC PH 1/2
11	1-011JKNF	WASHER, .97 X .62 X .12
12	HJKABCP	ARM ASSEMBLY w/WASHER
13	1-055JKCP	FLANGE