

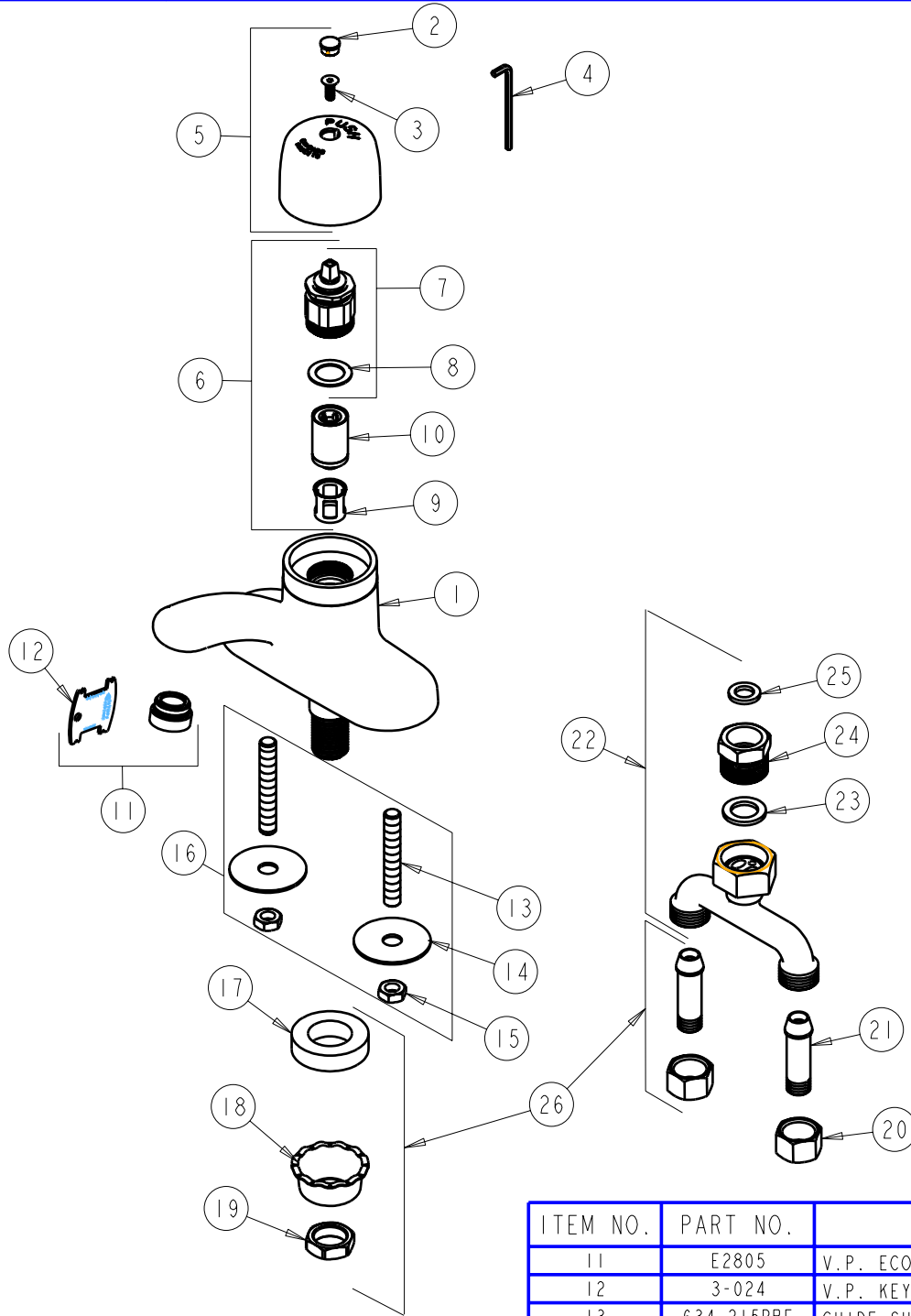
PARTS LIST

BY: JAR
CHK'D:



FINISH: AS SPECIFIED
DATE: 10-7-05

3400-TCP



ITEM NO.	PART NO.	DESCRIPTION
11	E2805	V.P. ECONO-FLO SPRAY OUTLET w/KEY
12	3-024	V.P. KEY
13	634-215RBF	GUIDE SHANK
14	634-124NF	STEEL WASHER
15	689-113RBF	LOCKNUT
16	126-PPNF	PRE-PACK
17	555-313	WASHER
18	1797-114	BASIN COCK WASHER
19	49-004	LOCKNUT
20	49-005	COUPLING NUT
21	58-018K	TAILPIECE
22	1-143K	TEE ASSEMBLY
23	1-143	SEAT WASHER
24	808-001	COUPLING
25	1001-002	GASKET
26	151-PPNF	PRE-PACK

ITEM NO.	PART NO.	DESCRIPTION
1	-----	BODY
2	2500-005CP	HANDLE BUTTON
3	420-020NF	SCREW, 1/8 FLAT HEX HEAD X 1/2
4	420-022NF	WRENCH, 1/8 HEX
5	3400-002CP	HANDLE KIT
6	3300-103KNF	ACTUATOR & CARTRIDGE KIT
7	3300-003KNF	ACTUATOR ASSEMBLY
8	3300-006NF	WASHER
9	667-402	FILTER
10	671-XNNF	METERING VALVE CARTRIDGE
(3300-006NF REQUIRED - SOLD SEPARATELY)		