



2100 South Clearwater Drive
Des Plaines, IL 60018
Phone: 847-803-5000
Fax: 847-803-5454
www.chicagofaucets.com

REPAIR PARTS

FITTING NO.

2305-VB613AABCP

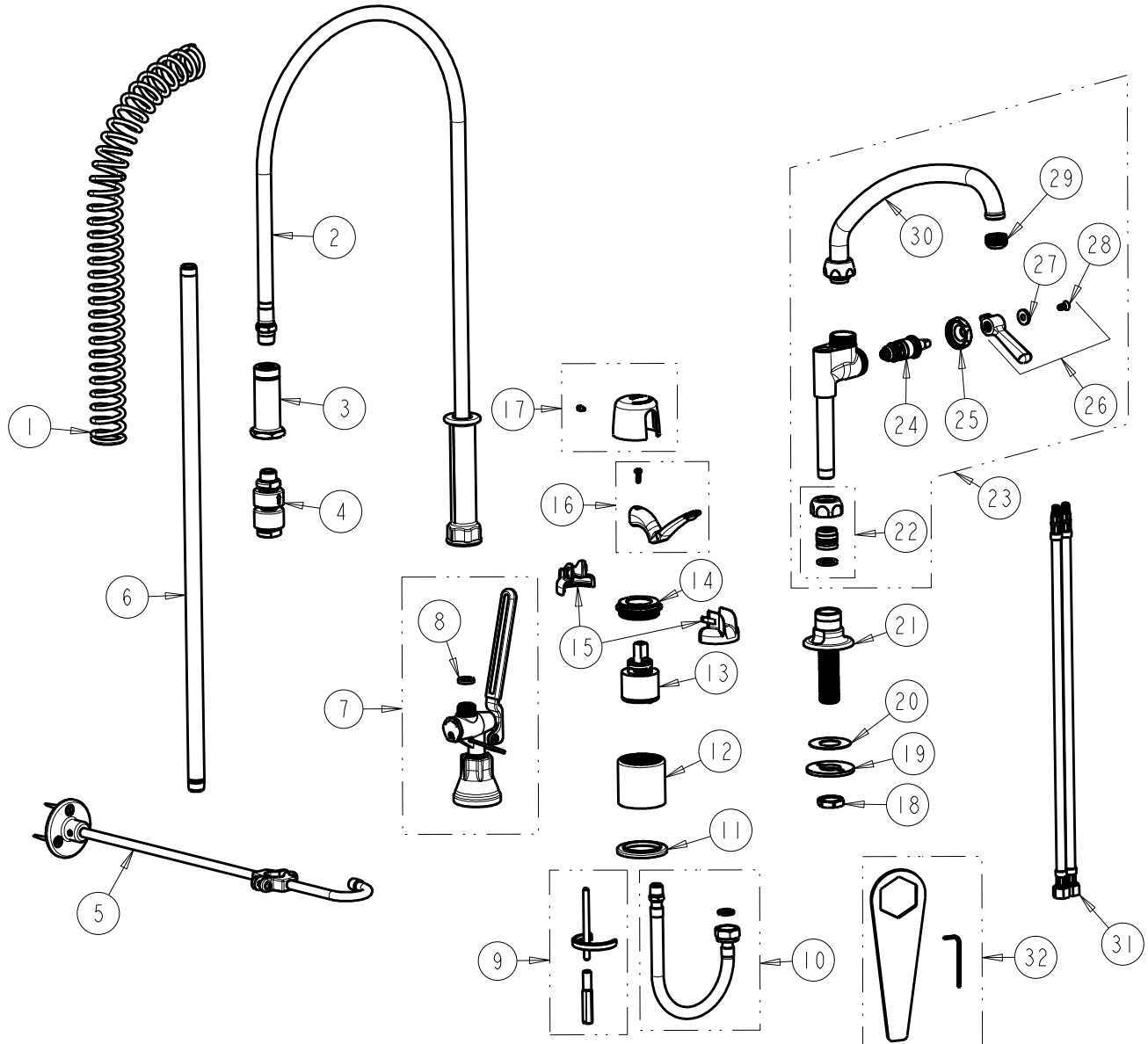
SUBMITTED MODEL NO.

ITEM NO.

BY: JAR DATE: 01-23-13

CHK: *[Signature]* REV: 10-29-14

FOR TECHNICAL ASSISTANCE
1-800-TEC-TRUE (1-800-832-8783)



ITEM	PART NO.	DESCRIPTION	ITEM	PART NO.	DESCRIPTION
1	919-014JKCP	SPRING	17	2200-122KJKCP	CAP AND SCREW ASSEMBLY
2	83-44ABNF	44" HOSE AND HANDLE ASSEMBLY	18	49-004JKRBF	LOCKNUT
3	919-038JKABCP	GUIDE SHANK	19	807-112JKNF	WASHER
4	E23JKABCP	BACK-FLOW PREVENTER	20	333-103JKNF	RUBBER WASHER
5	902-MHJKCP	PIPE STRAP AND HOOK ASSEMBLY	21	-----	SHANK AND FLANGE ASSEMBLY
6	919-039JKABCP	3/8" NPT X 23" RISER	22	143-PPJKABNF	PRE-PACK
7	90-LABCP	PRE-RINSE VALVE, LOW FLOW	23	613-AABCP	PRE-RINSE ADAPTA FITTING
8	919-243JKABNF	GASKET, .685 X .375 X .125	24	1-099XTJKABNF	QUATURN CARTRIDGE (RH)
9	2200-015KJKNF	HOLDDOWN KIT	25	1-214JKCP	CAP
10	250-006KJKABNF	HOSE WITH FIBER WASHER	26	369-PLJKCP	PLAIN LEVER HANDLE
11	2300-014JKCP	FLANGE, BODY	27	633-223JKNF	INDEX BUTTON (WHITE)
12	-----	BODY (NOT SOLD SEPARATELY)	28	420-020JKNF	SCREW, 1/8 FLAT HEX HEAD X 1/2
13	2300-XJKABNF	40 mm SINGLE LEVER CARTRIDGE	29	E1JKABRCF	OUTLET, QUIXTOP
14	2200-116JKRCF	NUT, HOLDDOWN	30	L9LEQJKAB	SPOUT, 9-1/2 C-C
15	2200-021KJKNF	CARTRIDGE SPIN CAP ASSEMBLY	31	250-025KJKABNF	HOSE, SS BRAIDED 5/16-24 X 3/8
16	2200-225KJKCP	LEVER HANDLE, 2-3/4"	32	2200-002KJKNF	WRENCH & HEX KEY