

CHICAGO FAUCETS
a Geberit company

2100 South Clearwater Drive
Des Plaines, IL 60018
Phone: 847-803-5000
Fax: 847-803-5454
www.chicagofaucets.com

REPAIR PARTS

FITTING NO.

201-AHA8-319CP

SUBMITTED MODEL NO.

BY: SID

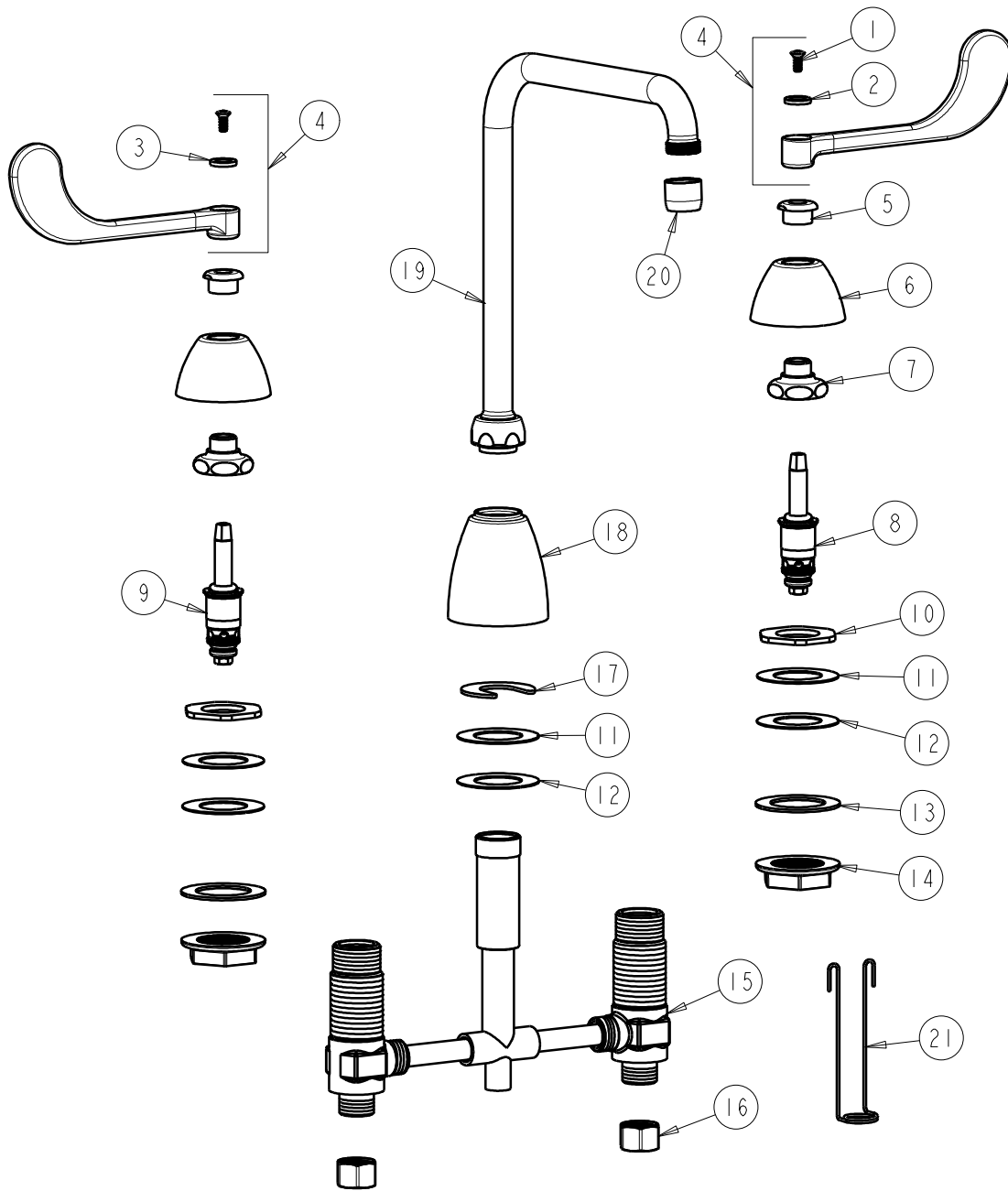
DATE: 07-07-09

CHK: *[Signature]*

REV: 06-10-10

ITEM NO.

FOR TECHNICAL ASSISTANCE
1-800-TEC-TRUE (1-800-832-8783)



| ITEM | PART NO. | DESCRIPTION | ITEM | PART NO. | DESCRIPTION |
|------|--------------|--------------------------|------|-------------|----------------------------------|
| 1 | 420-010JKRCF | SCREW, 10-32 UNC PH 1/2 | 12 | 739-056JKNF | RUBBER WASHER |
| 2 | 633-123JKNF | INDEX BUTTON (BLUE) | 13 | 55-010JKNF | STEEL WASHER |
| 3 | 633-023JKNF | INDEX BUTTON (RED) | 14 | 250-004JKNF | LOCKNUT |
| 4 | 319-PRJKCP | WRISTBLADE HANDLE (PAIR) | 15 | — | VALVE BODY (NOT SOLD SEPARATELY) |
| 5 | 422-113JKCP | ESCUTCHEON NUT | 16 | 49-005JKRBF | COUPLING NUT |
| 6 | 250-080JKCP | ESCUTCHEON | 17 | 200-006JKNF | C-WASHER |
| 7 | 274-004JKRBF | CAP NUT | 18 | 890-259JKCP | SPOUT ESCUTCHEON |
| 8 | 377-XTRHJKNF | RH QUATURN CARTRIDGE | 19 | HA8AJKCP | HIGH ARCH SWING SPOUT |
| 9 | 377-XTLHJKNF | LH QUATURN CARTRIDGE | 20 | E3JKCP | SOFTFLO AERATOR OUTLET |
| 10 | 308-003JKRBF | LOCKNUT | 21 | 200-007JKNF | HANGER |
| 11 | 888-006JKRBF | BRASS WASHER | | | |