

CHICAGO FAUCETS
a Geberit company

2100 South Clearwater Drive
Des Plaines, IL 60018
Phone: 847-803-5000
Fax: 847-803-5454
www.chicagofaucets.com

REPAIR PARTS

FITTING NO.

1100-HA8-369VPACP

SUBMITTED MODEL NO.

BY: JAR

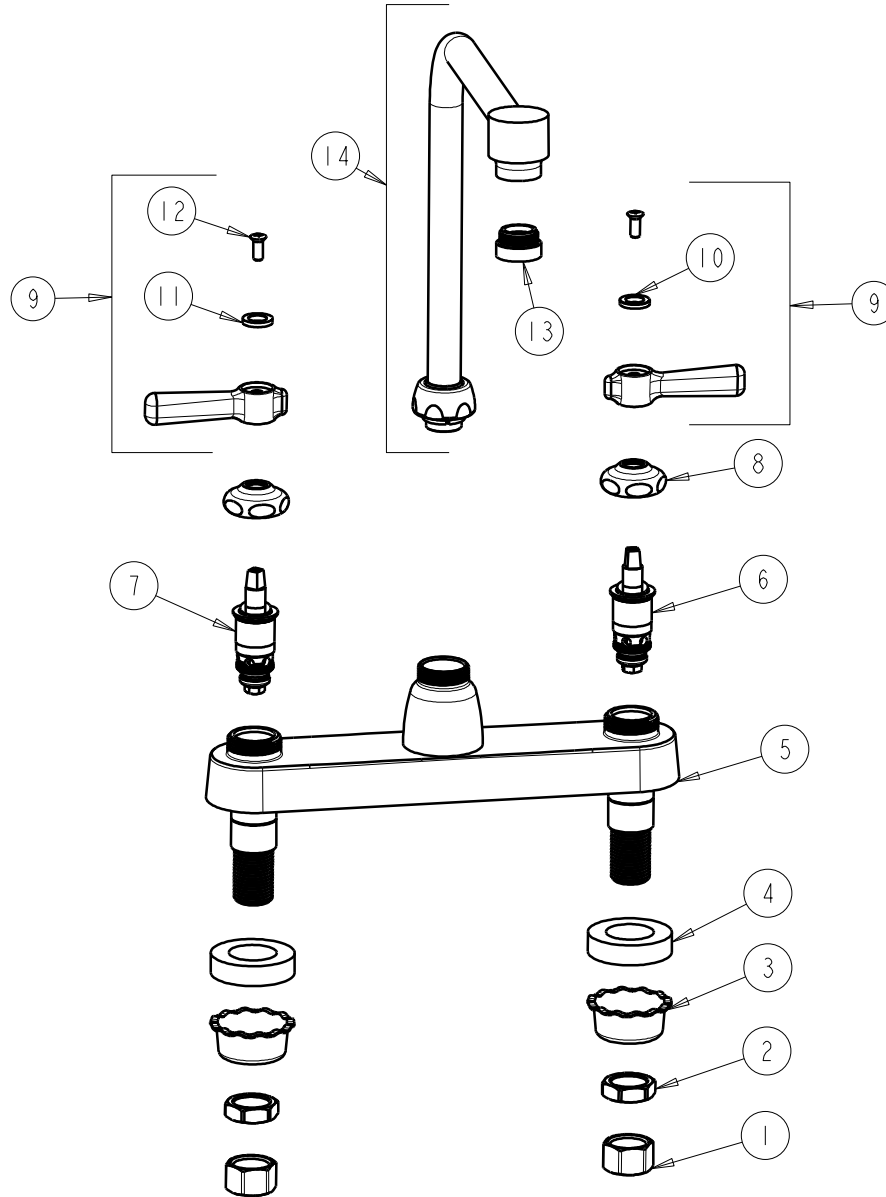
DATE: 03-10-09

CHK: *[Signature]*

REV:

ITEM NO.

FOR TECHNICAL ASSISTANCE
1-800-TEC-TRUE (1-800-832-8783)



ITEM	PART NO.	DESCRIPTION	ITEM	PART NO.	DESCRIPTION
1	49-005JKRBF	COUPLING NUT	8	1-214JKCP	CAP
2	49-004JKRBF	LOCKNUT	9	369-PRJKCP	LEVER HANDLE ASSEMBLY (PAIR)
3	1797-114JKNF	BASIN COCK WASHER	10	633-123JKNF	INDEX BUTTON (BLUE)
4	555-313JKNF	WASHER	11	633-023JKNF	INDEX BUTTON (RED)
5	—	VALVE BODY (NOT SOLD SEPARATELY)	12	420-010JKRCF	SCREW, 10-32 UNC PH 1/2
6	1-099XTJKNF	QUATURN UNIT (RH)	13	E12VPJKCP	V.R. SOFTFLO AERATOR W/ KEY
7	1-100XTJKNF	QUATURN UNIT (LH)	14	HA8VPAJKCP	FOR PARTS SEE HA8VPAJKCP