

**CHICAGO FAUCETS** 

a Geberit company

2100 South Clearwater Drive  
Des Plaines, IL 60018  
Phone: 847-803-5000  
Fax: 847-803-5454  
www.chicagofaucets.com

# REPAIR PARTS

BY: SID DATE: 02-26-09

CHK:  REV:

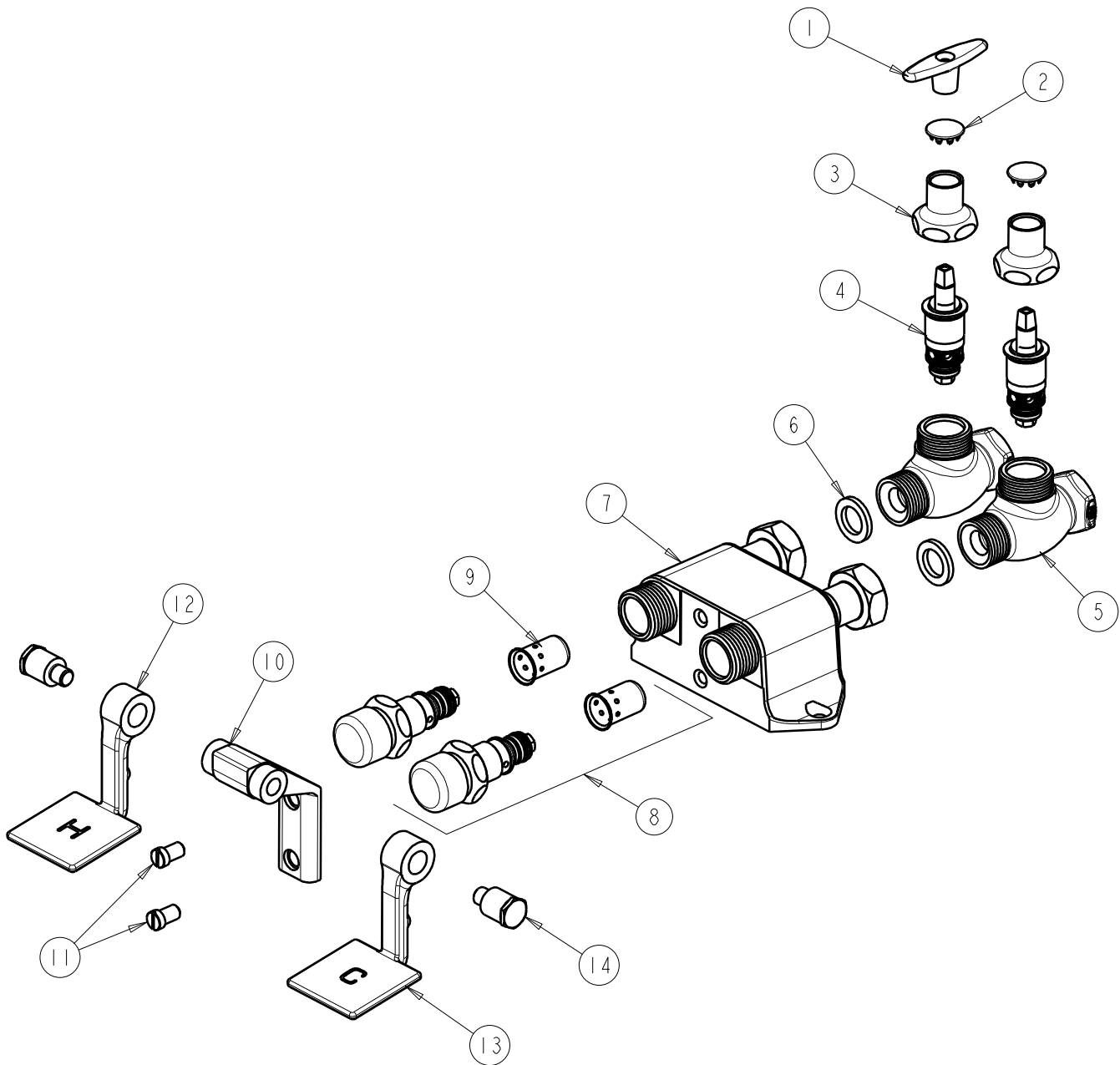
FITTING NO.

**625-699CP**

SUBMITTED MODEL NO.

ITEM NO.

**FOR TECHNICAL ASSISTANCE**  
**1-800-TEC-TRUE (1-800-832-8783)**



ITEM	PART NO.	DESCRIPTION	ITEM	PART NO.	DESCRIPTION
1	293-006JKRCF	HANDLE, TEE INCLUDES SCREW	8	628-XJKNF	FOR PARTS SEE 628X
2	1-144JKCP	BUTTON	9	333-075JKNF	DASHPOT
3	1-246JKCP	NUT, CAP LOOSE KEY 1-1/8-18 UNEF	10	625-060JKCP	BRACKET
4	217-XTLHJKNF	CARTRIDGE, SLO-COMPRESSION	11	625-006JKBNF	SCREW, PAN HEAD 5/16-18 UNC
5	---	BODY (NOT SOLD SEPARATELY)	12	625-058JKNF	PEDAL, HOT
6	1-011JKNF	WASHER, .97 X .62 X .12	13	625-158JKNF	PEDAL, COLD
7	---	VALVE BODY (NOT SOLD SEPARATELY)	14	625-061JKRCF	BOLT, SHOULDER 3/8-24 UNF X 5/8 HEX