

Pressure Assist Toilet System

Product Specifications



Concealed tank & carrier - **111.817.00.1**

Wall-hung toilet bowl - **111.875.DY.1**

Polished chrome actuator - **115.762.21.1**

Matte chrome actuator - **115.762.46.1**

■ GEBERIT®

Advanced plumbing technology

Model 111.817.00.1
Model 111.875.DY.1
Model 115.762.21.1
Model 115.762.46.1

Product Specifications

Flushometer pressure vessel in-wall tank & carrier system with wall-hung 4-bolt elongated white toilet bowl and die-cast actuator plate.

Tank & carrier system shall fit within standard 2 x 6 wall studs placed 16" (40.6 cm) on center; water supply shall be minimum 1/2" (1.3 cm) nominal diameter supplying a minimum of 35 psi (2.4 bar) water pressure; the bowl shall be made to ASME A112.19.2 fixture standards and be mounted to the carrier system with 4 bolts of 1/2" - 13 thread size. The carrier shall have adjustable height ranging from 15" (38.1 cm) rim height to 19" (48.3 cm) rim height. The unit shall flush on 1.6 gallons (6 liters) per national codes. Actuator panels shall be die-cast zinc and plated to preserve material integrity.

Warranty

Five years - on pressure vessel;
 Limited Lifetime on steel carrier system;
 One year on toilet bowl,
 One year on flush actuator panel (s).

Options

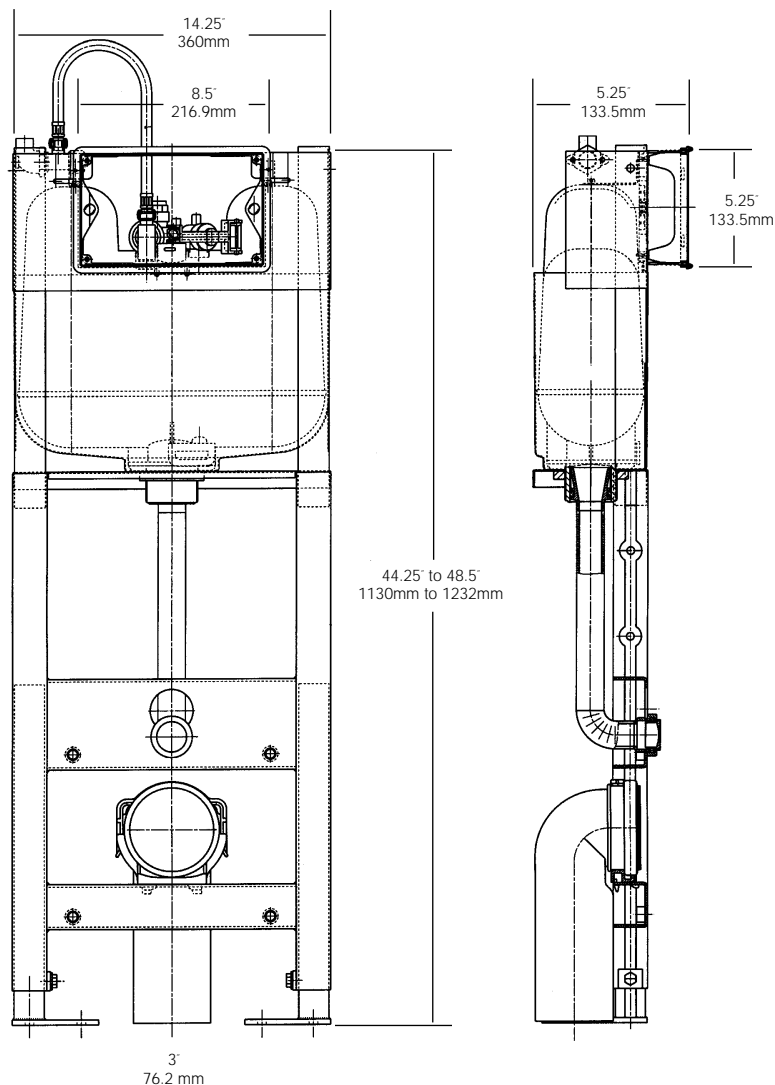
Polished chrome actuator plate (115.762.21.1)
 Matte chrome actuator plate (115.762.46.1)
 Elbows - 45° right or left discharge
 Back to back discharge fitting
 Cast-iron 90° elbow

Features

- PF2® in-wall pressure vessel
- Steel, powder-coated carrier
- Die-cast actuator measures:
 - 9-5/8" wide x 6-1/2" high
 - 24.5 cm wide x 16.5 cm high
- Carrier installs in 2 x 6 wall studs - 16" CC
- 3" discharge 90° elbow (7.62 cm)
- Bowl trap size - 2-1/4" (5.7 cm)
- Carrier height adjustment range
 - 15" rim height to 19" rim height (38.1 to 48.3 cm)
- Wall-hung bowl provides easy sanitation of surrounding areas
- Flush volume - 1.6 GPF (6 LPF)
- 10" x 12" water spot (30.5 cm x 25.4 cm)
- Five-year limited warranty on pressure vessel
- Limited Lifetime warranty steel carrier system
- One-year limited warranty on toilet bowl
- One-year limited warranty on actuator (s)

Compliance

- ASSE 1037
- ASME 112.6.2
- ASSE 112.19.2
- CSA - B125



GEBERIT®

Advanced plumbing technology

Geberit Manufacturing, Inc.

1100 Boone Dr., Michigan City, IN 46360 USA

U.S.: Phone: 219.879.4466 • Toll-free: 800.225.7217 • Fax: 219.872.8003

Canada: Toll-free: 866.748.4646 • Fax: 514.648.8509

www.us.geberit.com